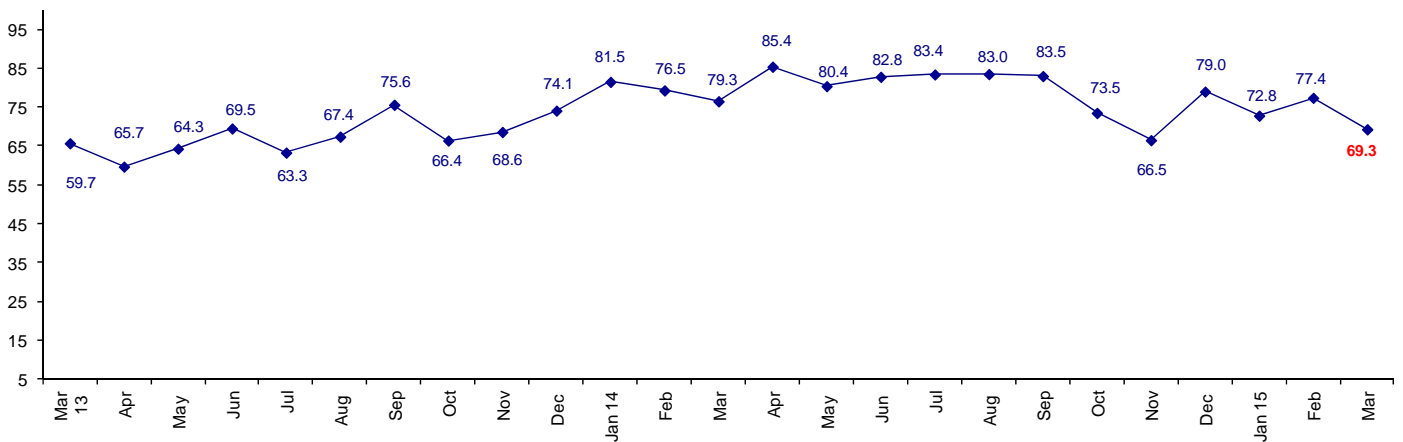


## Confidence Weakens in March But Still Positive

The March Connector Confidence Index is 69.3 down from February at 77.4.

### World Connector Confidence Index (WCCI) >50.0 = Positive



The **World Connector Confidence Index (WCCI)** is the average of all responses for “present situation,” and “future expectations.”

## Present Business Expectations

Industry personnel were asked, "What is your appraisal of current business conditions (positive, negative, neutral)?"

### Present Situation Index

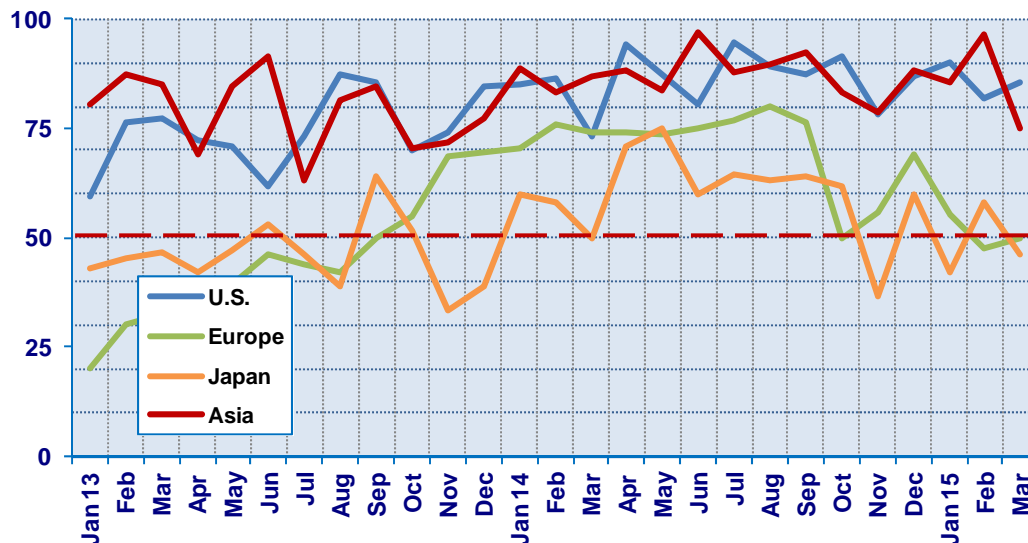
Region	2014					2015			Confidence/ Trend
	Aug	Sep	Oct	Nov	Dec	Jan	Feb	Mar	
North America	89.3	87.5	91.7	78.3	87.1	90.9	81.8	85.7	Positive - Up
Europe	80.0	76.2	50.0	55.6	69.0	55.3	47.8	50.0	Neutral - Up
Japan	63.2	64.0	61.9	36.8	60.0	42.1	58.1	46.2	Negative - Down
Asia	89.7	92.3	83.3	78.9	88.5	85.7	96.6	75.0	Positive - Down
<b>World</b>	<b>82.1</b>	<b>81.5</b>	<b>73.6</b>	<b>62.5</b>	<b>78.2</b>	<b>70.3</b>	<b>72.4</b>	<b>66.7</b>	<b>Positive - Down</b>

Confidence                      Pos    Pos    Pos    Pos    Pos    Pos    Pos    Pos  
Trend                                Up    Down Down    UP    Down    Up    Down

Japan is again negative about present business conditions. North America is the only region that is positive and up.

### Present Situation Index

>50.0 = Positive



## Future Expectations

Industry personnel were asked, "What is your expectation of future business conditions six months from now (positive, negative, or neutral)?"

### Future Expectations Index

Region	2014					2015			Confidence/ Trend
	Aug	Sep	Oct	Nov	Dec	Jan	Feb	Mar	
North America	90.0	88.6	86.5	83.3	90.6	88.9	83.3	86.4	Positive - Up
Europe	84.6	81.6	56.4	66.7	69.0	64.9	65.2	57.1	Positive - Down
Japan	68.2	69.0	62.5	36.8	50.0	61.1	73.5	58.8	Positive - Down
Asia	92.9	94.6	85.7	94.4	89.3	80.0	100.0	80.0	Positive - Down
<b>World</b>	<b>84.9</b>	<b>84.5</b>	<b>73.3</b>	<b>70.3</b>	<b>79.9</b>	<b>75.2</b>	<b>81.9</b>	<b>71.8</b>	<b>Positive - Down</b>
Confidence		Pos	Pos	Pos	Pos	Pos	Pos	Pos	
Trend		Down	Down	Down	Up	Down	Up	Down	

All regions are positive about future business conditions. North America is the only region positive and up.

### Future Expectations Index

(>50.0 = Positive)

