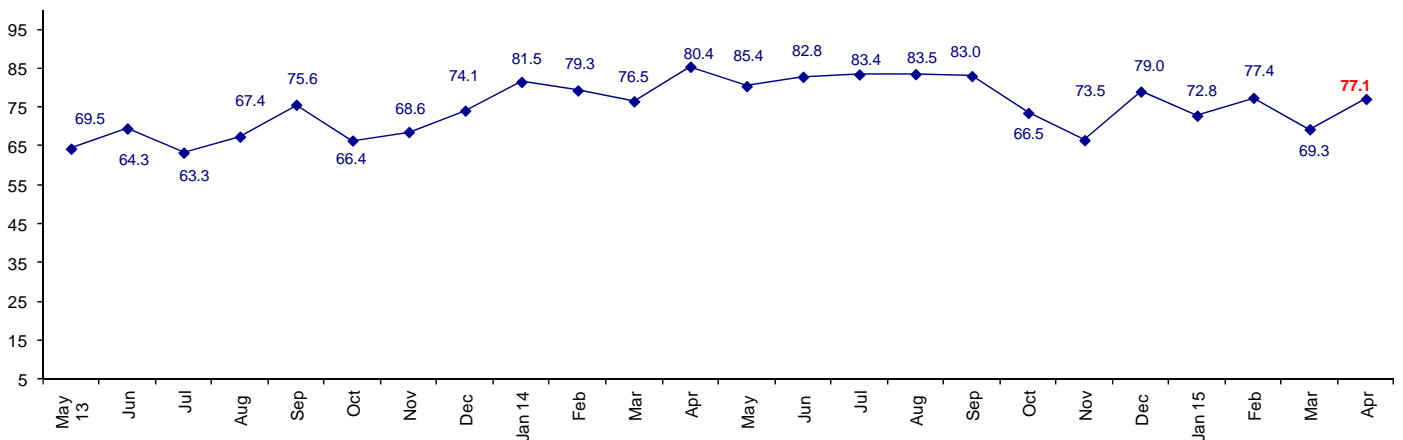


Connector Confidence Increases in April

The April Connector Confidence Index is 77.1 up from March at 69.3.

World Connector Confidence Index (WCCI) >50.0 = Positive



The **World Connector Confidence Index (WCCI)** is the average of all responses for “present situation,” and “future expectations.”

Present Business Expectations

Industry personnel were asked, "What is your appraisal of current business conditions (positive, negative, neutral)?"

Present Situation Index

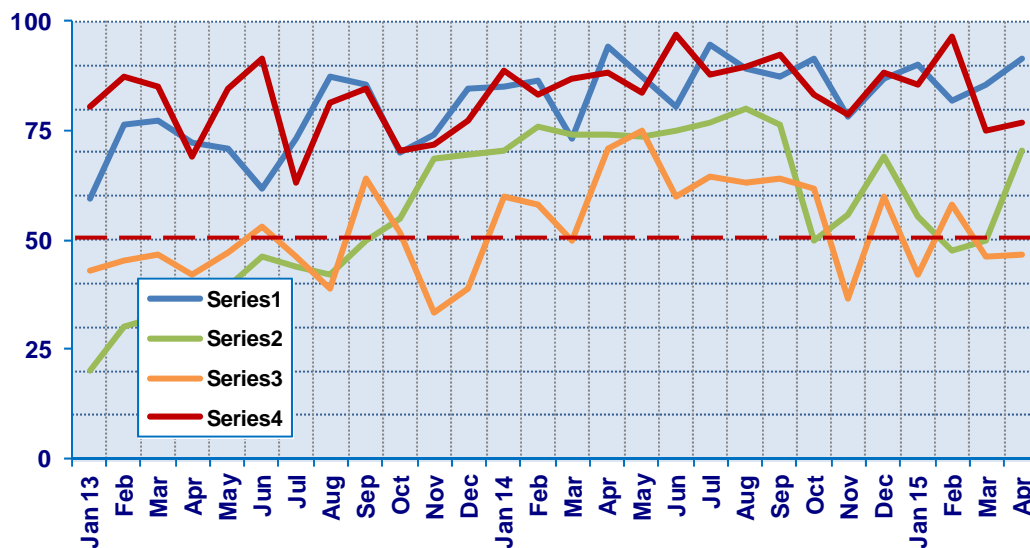
Region	2014				2015				Confidence/ Trend
	Sep	Oct	Nov	Dec	Jan	Feb	Mar	Apr	
North America	87.5	91.7	78.3	87.1	90.9	81.8	85.7	91.7	Positive - Up
Europe	76.2	50.0	55.6	69.0	55.3	47.8	50.0	70.4	Positive - Up
Japan	64.0	61.9	36.8	60.0	42.1	58.1	46.2	46.7	Negative - Up
Asia	92.3	83.3	78.9	88.5	85.7	96.6	75.0	76.9	Positive - Up
World	81.5	73.6	62.5	78.2	70.3	72.4	66.7	73.9	Positive - Up

Confidence Pos Pos Pos Pos Pos Pos Pos Pos
Trend Down Down UP Down Up Down Up

Japan is again negative about present business conditions. All other regions are positive and up.

Present Situation Index

>50.0 = Positive



Future Expectations

Industry personnel were asked, "What is your expectation of future business conditions six months from now (positive, negative, or neutral)?"

Future Expectations Index

Region	2014				2015				Confidence/ Trend
	Sep	Oct	Nov	Dec	Jan	Feb	Mar	Apr	
North America	88.6	86.5	83.3	90.6	88.9	83.3	86.4	92.6	Positive - Up
Europe	81.6	56.4	66.7	69.0	64.9	65.2	57.1	83.3	Positive - Up
Japan	69.0	62.5	36.8	50.0	61.1	73.5	58.8	56.3	Positive - Down
Asia	94.6	85.7	94.4	89.3	80.0	100.0	80.0	77.8	Positive - Down
World	84.5	73.3	70.3	79.9	75.2	81.9	71.8	80.0	Positive - Up
Confidence		Pos	Pos	Pos	Pos	Pos	Pos	Pos	
Trend		Down	Down	Up	Down	Up	Down	Up	

All regions are positive about future business conditions. North America and Europe are positive and up, significantly.

Future Expectations Index (>50.0 = Positive)

