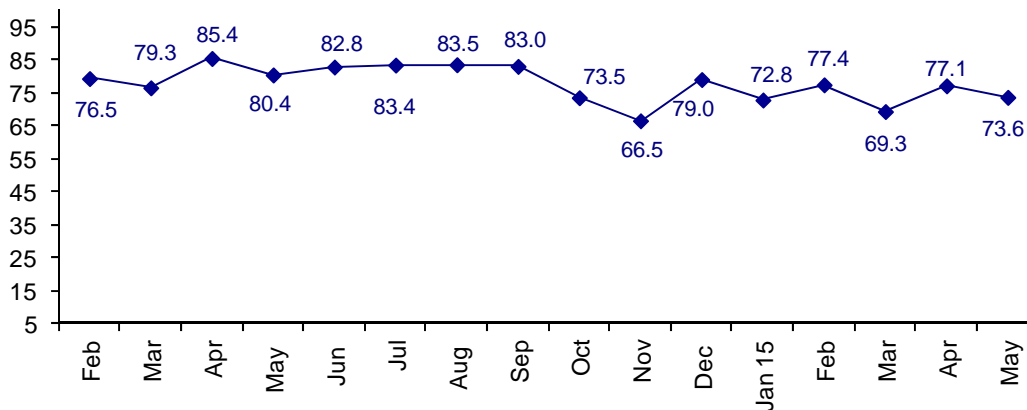


Connector Confidence Remains in Positive Territory

The May Connector Confidence Index is 73.6 down from April at 77.1, but up from March at 69.3.

World Connector Confidence Index (WCCI)
>50.0 = Positive



The **World Connector Confidence Index (WCCI)** is the average of all responses for “present situation,” and “future expectations.”

Present Business Expectations

Industry personnel were asked, "What is your appraisal of current business conditions (positive, negative, neutral)?"

Present Situation Index

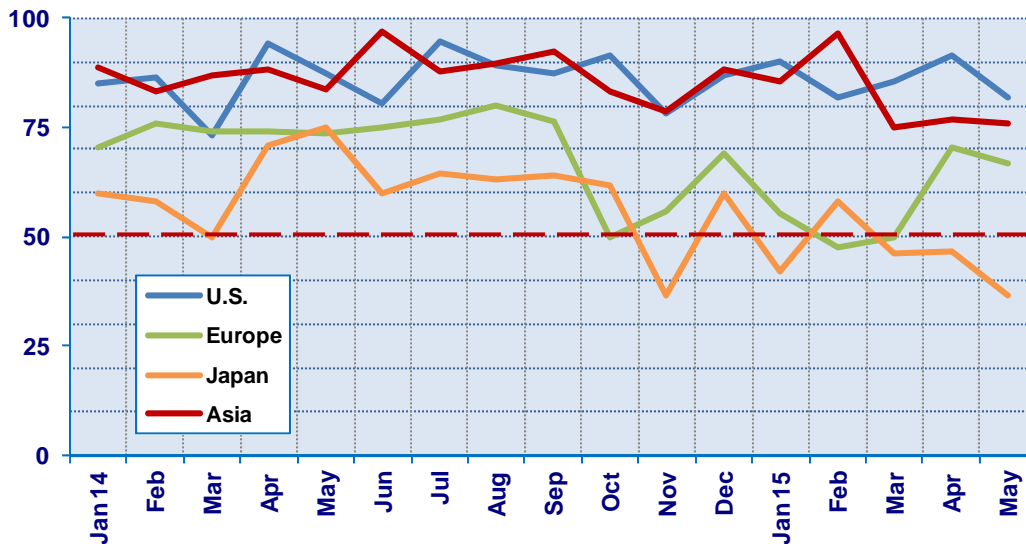
Region	2014			2015					Confidence/ Trend
	Oct	Nov	Dec	Jan	Feb	Mar	Apr	May	
North America	91.7	78.3	87.1	90.9	81.8	85.7	91.7	82.1	Positive - Down
Europe	50.0	55.6	69.0	55.3	47.8	50.0	70.4	66.7	Positive - Down
Japan	61.9	36.8	60.0	42.1	58.1	46.2	46.7	36.4	Negative - Down
Asia	83.3	78.9	88.5	85.7	96.6	75.0	76.9	76.0	Positive - Down
World	73.6	62.5	78.2	70.3	72.4	66.7	73.9	70.6	Positive - Down

Confidence Pos Pos Pos Pos Pos Pos Pos Pos
Trend Down UP Down Up Down Up Down

The overall industry remains confident in business conditions at 70.6, but Japan is negative for the third consecutive month.

Present Situation Index

>50.0 = Positive



Future Expectations

Industry personnel were asked, "What is your expectation of future business conditions six months from now (positive, negative, or neutral)?"

Future Expectations Index

Region	2014			2015					Confidence/ Trend
	Oct	Nov	Dec	Jan	Feb	Mar	Apr	May	
North America	86.5	83.3	90.6	88.9	83.3	86.4	92.6	82.8	Positive - Down
Europe	56.4	66.7	69.0	64.9	65.2	57.1	83.3	70.8	Positive - Down
Japan	62.5	36.8	50.0	61.1	73.5	58.8	56.3	50.0	Neutral - Down
Asia	85.7	94.4	89.3	80.0	100.0	80.0	77.8	87.5	Positive - Up
World	73.3	70.3	79.9	75.2	81.9	71.8	80.0	76.4	Positive - Down
Confidence		Pos	Pos	Pos	Pos	Pos	Pos	Pos	
Trend		Down	Up	Down	Up	Down	Up	Down	

Three of the four regions are positive about future business conditions. Japan is neutral. Asia is the only region in which confidence increased.

Future Expectations Index (>50.0 = Positive)

