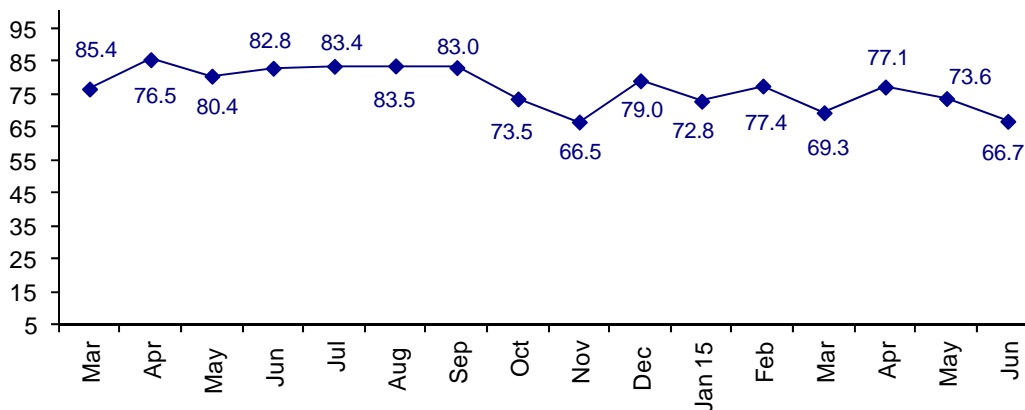


Confidence Drops as Connector Demand Slows Down

The June Connector Confidence Index is 66.7 down from May at 73.6.

World Connector Confidence Index (WCCI)
>50.0 = Positive



The **World Connector Confidence Index (WCCI)** is the average of all responses for “present situation,” and “future expectations.”

Present Business Expectations

Industry personnel were asked, "What is your appraisal of current business conditions (positive, negative, neutral)?"

Present Situation Index

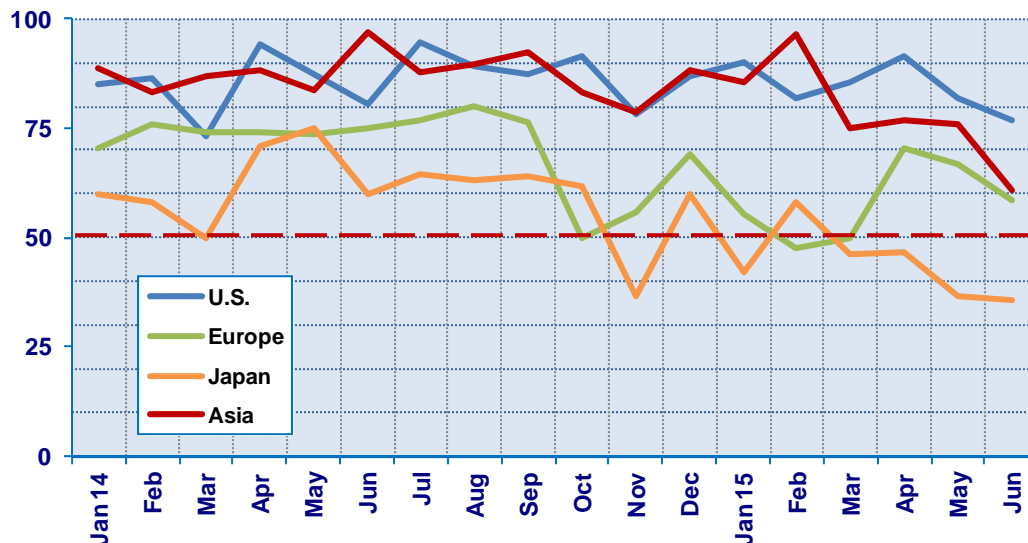
Region	2014			2015						Confidence/ Trend
	Oct	Nov	Dec	Jan	Feb	Mar	Apr	May	Jun	
North America	91.7	78.3	87.1	90.9	81.8	85.7	91.7	82.1	76.9	Positive - Down
Europe	50.0	55.6	69.0	55.3	47.8	50.0	70.4	66.7	58.6	Positive - Down
Japan	61.9	36.8	60.0	42.1	58.1	46.2	46.7	36.4	35.7	Negative - Down
Asia	83.3	78.9	88.5	85.7	96.6	75.0	76.9	76.0	60.7	Positive - Down
World	73.6	62.5	78.2	70.3	72.4	66.7	73.9	70.6	60.8	Positive - Down

Confidence Pos Pos Pos Pos Pos Pos Pos Pos
Trend Down UP Down Up Down Up Down Down

All regions have dropped in confidence; Japan is the only region that is negative.

Present Situation Index

>50.0 = Positive



Future Expectations

Industry personnel were asked, "What is your expectation of future business conditions six months from now (positive, negative, or neutral)?"

Future Expectations Index

Region	2014			2015						Confidence/ Trend
	Oct	Nov	Dec	Jan	Feb	Mar	Apr	May	Jun	
North America	86.5	83.3	90.6	88.9	83.3	86.4	92.6	82.8	86.2	Positive - Up
Europe	56.4	66.7	69.0	64.9	65.2	57.1	83.3	70.8	66.7	Positive - Down
Japan	62.5	36.8	50.0	61.1	73.5	58.8	56.3	50.0	53.8	Positive - Up
Asia	85.7	94.4	89.3	80.0	100.0	80.0	77.8	87.5	73.1	Positive - Down
World	73.3	70.3	79.9	75.2	81.9	71.8	80.0	76.4	72.4	Positive - Down
Confidence		Pos	Pos	Pos	Pos	Pos	Pos	Pos	Pos	
Trend		Down	Up	Down	Up	Down	Up	Down	Down	

All regions are positive about Future Business conditions. North America and Japan are positive and up.

Future Expectations Index

(>50.0 = Positive)

