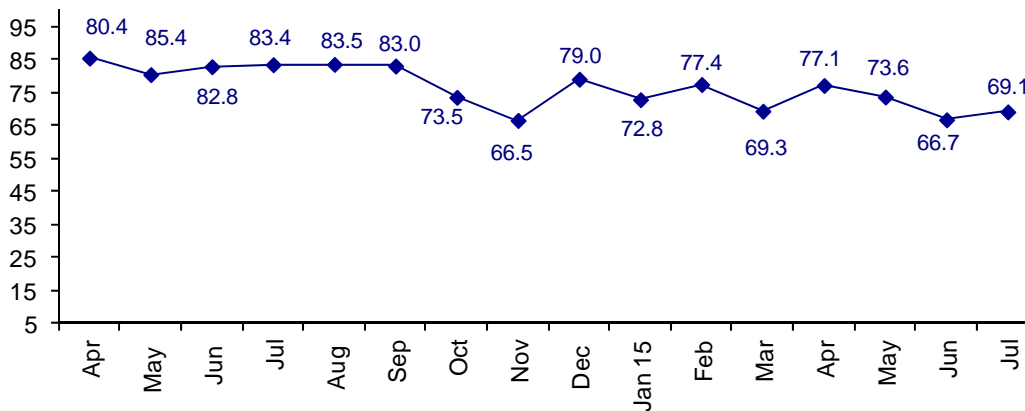


## Confidence Stays Positive In July

The July Connector Confidence Index is 69.1 up from June at 66.7.

**World Connector Confidence Index (WCCI)**  
**>50.0 = Positive**



The **World Connector Confidence Index (WCCI)** is the average of all responses for “present situation,” and “future expectations.”

## Present Business Expectations

Industry personnel were asked, "What is your appraisal of current business conditions (positive, negative, neutral)?"

### Present Situation Index

Region	2014		2015							Confidence/ Trend
	Nov	Dec	Jan	Feb	Mar	Apr	May	Jun	Jul	
North America	78.3	87.1	90.9	81.8	85.7	91.7	82.1	76.9	87.0	Positive - Up
Europe	55.6	69.0	55.3	47.8	50.0	70.4	66.7	58.6	70.8	Positive - Up
Japan	36.8	60.0	42.1	58.1	46.2	46.7	36.4	35.7	50.0	Neutral - Up
Asia	78.9	88.5	85.7	96.6	75.0	76.9	76.0	60.7	53.8	Positive - Down
<b>World</b>	<b>62.5</b>	<b>78.2</b>	<b>70.3</b>	<b>72.4</b>	<b>66.7</b>	<b>73.9</b>	<b>70.6</b>	<b>60.8</b>	<b>66.6</b>	<b>Positive - Up</b>

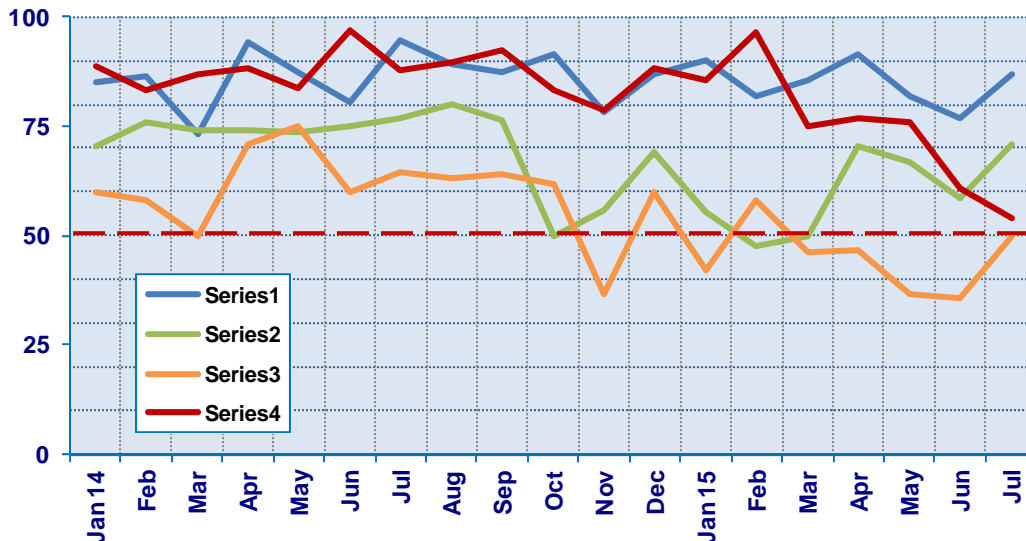
Confidence  
Trend

Pos Pos Pos Pos Pos Pos Pos Pos  
UP Down Up Down Up Down Down Up

All regions are up in confidence, except Asia. Japan has moved from negative to neutral.

### Present Situation Index

>50.0 = Positive



## Future Expectations

Industry personnel were asked, "What is your expectation of future business conditions six months from now (positive, negative, or neutral)?"

### Future Expectations Index

Region	2014		2015							Confidence/ Trend
	Nov	Dec	Jan	Feb	Mar	Apr	May	Jun	Jul	
North America	83.3	90.6	88.9	83.3	86.4	92.6	82.8	86.2	92.3	Positive - Up
Europe	66.7	69.0	64.9	65.2	57.1	83.3	70.8	66.7	79.2	Positive - Up
Japan	36.8	50.0	61.1	73.5	58.8	56.3	50.0	53.8	52.6	Positive - Down
Asia	94.4	89.3	80.0	100.0	80.0	77.8	87.5	73.1	61.5	Positive - Down
<b>World</b>	<b>70.3</b>	<b>79.9</b>	<b>75.2</b>	<b>81.9</b>	<b>71.8</b>	<b>80.0</b>	<b>76.4</b>	<b>72.4</b>	<b>72.6</b>	<b>Positive - Down</b>
Confidence		Pos	Pos	Pos	Pos	Pos	Pos	Pos	Pos	
Trend		Up	Down	Up	Down	Up	Down	Down	Down	

All regions are positive about Future Business conditions. Japan and Asia are positive, but confidence level moving lower.

### Future Expectations Index (>50.0 = Positive)

