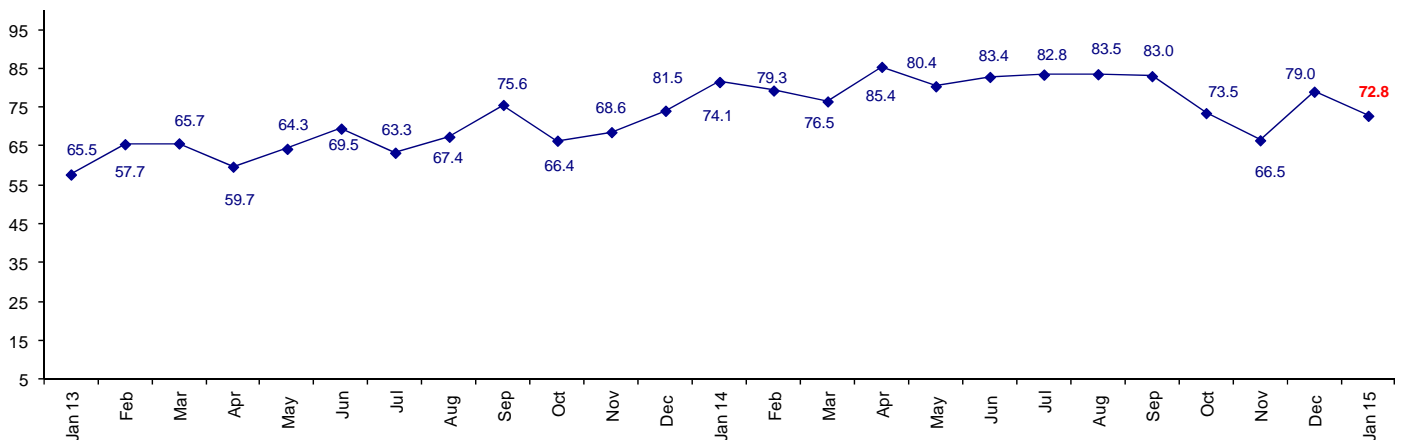


North America & Asia Very Positive Europe and Japan Confidence Weak

The January Connector Confidence Index is 72.8 lower than December at 79.0, but higher than November's low of 66.5.

World Connector Confidence Index (WCCI)
>50.0 = Positive



The **World Connector Confidence Index (WCCI)** is the average of all responses for “present situation,” and “future expectations.”

Present Business Expectations

Industry personnel were asked, "What is your appraisal of current business conditions (positive, negative, neutral)?"

Present Situation Index

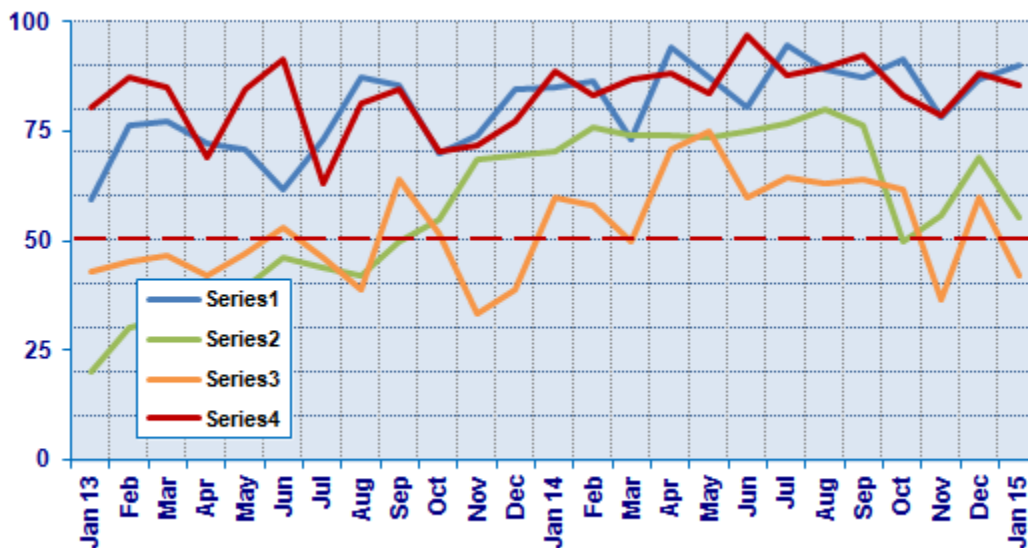
Region	2014							2015	Confidence/ Trend
	Jun	Jul	Aug	Sep	Oct	Nov	Dec	Jan	
North America	80.6	94.7	89.3	87.5	91.7	78.3	87.1	90.9	Positive - Up
Europe	75.0	76.9	80.0	76.2	50.0	55.6	69.0	55.3	Positive - Down
Japan	60.0	64.5	63.2	64.0	61.9	36.8	60.0	42.1	Negative - Down
Asia	97.1	87.8	89.7	92.3	83.3	78.9	88.5	85.7	Positive - Down
World	80.3	81.9	82.1	81.5	73.6	62.5	78.2	70.3	Positive - Down

Confidence Pos Pos Pos Pos Pos Pos Pos Pos
Trend Up Up Up Down Down UP Down

In North America and Asia confidence is very high. Europe is barely confident, and Japan has once again turned negative.

Present Situation Index

>50.0 = Positive



Future Expectations

Industry personnel were asked, "What is your expectation of future business conditions six months from now (positive, negative, or neutral)?"

Future Expectations Index

Region	2014							2015	Confidence/ Trend
	Jun	Jul	Aug	Sep	Oct	Nov	Dec	Jan	
North America	88.6	92.7	90.0	88.6	86.5	83.3	90.6	88.9	Positive - Down
Europe	80.6	81.6	84.6	81.6	56.4	66.7	69.0	64.9	Positive - Down
Japan	65.0	74.1	68.2	69.0	62.5	36.8	50.0	61.1	Positive - Up
Asia	97.1	87.8	92.9	94.6	85.7	94.4	89.3	80.0	Positive - Down
World	85.1	85.0	84.9	84.5	73.3	70.3	79.9	75.2	Positive - Down
Confidence		Pos	Pos	Pos	Pos	Pos	Pos	Pos	
Trend		Down	Down	Down	Down	Down	Up	Down	

Future business expectations are positive in all geographic regions, but moving down slightly in all regions except Japan.

Future Expectations Index (>50.0 = Positive)

