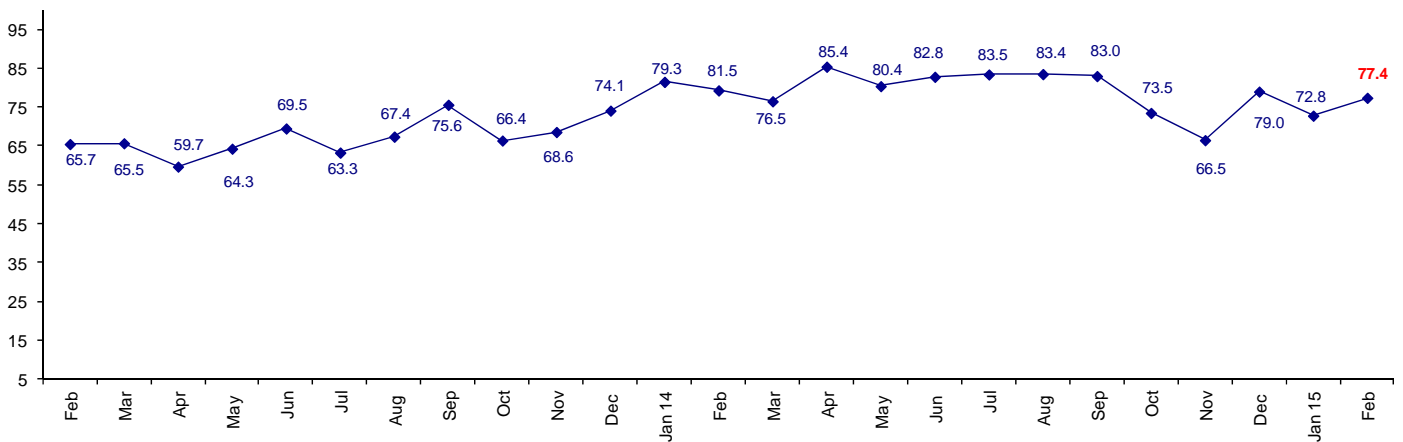


## Industry Still Confident In Business Conditions

The February Connector Confidence Index is 77.4 up from the January index of 72.8.

### World Connector Confidence Index (WCCI) >50.0 = Positive



The **World Connector Confidence Index (WCCI)** is the average of all responses for “present situation,” and “future expectations.”

## Present Business Expectations

Industry personnel were asked, "What is your appraisal of current business conditions (positive, negative, neutral)?"

### Present Situation Index

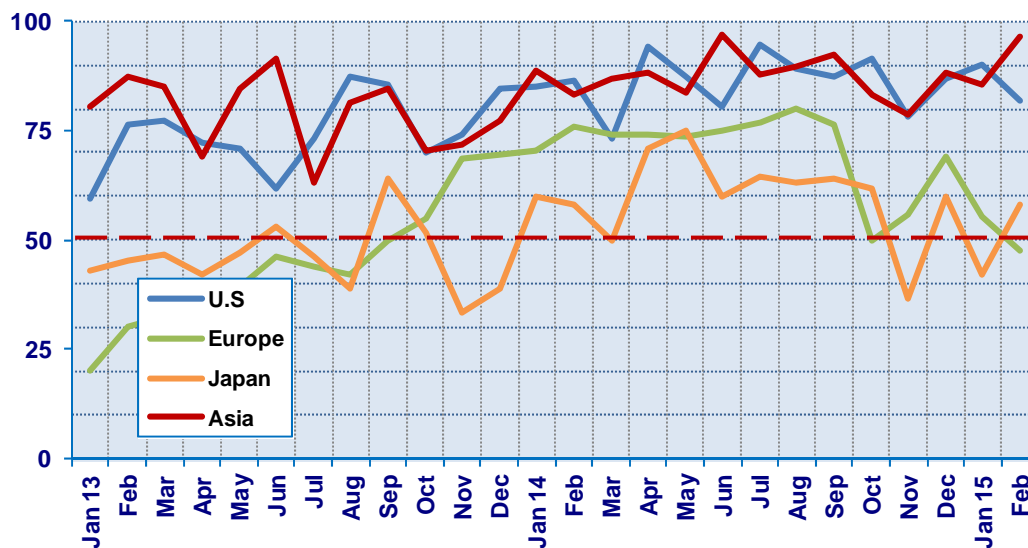
Region	2014						2015		Confidence/ Trend
	Jul	Aug	Sep	Oct	Nov	Dec	Jan	Feb	
North America	94.7	89.3	87.5	91.7	78.3	87.1	90.9	81.8	Positive - Down
Europe	76.9	80.0	76.2	50.0	55.6	69.0	55.3	47.8	Negative - Down
Japan	64.5	63.2	64.0	61.9	36.8	60.0	42.1	58.1	Positive - Up
Asia	87.8	89.7	92.3	83.3	78.9	88.5	85.7	96.6	Positive - Up
<b>World</b>	<b>81.9</b>	<b>82.1</b>	<b>81.5</b>	<b>73.6</b>	<b>62.5</b>	<b>78.2</b>	<b>70.3</b>	<b>72.4</b>	<b>Positive - Up</b>

Confidence                      Pos   Pos   Pos   Pos   Pos   Pos   Pos   Pos  
Trend                                Up   Up   Down Down   UP   Down   Up

All regions are positive about present business conditions except Europe. Japan is back to positive, and North America is positive, but down.

### Present Situation Index

>50.0 = Positive



## Future Expectations

Industry personnel were asked, "What is your expectation of future business conditions six months from now (positive, negative, or neutral)?"

### Future Expectations Index

Region	2014						2015		Confidence/ Trend
	Jul	Aug	Sep	Oct	Nov	Dec	Jan	Feb	
North America	92.7	90.0	88.6	86.5	83.3	90.6	88.9	83.3	Positive - Down
Europe	81.6	84.6	81.6	56.4	66.7	69.0	64.9	65.2	Positive - Up
Japan	74.1	68.2	69.0	62.5	36.8	50.0	61.1	73.5	Positive - Up
Asia	87.8	92.9	94.6	85.7	94.4	89.3	80.0	100.0	Positive - Up
<b>World</b>	<b>85.0</b>	<b>84.9</b>	<b>84.5</b>	<b>73.3</b>	<b>70.3</b>	<b>79.9</b>	<b>75.2</b>	<b>81.9</b>	<b>Positive - Down</b>
Confidence		Pos	Pos	Pos	Pos	Pos	Pos	Pos	
Trend		Down	Down	Down	Down	Up	Down	Up	

All regions are positive about future business conditions, and up, except North America. Asia's index is a perfect 100.0.

### Future Expectations Index (>50.0 = Positive)

