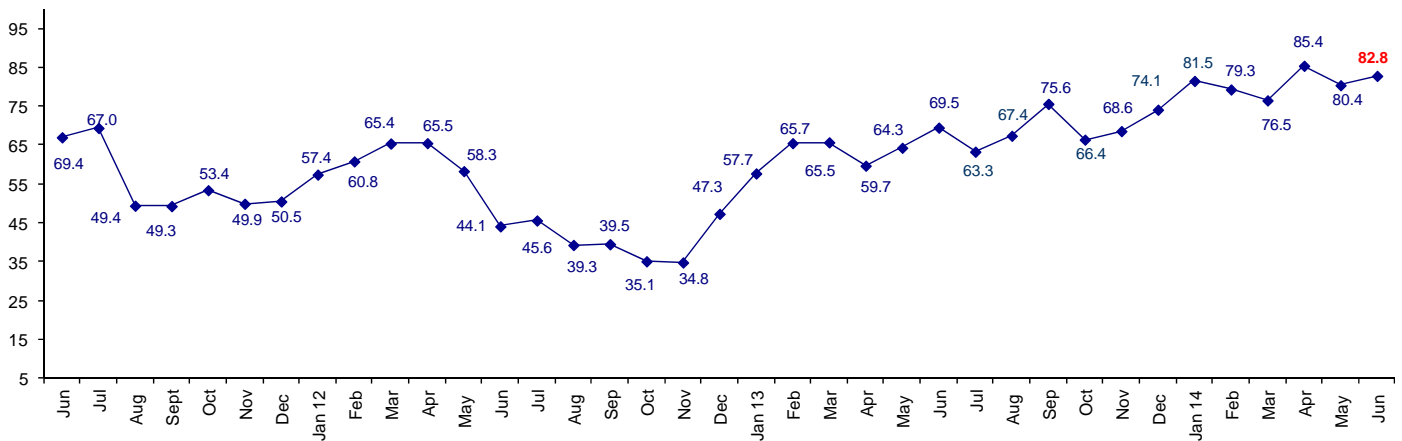


Connector Confidence has now Been Positive Sixteen Consecutive Months

The June Connector Confidence Index is 82.8 up from May at 80.4.

World Connector Confidence Index (WCCI) >50.0 = Positive



The **World Connector Confidence Index (WCCI)** is the average of all responses for “present situation,” and “future expectations.”

Present Business Expectations

Industry personnel were asked, "What is your appraisal of current business conditions (positive, negative, neutral)?"

Present Situation Index

Region	2013			2014						Confidence/ Trend
	Oct	Nov	Dec	Jan	Feb	Mar	Apr	May	Jun	
North America	70.0	73.9	84.8	85.0	86.5	73.3	94.3	87.5	80.6	Positive - Down
Europe	54.8	68.4	69.7	70.6	75.8	73.9	74.2	73.5	75.0	Positive - Up
Japan	51.9	33.3	39.1	60.0	58.3	50.0	70.8	75.0	60.0	Positive - Down
Asia	70.6	72.0	77.1	88.9	83.3	86.7	88.2	83.9	97.1	Positive - Up
World	62.6	63.5	70.2	77.8	77.9	73.7	83.1	80.5	80.3	Positive - Down

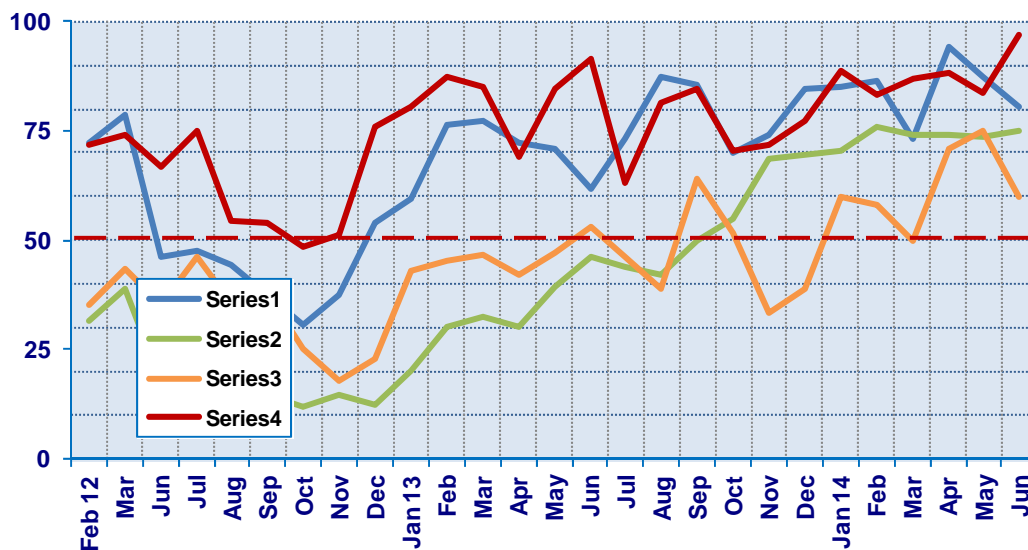
Confidence
Trend

	Pos	Pos	Pos	Pos	Pos	Pos	Pos	Pos	Pos
	Up	Up	Up	Up	Down	Up	Down	Down	Down

All regions of the industry are positive about present business conditions.

Present Situation Index

>50.0 = Positive



Future Expectations

Industry personnel were asked, "What is your expectation of future business conditions six months from now (positive, negative, neutral?)

Future Expectations Index

Region	2013			2014						Confidence/ Trend
	Oct	Nov	Dec	Jan	Feb	Mar	Apr	May	Jun	
North America	72.2	75.0	85.4	90.5	89.2	81.5	94.1	86.1	88.6	Positive - Up
Europe	69.4	80.0	78.4	81.4	88.2	84.0	83.9	78.8	80.6	Positive - Up
Japan	59.1	52.9	50.0	70.8	60.9	50.0	76.2	64.7	65.0	Positive - Up
Asia	75.0	76.7	85.0	90.5	78.0	90.3	93.3	83.9	97.1	Positive - Up
World	70.0	73.0	77.5	84.8	80.7	79.2	87.9	80.3	85.1	Positive - Up
Confidence		Pos	Pos	Pos	Pos	Pos	Pos	Pos	Pos	
Trend		Up	Up	Up	Down	Down	Up	Down	Up	

Confidence rose in all geographic regions.

Future Expectations Index

(>50.0 = Positive)

