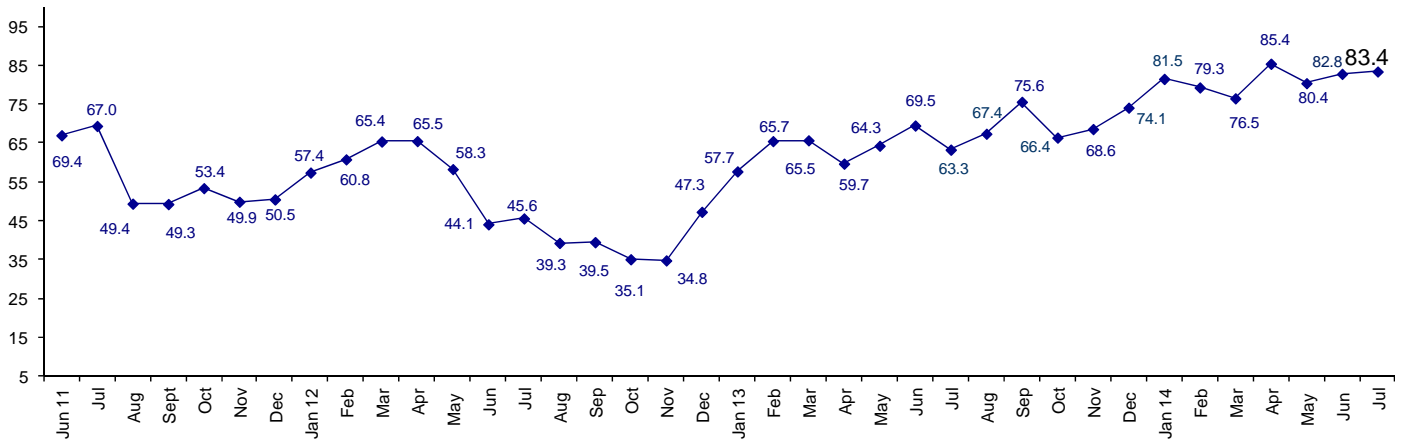


Industry Personnel Remain Very Confident about Business Conditions

The July Connector Confidence Index is 83.4 up from June at 82.8. Industry personnel became positive about business conditions in January 2013, and have remained so for twenty consecutive months.

World Connector Confidence Index (WCCI) >50.0 = Positive

The **World Connector Confidence Index (WCCI)** is the average of all responses for “present situation,” and “future expectations.”



Present Business Expectations

Industry personnel were asked, "What is your appraisal of current business conditions (positive, negative, neutral)?"

Present Situation Index

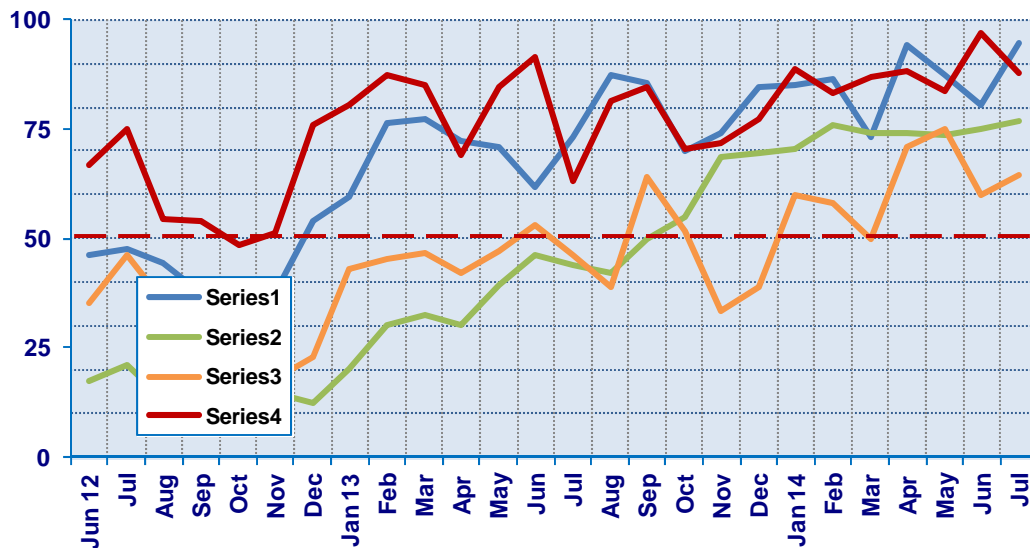
Region	2013		2014							Confidence/ Trend
	Nov	Dec	Jan	Feb	Mar	Apr	May	Jun	Jul	
North America	73.9	84.8	85.0	86.5	73.3	94.3	87.5	80.6	94.7	Positive - Up
Europe	68.4	69.7	70.6	75.8	73.9	74.2	73.5	75.0	76.9	Positive - Up
Japan	33.3	39.1	60.0	58.3	50.0	70.8	75.0	60.0	64.5	Positive - Up
Asia	72.0	77.1	88.9	83.3	86.7	88.2	83.9	97.1	87.8	Positive - Down
World	63.5	70.2	77.8	77.9	73.7	83.1	80.5	80.3	81.9	Positive - Up

Confidence Pos Pos Pos Pos Pos Pos Pos Pos Pos
Trend Up Up Up Down Up Down Down Up

All regions are positive about present business conditions. Asia is the only region that dropped in confidence.

Present Situation Index

>50.0 = Positive



Future Expectations

Industry personnel were asked, "What is your expectation of future business conditions six months from now (positive, negative, neutral?)

Future Expectations Index

Region	2013		2014							Confidence/ Trend
	Nov	Dec	Jan	Feb	Mar	Apr	May	Jun	Jul	
North America	75.0	85.4	90.5	89.2	81.5	94.1	86.1	88.6	92.7	Positive - Up
Europe	80.0	78.4	81.4	88.2	84.0	83.9	78.8	80.6	81.6	Positive - Up
Japan	52.9	50.0	70.8	60.9	50.0	76.2	64.7	65.0	74.1	Positive - Up
Asia	76.7	85.0	90.5	78.0	90.3	93.3	83.9	97.1	87.8	Positive - Down
World	73.0	77.5	84.8	80.7	79.2	87.9	80.3	85.1	85.0	Positive - Down
Confidence		Pos	Pos	Pos	Pos	Pos	Pos	Pos	Pos	
Trend		Up	Up	Down	Down	Up	Down	Up	Down	

Confidence is positive in all geographic regions. Asia dropped but is still positive about future business conditions.

Future Expectations Index

(>50.0 = Positive)

