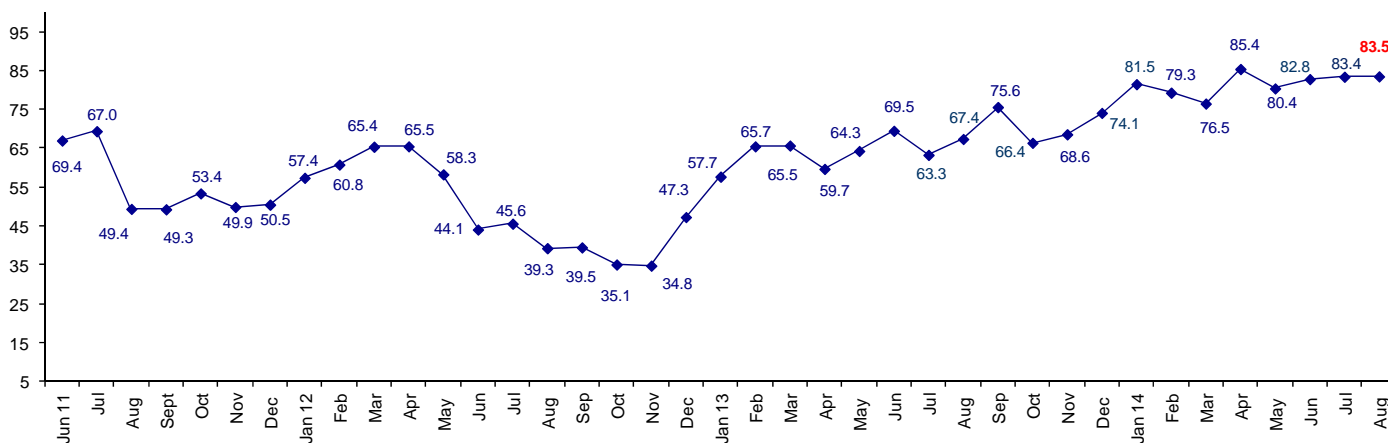


Confidence in Business Conditions Remains Strong

The August Connector Confidence Index is 83.5 about the same as July at 83.4.

World Connector Confidence Index (WCCI) >50.0 = Positive



The **World Connector Confidence Index (WCCI)** is the average of all responses for “present situation,” and “future expectations.”

Present Business Expectations

Industry personnel were asked, "What is your appraisal of current business conditions (positive, negative, neutral)?"

Present Situation Index

Region	2013 Dec	2014 Jan	2014 Feb	2014 Mar	2014 Apr	2014 May	2014 Jun	2014 Jul	2014 Aug	Confidence/ Trend
North America	84.8	85.0	86.5	73.3	94.3	87.5	80.6	94.7	89.3	Positive - Down
Europe	69.7	70.6	75.8	73.9	74.2	73.5	75.0	76.9	80.0	Positive - Up
Japan	39.1	60.0	58.3	50.0	70.8	75.0	60.0	64.5	63.2	Positive - Down
Asia	77.1	88.9	83.3	86.7	88.2	83.9	97.1	87.8	89.7	Positive - Up
World	70.2	77.8	77.9	73.7	83.1	80.5	80.3	81.9	82.1	Positive - Up

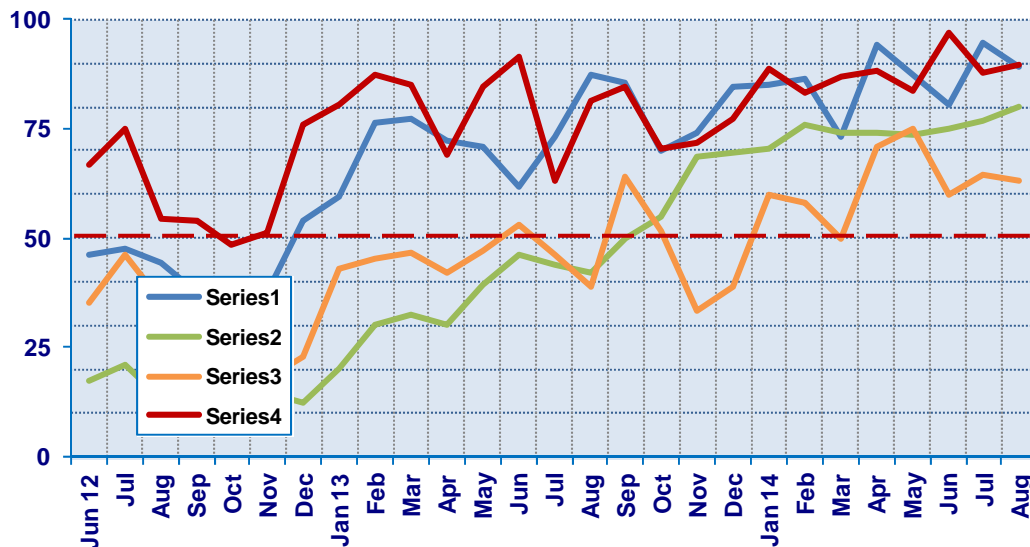
Confidence
Trend

Pos Pos Pos Pos Pos Pos Pos Pos
Up Up Down Up Down Down Up Up

All regions are positive about present business conditions. North America and Japan have dropped slightly in confidence.

Present Situation Index

>50.0 = Positive



Future Expectations

Industry personnel were asked, "What is your expectation of future business conditions six months from now (positive, negative, neutral?)

Future Expectations Index

Region	2013	2014								Confidence/ Trend
	Dec	Jan	Feb	Mar	Apr	May	Jun	Jul	Aug	
North America	85.4	90.5	89.2	81.5	94.1	86.1	88.6	92.7	90.0	Positive - Down
Europe	78.4	81.4	88.2	84.0	83.9	78.8	80.6	81.6	84.6	Positive - Up
Japan	50.0	70.8	60.9	50.0	76.2	64.7	65.0	74.1	68.2	Positive - Down
Asia	85.0	90.5	78.0	90.3	93.3	83.9	97.1	87.8	92.9	Positive - Up
World	77.5	84.8	80.7	79.2	87.9	80.3	85.1	85.0	84.9	Positive - Down
Confidence		Pos	Pos	Pos	Pos	Pos	Pos	Pos	Pos	
Trend		Up	Down	Down	Up	Down	Up	Down	Down	

Confidence is positive in all geographic regions. North America and Japan also dropped slightly in confidence about future business conditions.

Future Expectations Index

(>50.0 = Positive)

