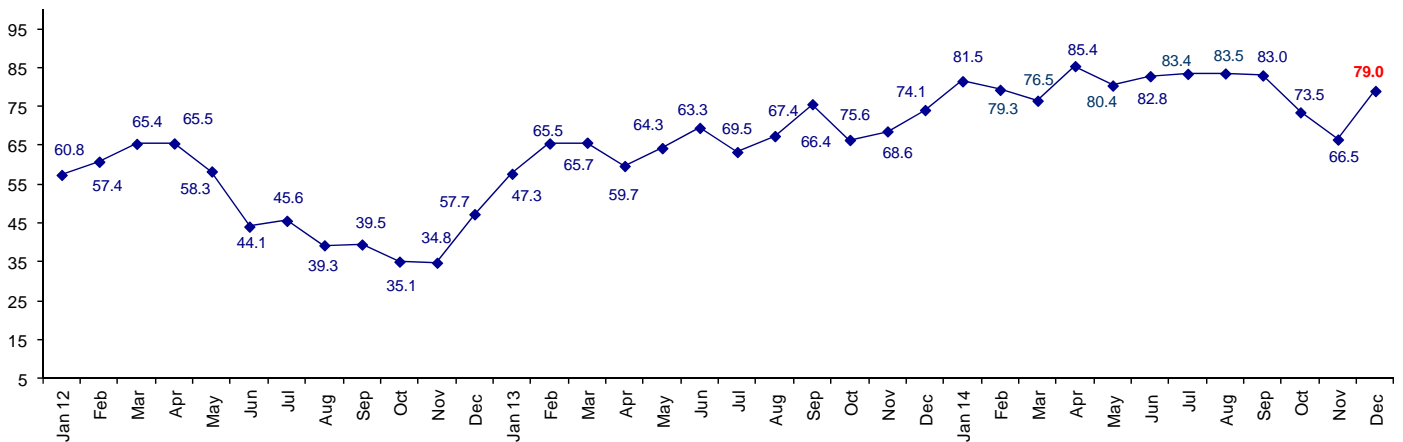


Industry Personnel Remain Confident in Business Conditions

The December Connector Confidence Index rebounded to 79.0 from November low of 66.5.

World Connector Confidence Index (WCCI) >50.0 = Positive



The **World Connector Confidence Index (WCCI)** is the average of all responses for “present situation,” and “future expectations.”

Present Business Expectations

Industry personnel were asked, "What is your appraisal of current business conditions (positive, negative, neutral)?"

Present Situation Index

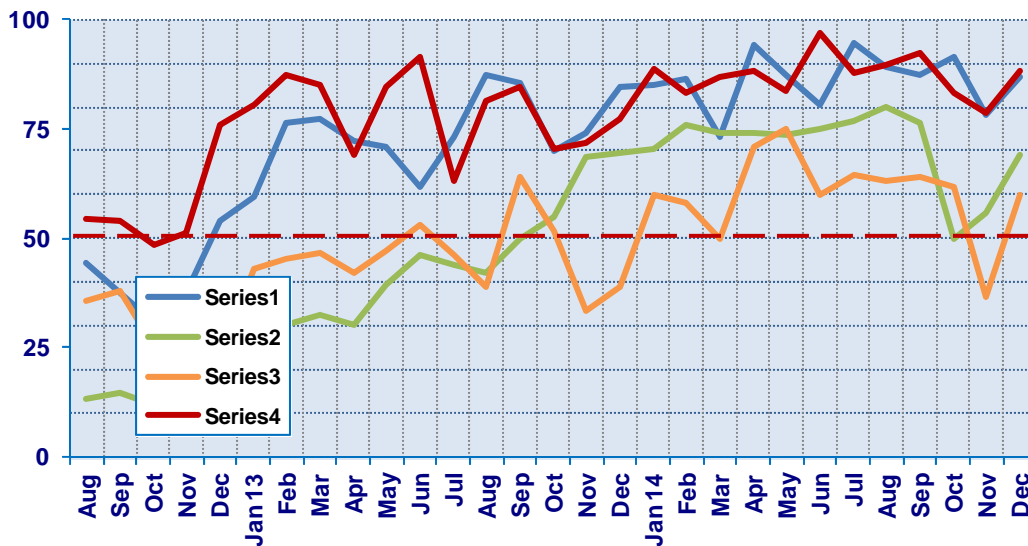
Region	2014								Confidence/ Trend
	May	Jun	Jul	Aug	Sep	Oct	Nov	Dec	
North America	87.5	80.6	94.7	89.3	87.5	91.7	78.3	87.1	Positive - Up
Europe	73.5	75.0	76.9	80.0	76.2	50.0	55.6	69.0	Positive - Up
Japan	75.0	60.0	64.5	63.2	64.0	61.9	36.8	60.0	Positive - Up
Asia	83.9	97.1	87.8	89.7	92.3	83.3	78.9	88.5	Positive - Up
World	80.5	80.3	81.9	82.1	81.5	73.6	62.5	78.2	Positive - Up

Confidence Pos Pos Pos Pos Pos Pos Pos Pos
Trend Down Up Up Up Down Down UP

All regions are positive in December and up from November's results.

Present Situation Index

>50.0 = Positive



Future Expectations

Industry personnel were asked, "What is your expectation of future business conditions six months from now (positive, negative, or neutral)?"

Future Expectations Index

Region	2014								Confidence/ Trend
	May	Jun	Jul	Aug	Sep	Oct	Nov	Dec	
North America	86.1	88.6	92.7	90.0	88.6	86.5	83.3	90.6	Positive - Up
Europe	78.8	80.6	81.6	84.6	81.6	56.4	66.7	69.0	Positive - Up
Japan	64.7	65.0	74.1	68.2	69.0	62.5	36.8	50.0	Neutral - Up
Asia	83.9	97.1	87.8	92.9	94.6	85.7	94.4	89.3	Positive - Down
World	80.3	85.1	85.0	84.9	84.5	73.3	70.3	79.9	Positive - Up
Confidence		Pos	Pos	Pos	Pos	Pos	Pos	Pos	
Trend		Up	Down	Down	Down	Down	Down	Up	

Confidence is positive in all geographic regions, except Japan which is now at neutral.

Future Expectations Index

(>50.0 = Positive)

