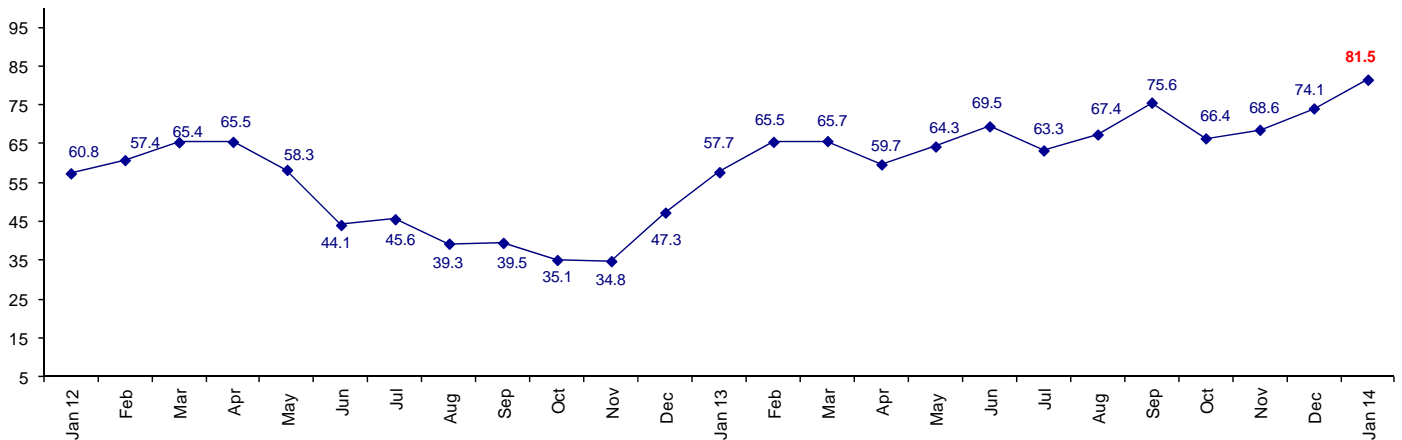


Sharp Rise in Business Confidence

The January Connector Confidence Index is 81.5 up from December at 74.1.

World Connector Confidence Index (WCCI)
>50.0 = Positive



The **World Connector Confidence Index (WCCI)** is the average of all responses for “present situation,” and “future expectations.”

Present Business Expectations

Industry personnel were asked, "What is your appraisal of current business conditions (positive, negative, neutral)?"

Present Situation Index

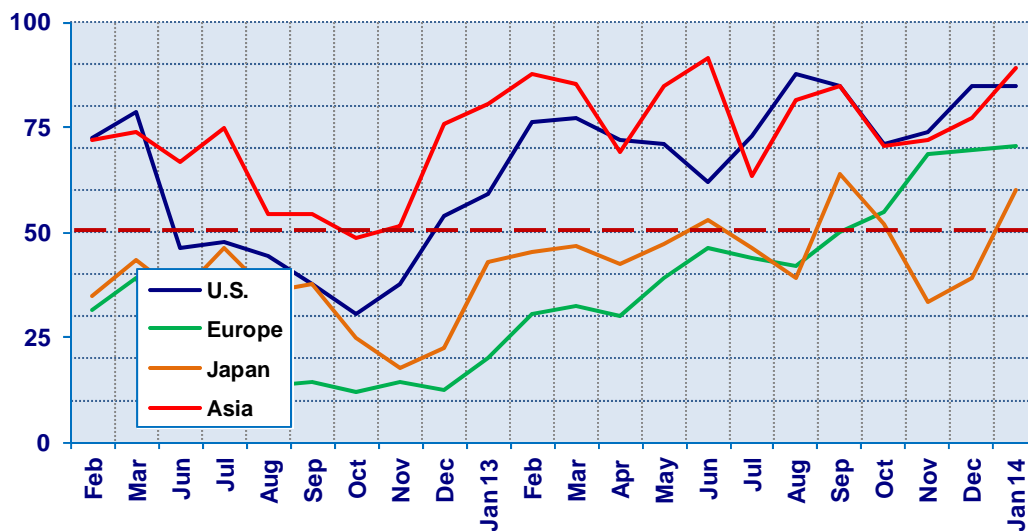
Region	2013									2014	Confidence/ Trend
	May	Jun	Jul	Aug	Sep	Oct	Nov	Dec	Jan		
North America	70.8	61.9	73.0	87.5	85.4	70.0	73.9	84.8	85.0	Positive - Up	
Europe	39.3	46.3	43.9	41.9	50.0	54.8	68.4	69.7	70.6	Positive - Up	
Japan	47.1	52.9	46.2	39.1	64.0	51.9	33.3	39.1	60.0	Positive - Up	
Asia	84.6	91.3	63.2	81.3	84.6	70.6	72.0	77.1	88.9	Positive - Up	
World	61.1	62.9	57.0	62.7	73.3	62.6	63.5	70.2	77.8	Positive - Up	

Confidence Pos Pos Pos Pos Pos Pos Pos Pos Pos
Trend Up Down Up Up Down Up Up Up

Confidence rises in all regions with a sharp upturn in Japan.

Present Situation Index

>50.0 = Positive



Future Expectations

Industry personnel were asked, "What is your expectation of future business conditions six months from now (positive, negative, neutral?)

Future Expectations Index

Region	May	Jun	Jul	Aug	Sep	Oct	Nov	Dec	2014 Jan	Confidence/ Trend
North America	71.4	82.1	85.0	90.3	83.3	72.2	75.0	85.4	90.5	Positive - Up
Europe	46.4	64.3	58.5	61.8	67.6	69.4	80.0	78.4	81.4	Positive - Up
Japan	66.7	68.4	58.3	48.0	63.0	59.1	52.9	50.0	70.8	Positive - Up
Asia	85.2	84.6	72.2	80.6	90.0	75.0	76.7	85.0	90.5	Positive - Up
World	67.3	75.2	69.5	67.4	77.6	70.0	73.0	77.5	84.8	Positive - Up

Confidence Pos Pos Pos Pos Pos Pos Pos Pos Pos
Trend Up Down Down Up Down Up Up Up

North America and Asia hit a confidence level of 90.5. Europe and Japan are trending up.

Future Expectations Index

(>50.0 = Positive)

