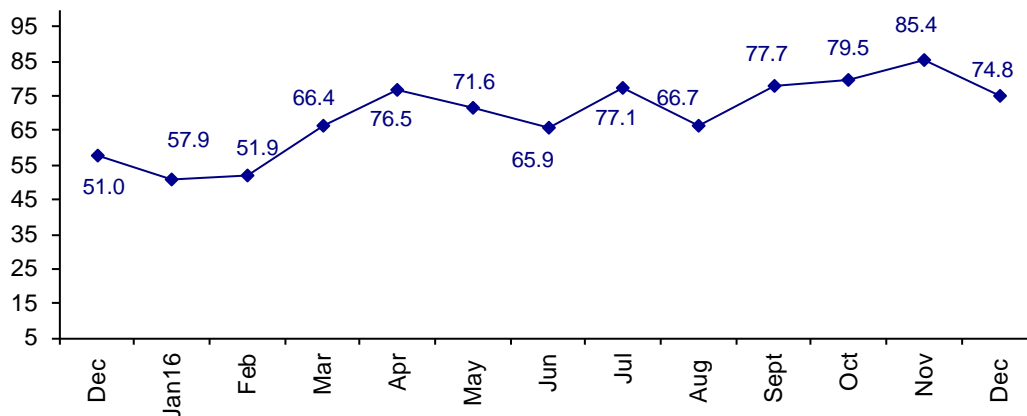


Confidence in Europe Still Positive but Moves Lower

The December Connector Confidence Index is 74.8 down from November at 85.4.

World Connector Confidence Index (WCCI)
>50.0 = Positive



The **World Connector Confidence Index (WCCI)** is the average of all responses for “present situation,” and “future expectations.”

Present Business Expectations

Industry personnel were asked, "What is your appraisal of current business conditions (positive, negative, neutral)?"

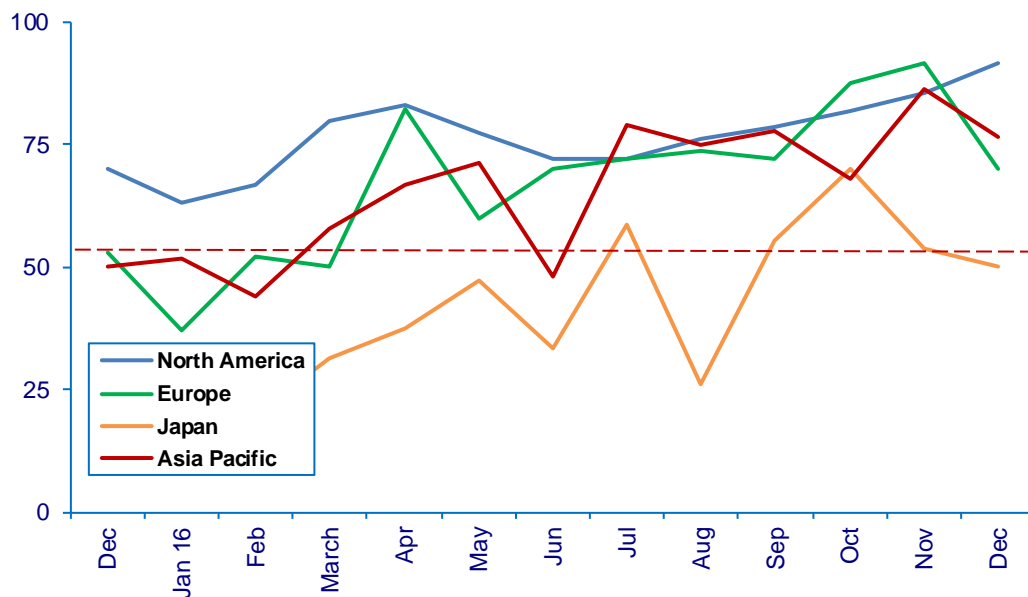
Present Situation Index – 75.3

	Jun	Jul	Aug	Sept	Oct	Nov	Dec	Confidence Level	Confidence Trend
North America	72.2	72.2	76.2	78.6	81.8	85.7	91.7	+	↑
Europe	70.0	72.2	73.7	72.3	87.5	91.7	70.0	+	↓
Japan	33.3	58.8	26.3	55.6	70.0	53.8	50.0	Neu	↓
Asia	48.0	78.9	75.0	77.8	68.2	86.4	76.5	+	↓
World	56.4	70.8	63.9	73.6	77.1	82.5	75.3	+	↓
Confidence	+	+	+	+	+	+	+		
Trend		↑	↓	↑	↑	↑	↓		

All regions are positive, except Japan which is now neutral, about present business conditions. All regions except North America dropped in confidence.

Present Situation Index

>50.0 = Positive



Future Expectations

Industry personnel were asked, "What is your expectation of future business conditions six months from now (positive, negative, or neutral)?"

Future Expectations Index – 74.4

Region	Jun	Jul	Aug	Sept	Oct	Nov	Dec	Confidence Level	Confidence Trend
North America	86.4	89.5	80.8	90.5	90.9	92.3	91.7	+	↓
Europe	78.9	93.8	76.0	80.0	86.4	95.8	69.6	+	↓
Japan	56.3	71.4	42.1	66.7	70.0	58.3	45.5	-	↓
Asia	69.2	78.3	70.4	90.9	72.7	90.9	75.0	+	↓
World	74.4	83.3	69.1	83.8	81.6	88.1	74.4	+	↓
Confidence	+	+	+	+	+	+	+		
Trend		↑	↓	↑	↓	↑	↓		

All regions are positive about future confidence, except Japan which is at negative. All have dropped in confidence.

Future Expectations Index (>50.0 = Positive)

