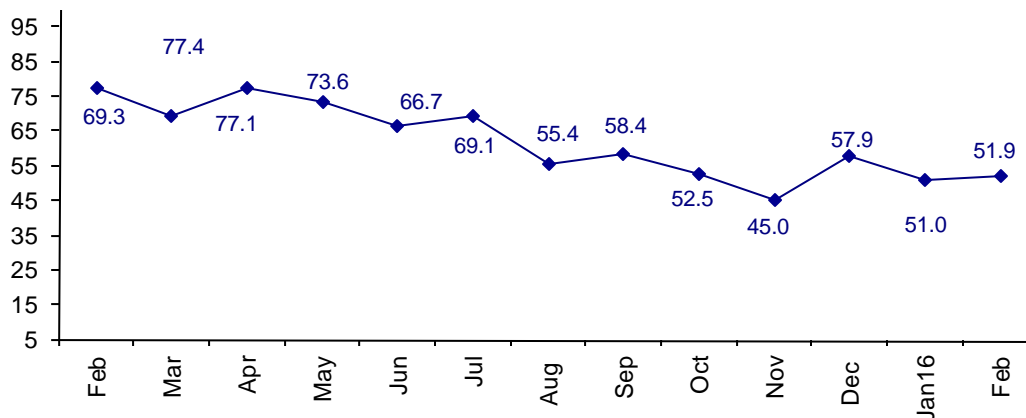


January Connector Sales Down -4.7%

January was the 13th consecutive month in which connector sales declined. The outlook is for a continuation of lethargic demand for connectors. As a result, industry personnel are not very positive of the near future.

The February Connector Confidence Index is 51.9 which is modestly positive.

World Connector Confidence Index (WCCI) >50.0 = Positive



The **World Connector Confidence Index (WCCI)** is the average of all responses for “present situation,” and “future expectations.”

Present Business Expectations

Industry personnel were asked, "What is your appraisal of current business conditions (positive, negative, neutral)?"

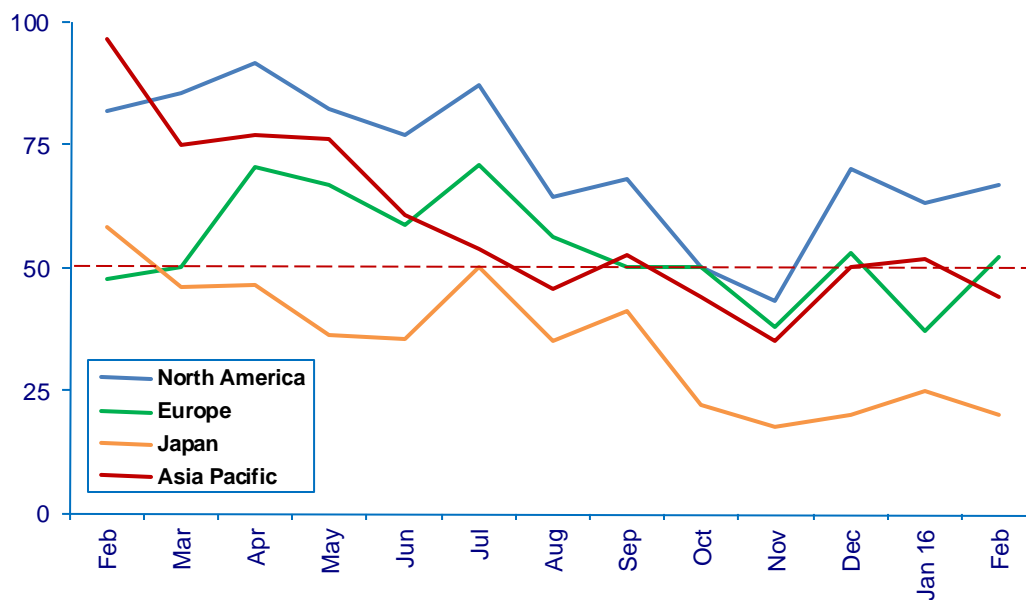
Present Situation Index

Region	Aug	Sep	Oct	Nov	Dec	Jan	Feb	Confidence Level	Confidence Trend
North America	78.6	75.9	50.0	43.4	70.0	63.2	66.7	+	↑
Europe	63.0	61.3	50.0	38.1	52.9	37.0	52.2	+	↑
Japan	50.0	35.0	22.2	17.6	20.0	25.0	20.0	-	↓
Asia	62.5	36.7	44.0	35.0	50.0	51.7	44.0	-	↓
World	65.0	53.6	43.0	34.6	52.4	45.1	46.1	-	↑
Confidence		+	-	-	+	-	-		
Trend		↓	↓	↓	↑	↓	↑		

Two regions are negative. Two regions are positive. Europe bounces up and down in confidence level. Japan remains very low in confidence, and Asia is also down in confidence.

Present Situation Index

>50.0 = Positive



Future Expectations

Industry personnel were asked, "What is your expectation of future business conditions six months from now (positive, negative, or neutral)?"

Future Expectations Index

Region	Aug	Sep	Oct	Nov	Dec	Jan	Feb	Confidence Level	Confidence Trend
North America	68.8	81.0	72.0	60.9	69.0	62.1	81.8	+	↑
Europe	65.8	66.7	70.4	65.2	68.0	61.5	52.0	+	↓
Japan	47.6	38.9	38.5	27.8	38.5	35.3	35.0	-	↓
Asia	46.7	63.2	57.1	58.3	60.0	58.6	59.3	+	↑
World	58.7	63.2	62.8	54.5	62.2	56.4	57.4	+	↑
Confidence		+	+	+	+	+	+		
Trend		↑	↓	↓	↑	↓	↑		

North America and Asia are up in future expectations. Japan is the only region that is negative again.

Future Expectations Index

(>50.0 = Positive)

