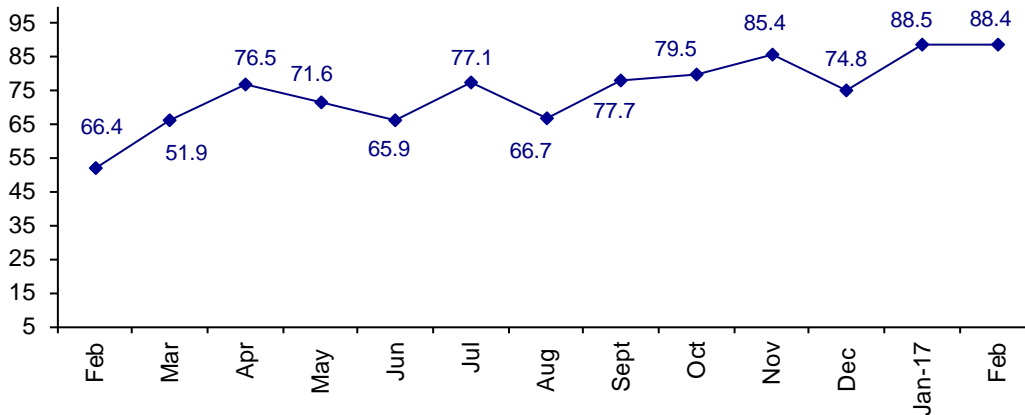


Industry Very Confident In Business Conditions

The February Confidence Index is 88.4 about the same as January at 88.5.

World Connector Confidence Index (WCCI)
>50.0 = Positive



The **World Connector Confidence Index (WCCI)** is the average of all responses for “present situation,” and “future expectations.”

Present Business Expectations

Industry personnel were asked, "What is your appraisal of current business conditions (positive, negative, neutral)?"

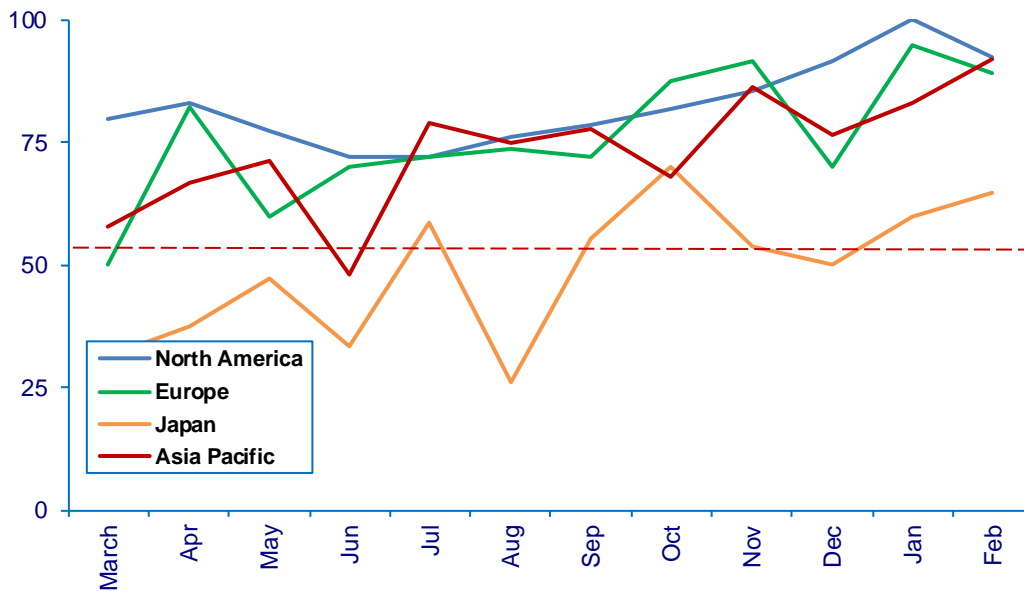
Present Situation Index – 86.5

	Sept	Oct	Nov	Dec	Jan	Feb	Confidence Level	Confidence Trend
North America	78.6	81.8	85.7	91.7	100.0	92.3	+	↓
Europe	72.3	87.5	91.7	70.0	94.7	89.3	+	↓
Japan	55.6	70.0	53.8	50.0	60.0	64.7	+	↑
Asia	77.8	68.2	86.4	76.5	83.3	92.0	+	↑
World	73.6	77.1	82.5	75.3	87.5	86.5	+	↓
Confidence	+	+	+	+	+	+		
Trend		↑	↑	↓	↑	↓		

All regions are positive about Present Business Conditions. North America and Europe dropped slightly in confidence.

Present Situation Index

>50.0 = Positive



Future Expectations

Industry personnel were asked, "What is your expectation of future business conditions six months from now (positive, negative, or neutral)?"

Future Expectations Index – 90.4

Region	Sept	Oct	Nov	Dec	Jan	Feb	Confidence Level	Confidence Trend
North America	90.5	90.9	92.3	91.7	100.0	89.3	+	↓
Europe	80.0	86.4	95.8	69.6	94.4	96.2	+	↑
Japan	66.7	70.0	58.3	45.5	61.5	78.6	+	↑
Asia	90.9	72.7	90.9	75.0	91.3	92.3	+	↑
World	83.8	81.6	88.1	74.4	89.5	90.4	+	↑
Confidence	+	+	+	+	+	+		
Trend		↓	↑	↓	↑	↓		

All regions are positive about future business conditions. North American is the only region that dropped in confidence.

Future Expectations Index (>50.0 = Positive)

