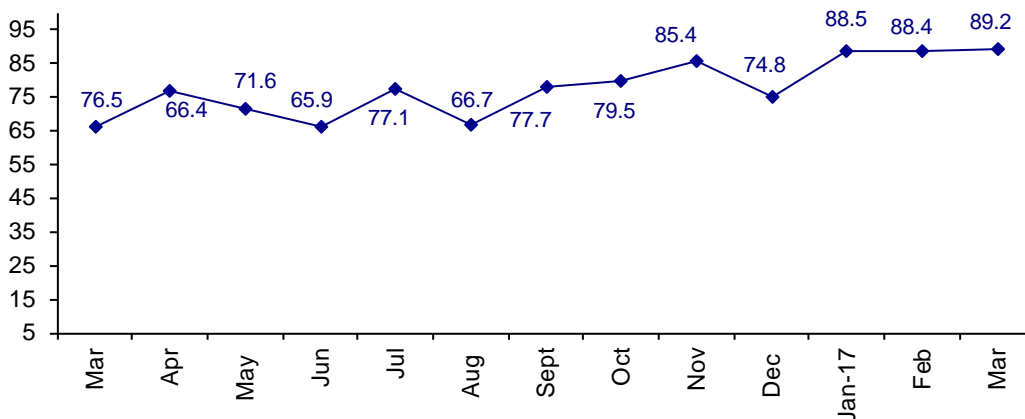


Connector Demand Strong Worldwide Industry Personnel Confident in Business Conditions

The March Confidence Index is 89.2 up slightly from 88.4. in February.

World Connector Confidence Index (WCCI)
>50.0 = Positive



The **World Connector Confidence Index (WCCI)** is the average of all responses for “present situation,” and “future expectations.”

Present Business Expectations

Industry personnel were asked, "What is your appraisal of current business conditions (positive, negative, neutral)?"

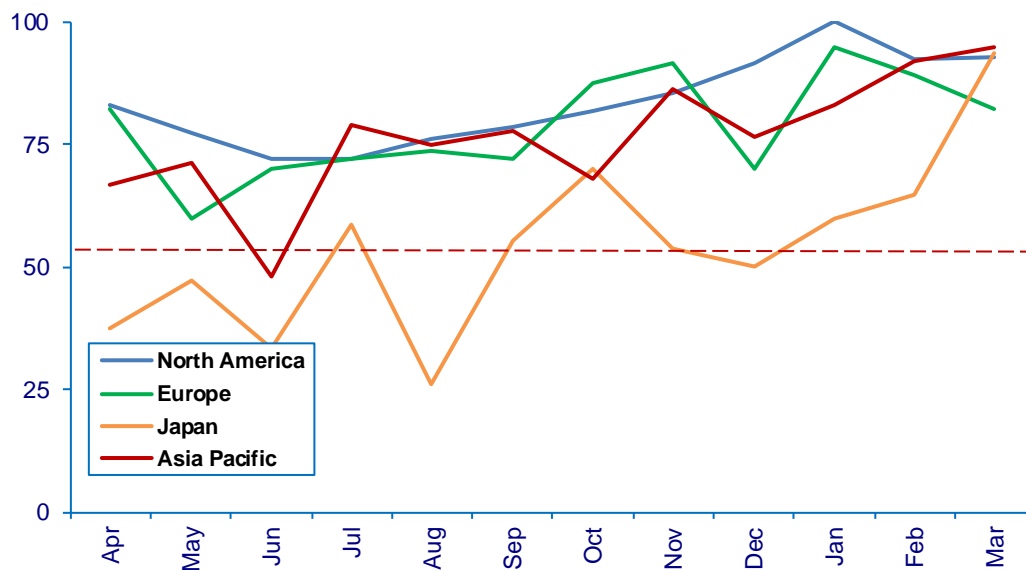
Present Situation Index – 90.2

	Oct	Nov	Dec	Jan	Feb	Mar	Confidence Level	Confidence Trend
North America	81.8	85.7	91.7	100.0	92.3	92.9	+	↑
Europe	87.5	91.7	70.0	94.7	89.3	82.1	+	↓
Japan	70.0	53.8	50.0	60.0	64.7	93.8	+	↑
Asia	68.2	86.4	76.5	83.3	92.0	95.0	+	↑
World	77.1	82.5	75.3	87.5	86.5	90.2	+	↑
Confidence	+	+	+	+	+	+		
Trend		↑	↓	↑	↓	↑		

All regions are positive about Present Business Conditions. Japan rose dramatically. Europe's confidence dropped slightly.

Present Situation Index

>50.0 = Positive



Future Expectations

Industry personnel were asked, "What is your expectation of future business conditions six months from now (positive, negative, or neutral)?"

Future Expectations Index – 88.1

Region	Oct	Nov	Dec	Jan	Feb	Mar	Confidence Level	Confidence Trend
North America	90.9	92.3	91.7	100.0	89.3	92.3	+	↑
Europe	86.4	95.8	69.6	94.4	96.2	83.3	+	↓
Japan	70.0	58.3	45.5	61.5	78.6	86.7	+	↑
Asia	72.7	90.9	75.0	91.3	92.3	89.5	+	↓
World	81.6	88.1	74.4	89.5	90.4	88.1	+	↓
Confidence	+	+	+	+	+	+		
Trend		↑	↓	↑	↑	↓		

All regions are positive about future business conditions. Europe and Asia dropped, but still very confident in Future business.

Future Expectations Index

(>50.0 = Positive)

