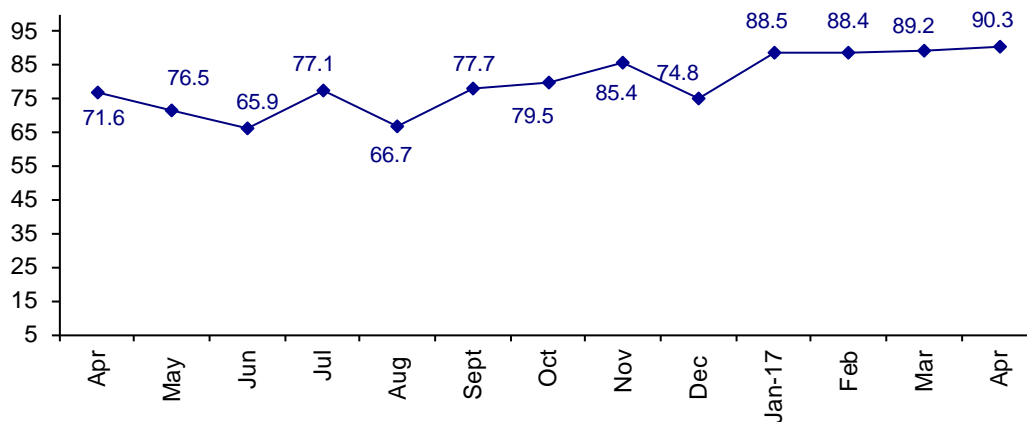


Business is Good And Confidence is High

The April Confidence Index is 90.3 up from March at 89.2.

World Connector Confidence Index (WCCI)
>50.0 = Positive



The **World Connector Confidence Index (WCCI)** is the average of all responses for “present situation,” and “future expectations.”

Present Business Expectations

Industry personnel were asked, "What is your appraisal of current business conditions (positive, negative, neutral)?"

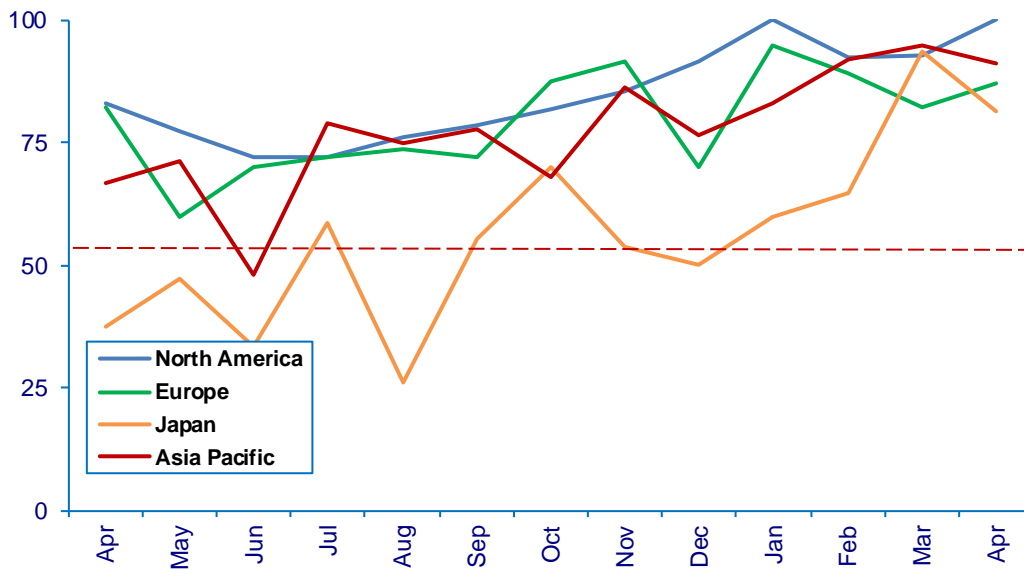
Present Situation Index – 92.1

	Nov	Dec	Jan	Feb	Mar	Apr	Confidence Level	Confidence Trend
North America	85.7	91.7	100.0	92.3	92.9	100.0	+	↑
Europe	91.7	70.0	94.7	89.3	82.1	87.0	+	↑
Japan	53.8	50.0	60.0	64.7	93.8	89.5	+	↓
Asia	86.4	76.5	83.3	92.0	95.0	92.6	+	↓
World	82.5	75.3	87.5	86.5	90.2	92.1	+	↑
Confidence	+	+	+	+	+	+		
Trend		↓	↑	↓	↑	↑		

All regions are positive about Present Business Conditions, especially North America.

Present Situation Index

>50.0 = Positive



Future Expectations

Industry personnel were asked, "What is your expectation of future business conditions six months from now (positive, negative, or neutral)?"

Future Expectations Index – 88.5

Region	Nov	Dec	Jan	Feb	Mar	Apr	Confidence Level	Confidence Trend
North America	92.3	91.7	100.0	89.3	92.3	96.3	+	↑
Europe	95.8	69.6	94.4	96.2	83.3	81.0	+	↓
Japan	58.3	45.5	61.5	78.6	86.7	81.3	+	↓
Asia	90.9	75.0	91.3	92.3	89.5	91.3	+	↑
World	88.1	74.4	89.5	90.4	88.1	88.5	+	↑
Confidence	+	+	+	+	+	+		
Trend		↓	↑	↑	↓	↑		

All regions are positive about future business conditions. Europe and Japan dropped, but still very confident in Future business.

Future Expectations Index

(>50.0 = Positive)

