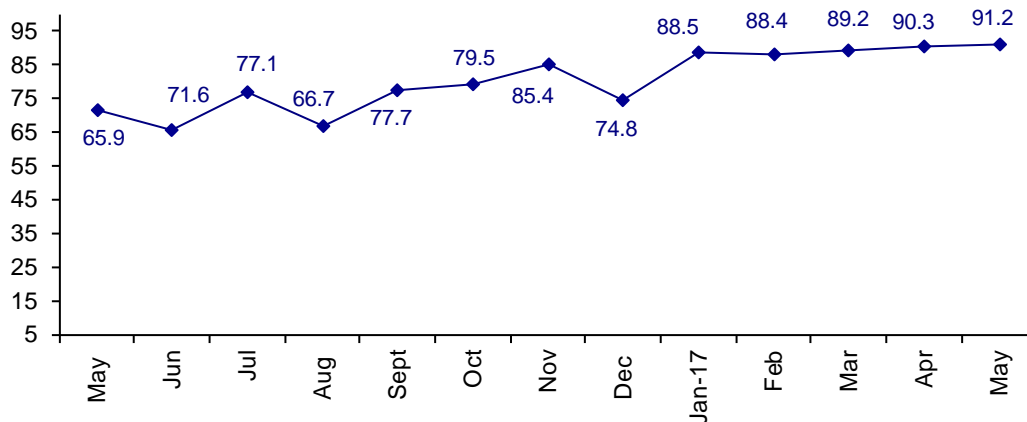


**Industry Sales Up +8.9% in April
Confidence in Future Business Conditions
Is Very High**

The May Confidence Index is 91.2 up from April at 90.3 and from March at 89.2.

**World Connector Confidence Index (WCCI)
>50.0 = Positive**



The **World Connector Confidence Index (WCCI)** is the average of all responses for “present situation,” and “future expectations.”

Present Business Expectations

Industry personnel were asked, "What is your appraisal of current business conditions (positive, negative, neutral)?"

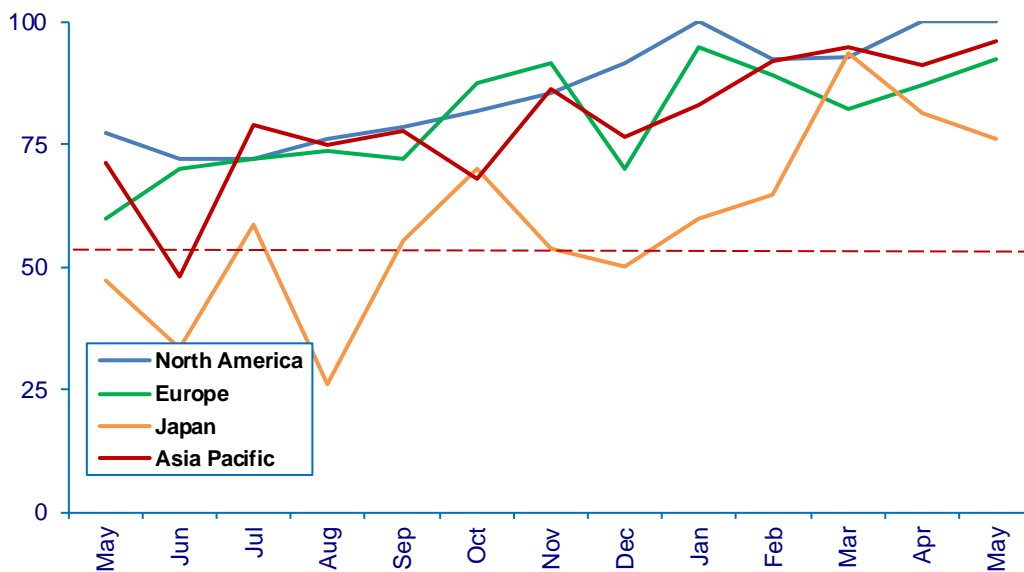
Present Situation Index – 91.6

	Dec	Jan	Feb	Mar	Apr	May	Confidence Level	Confidence Trend
North America	91.7	100.0	92.3	92.9	100.0	100.0	+	Same
Europe	70.0	94.7	89.3	82.1	87.0	92.3	+	↑
Japan	50.0	60.0	64.7	93.8	89.5	76.2	+	↓
Asia	76.5	83.3	92.0	95.0	92.6	96.2	+	↑
World	75.3	87.5	86.5	90.2	92.1	91.6	+	↓
Confidence	+	+	+	+	+	+		
Trend		↑	↓	↑	↑	↓		

North America is again this month extremely positive about present business conditions. Japan is the only region that dropped in confidence.

Present Situation Index

>50.0 = Positive



Future Expectations

Industry personnel were asked, "What is your expectation of future business conditions six months from now (positive, negative, or neutral)?"

Future Expectations Index – 90.7

Region	Dec	Jan	Feb	Mar	Apr	May	Confidence Level	Confidence Trend
North America	91.7	100.0	89.3	92.3	96.3	95.8	+	↓
Europe	69.6	94.4	96.2	83.3	81.0	88.5	+	↑
Japan	45.5	61.5	78.6	86.7	81.3	81.0	+	↓
Asia	75.0	91.3	92.3	89.5	91.3	96.2	+	↑
World	74.4	89.5	90.4	88.1	88.5	90.7	+	↑
Confidence	+	+	+	+	+	+		
Trend		↑	↑	↓	↑	↑		

All regions are positive about future business conditions. North America and Japan dropped, but still very confident in Future business.

Future Expectations Index

(>50.0 = Positive)

