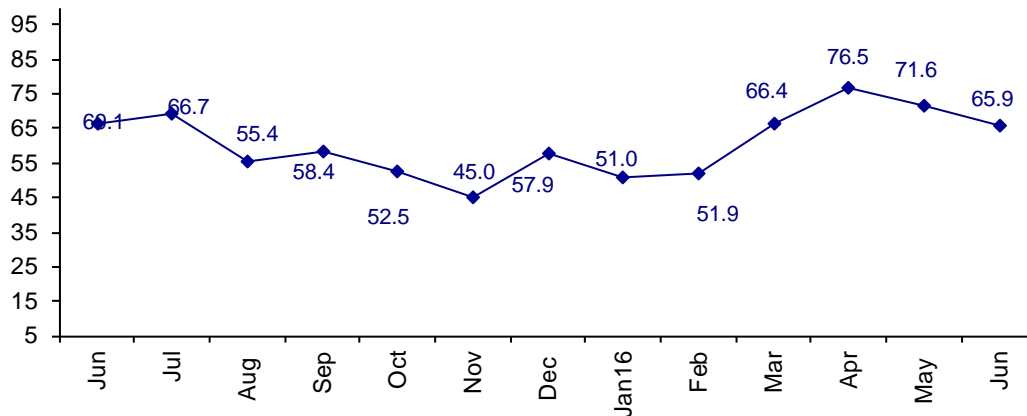


Industry Still Confident In Business Conditions

The June Connector Confidence Index is 65.9 down from May at 71.6.

World Connector Confidence Index (WCCI)
>50.0 = Positive



The **World Connector Confidence Index (WCCI)** is the average of all responses for “present situation,” and “future expectations.”

Present Business Expectations

Industry personnel were asked, "What is your appraisal of current business conditions (positive, negative, neutral)?"

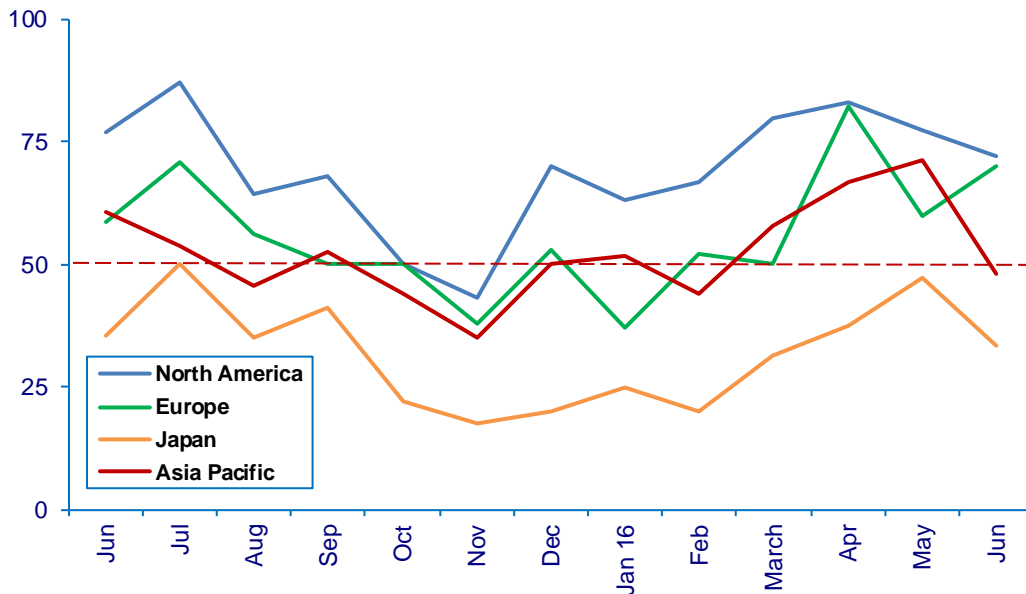
Present Situation Index – 56.4

	Dec	Jan	Feb	Mar	Apr	May	Jun	Confidence Level	Confidence Trend
North America	70.0	63.2	66.7	80.0	83.3	77.3	72.2	+	↓
Europe	52.9	37.0	52.2	50.0	82.4	60.0	70.0	+	↑
Japan	20.0	25.0	20.0	31.3	37.5	47.4	33.3	-	↓
Asia	50.0	51.7	44.0	64.7	66.7	71.4	48.0	-	↓
World	52.4	45.1	46.1	58.0	71.0	64.6	56.4	+	↓
Confidence	+	-	-	+	+	+	+		
Trend		↓	↑	↑	↑	↓	↓		

North America and Europe are positive. Japan and Asia are negative. The drop in Asia was significant and bears watching.

Present Situation Index

>50.0 = Positive



Future Expectations

Industry personnel were asked, "What is your expectation of future business conditions six months from now (positive, negative, or neutral)?"

Future Expectations Index – 74.4

Region	Dec	Jan	Feb	Mar	Apr	May	Jun	Confidence Level	Confidence Trend
North America	69.0	62.1	81.8	85.7	85.7	88.0	86.4	+	↓
Europe	68.0	61.5	52.0	76.2	88.2	82.4	78.9	+	↓
Japan	38.5	35.3	35.0	52.9	62.5	68.8	56.3	+	↓
Asia	60.0	58.6	59.3	76.2	77.8	72.7	69.2	+	↓
World	62.2	56.4	57.4	73.8	81.3	78.8	74.4	+	↓
Confidence	+	+	+	+	+	+	+		
Trend		↓	↑	↑	↑	↓	↓		

All regions remain positive about the future, but dropped from the May levels.

Future Expectations Index

(>50.0 = Positive)

