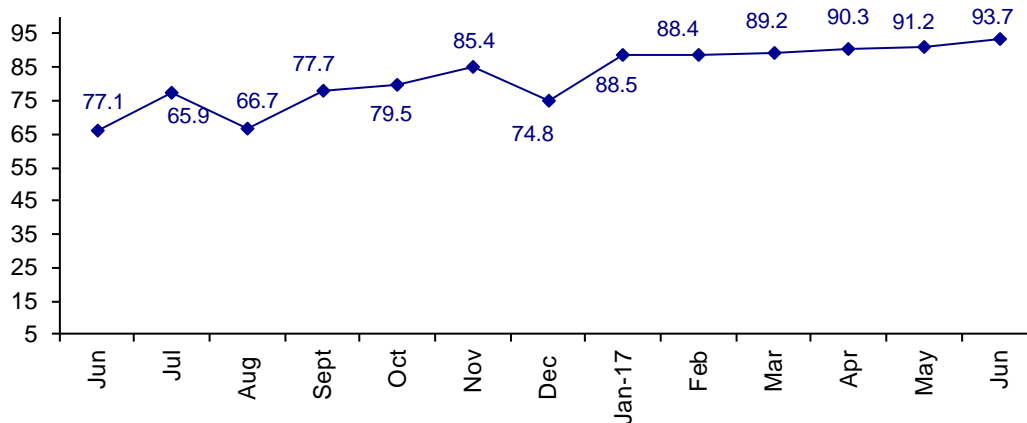


News Brief No-28-17
June 28, 2017

**Industry Sales Up +9.4% in May
Fourteenth Consecutive Month of Growth
Confidence Very High**

The June Confidence Index is 93.7 up from May at 91.2. Confidence is steadily moving upward.

World Connector Confidence Index (WCCI)
>50.0 = Positive



The **World Connector Confidence Index (WCCI)** is the average of all responses for “present situation,” and “future expectations.”

Present Business Expectations

Industry personnel were asked, "What is your appraisal of current business conditions (positive, negative, neutral)?"

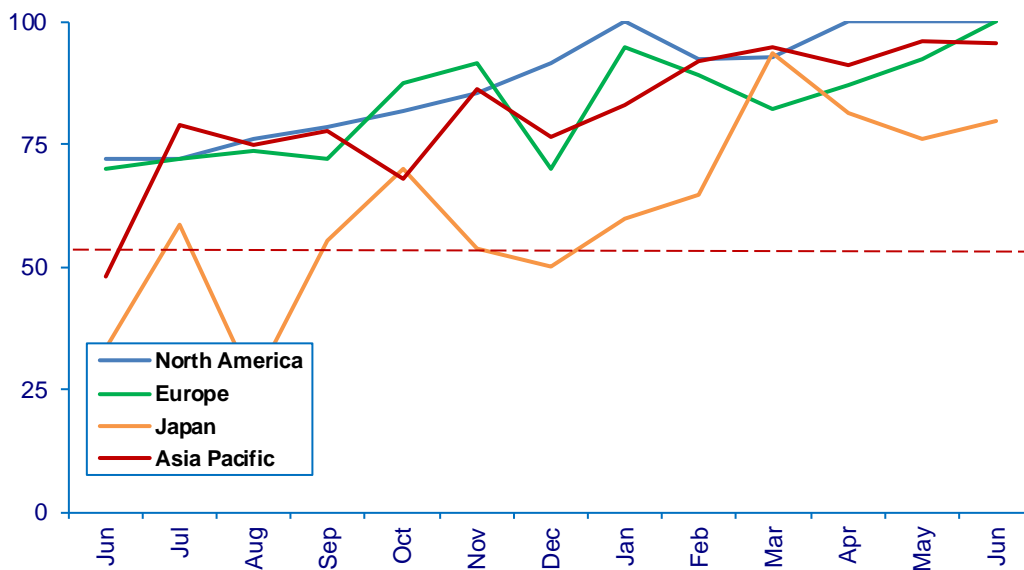
Present Situation Index – 94.3

	Jan	Feb	Mar	Apr	May	Jun	Confidence Level	Confidence Trend
North America	100.0	92.3	92.9	100.0	100.0	100.0	+	Same
Europe	94.7	89.3	82.1	87.0	92.3	100.0	+	↑
Japan	60.0	64.7	93.8	89.5	76.2	80.0	+	↑
Asia	83.3	92.0	95.0	92.6	96.2	95.8	+	↑
World	87.5	86.5	90.2	92.1	91.6	94.3	+	↑
Confidence	+	+	+	+	+	+		
Trend		↓	↑	↑	↑	↑		

North America, for the third month in a row, is extremely positive about present business conditions. Europe has the same amount of confidence as North America. All regions are up and positive.

Present Situation Index

>50.0 = Positive



Future Expectations

Industry personnel were asked, "What is your expectation of future business conditions six months from now (positive, negative, or neutral)?"

Future Expectations Index – 93.0

Region	Jan	Feb	Mar	Apr	May	Jun	Confidence Level	Confidence Trend
North America	100.0	89.3	92.3	96.3	95.8	100.0	+	↑
Europe	94.4	96.2	83.3	81.0	88.5	95.7	+	↑
Japan	61.5	78.6	86.7	81.3	81.0	81.3	+	↑
Asia	91.3	92.3	89.5	91.3	96.2	95.5	+	↓
World	89.5	90.4	88.1	88.5	90.7	93.0	+	↑
Confidence	+	+	+	+	+	+		
Trend		↑	↓	↑	↑	↑		

All regions are positive about future business conditions. North America is as confident in the future as it is of the present. All regions are positive, only Japan dropped slightly from May.

Future Expectations Index

(>50.0 = Positive)

