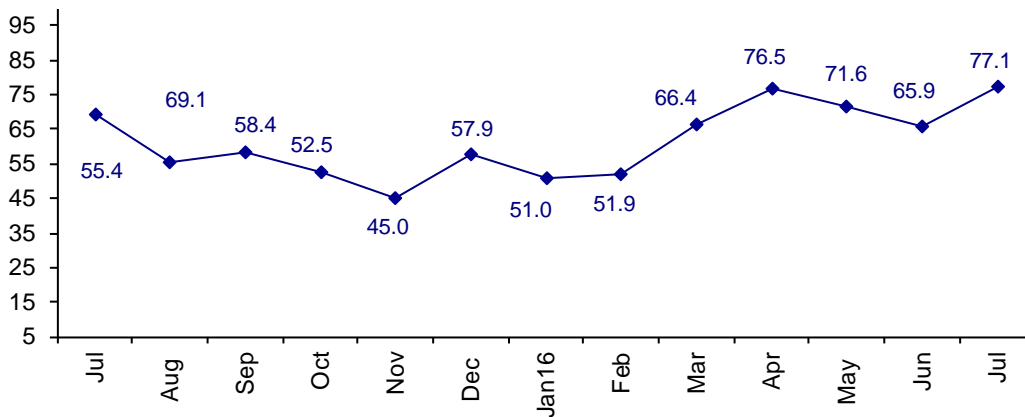


Industry Personnel Become More Confident

The July Connector Confidence Index is 77.1 up from June at 65.9. The increase in confidence is the product of improving demand for interconnects in 2Q16. See the July Bishop Report for details.

World Connector Confidence Index (WCCI)
>50.0 = Positive



The **World Connector Confidence Index (WCCI)** is the average of all responses for “present situation,” and “future expectations.”

Present Business Expectations

Industry personnel were asked, "What is your appraisal of current business conditions (positive, negative, neutral)?"

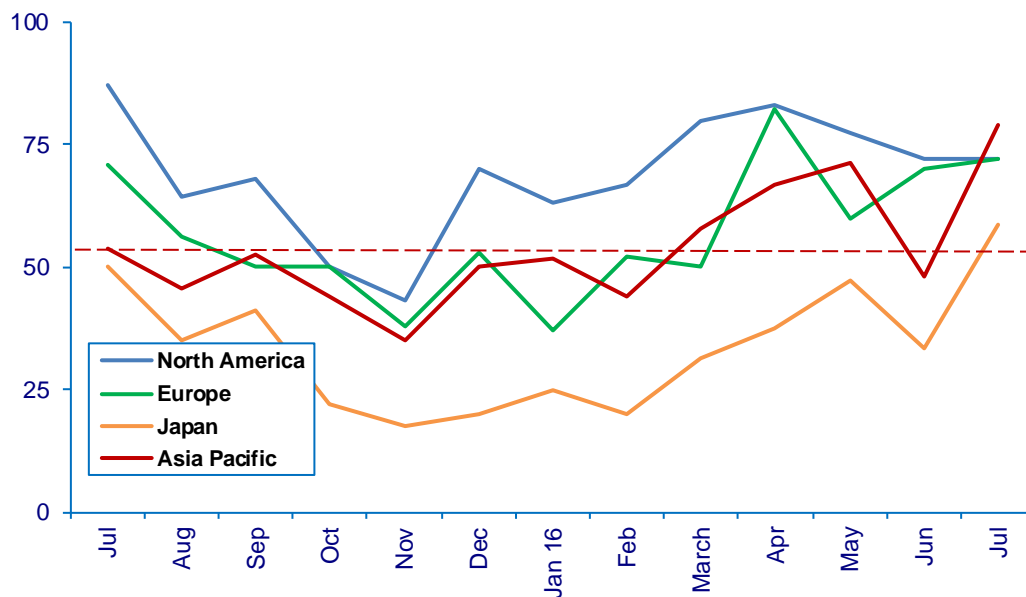
Present Situation Index – 70.8

	Jan	Feb	Mar	Apr	May	Jun	Jul	Confidence Level	Confidence Trend
North America	63.2	66.7	80.0	83.3	77.3	72.2	72.2	+	Same
Europe	37.0	52.2	50.0	82.4	60.0	70.0	72.2	+	↑
Japan	25.0	20.0	31.3	37.5	47.4	33.3	58.8	+	↑
Asia	51.7	44.0	64.7	66.7	71.4	48.0	78.9	+	↑
World	45.1	46.1	58.0	71.0	64.6	56.4	70.8	+	↑
Confidence	-	-	+	+	+	+	+		
Trend		↑	↑	↑	↓	↓	↑		

All regions are positive and up, except North America which is the same as last month.

Present Situation Index

>50.0 = Positive



Future Expectations

Industry personnel were asked, "What is your expectation of future business conditions six months from now (positive, negative, or neutral)?"

Future Expectations Index – 83.3

Region	Jan	Feb	Mar	Apr	May	Jun	Jul	Confidence Level	Confidence Trend
North America	62.1	81.8	85.7	85.7	88.0	86.4	89.5	+	↑
Europe	61.5	52.0	76.2	88.2	82.4	78.9	93.8	+	↑
Japan	35.3	35.0	52.9	62.5	68.8	56.3	71.4	+	↑
Asia	58.6	59.3	76.2	77.8	72.7	69.2	78.3	+	↑
World	56.4	57.4	73.8	81.3	78.8	74.4	83.3	+	↑
Confidence	+	+	+	+	+	+	+		
Trend	↑	↑	↑	↑	↓	↓	↑		

All regions are up and remain positive about the future. We believe this is a strong indicator that business is improving, and the industry will have a good second half.

Future Expectations Index (>50.0 = Positive)

