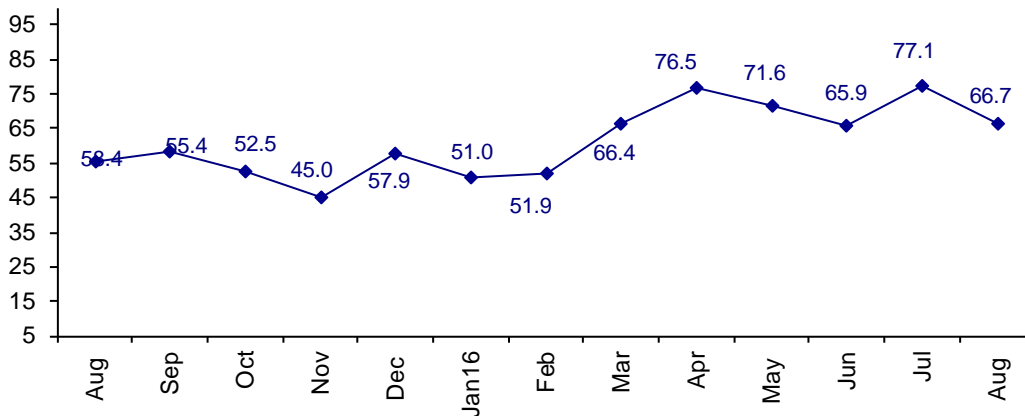


Japan Drops Dramatically In Confidence

The August Connector Confidence Index is 66.7 down from July at 77.1.

World Connector Confidence Index (WCCI)
>50.0 = Positive



The **World Connector Confidence Index (WCCI)** is the average of all responses for “present situation,” and “future expectations.”

Present Business Expectations

Industry personnel were asked, "What is your appraisal of current business conditions (positive, negative, neutral)?"

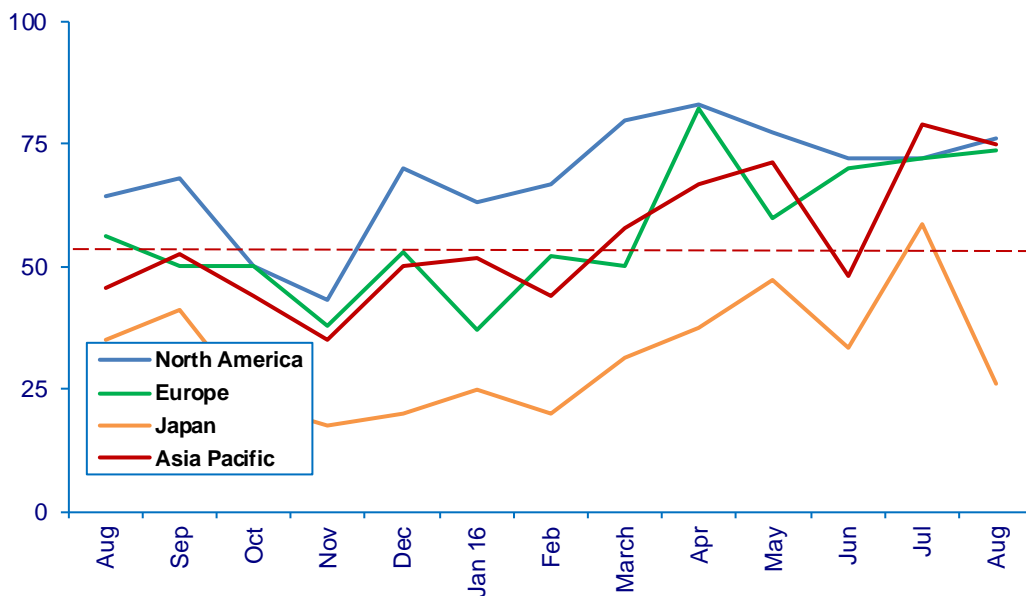
Present Situation Index – 63.9

	Feb	Mar	Apr	May	Jun	Jul	Aug	Confidence Level	Confidence Trend
North America	66.7	80.0	83.3	77.3	72.2	72.2	76.2	+	↑
Europe	52.2	50.0	82.4	60.0	70.0	72.2	73.7	+	↑
Japan	20.0	31.3	37.5	47.4	33.3	58.8	26.3	-	↓
Asia	44.0	64.7	66.7	71.4	48.0	78.9	75.0	+	↓
World	46.1	58.0	71.0	64.6	56.4	70.8	63.9	+	↓
Confidence	-	+	+	+	+	+	+		
Trend		↑	↑	↓	↓	↑	↓		

Japan dropped dramatically from July. Both North America and Europe are up and positive about present business conditions. Asia remains positive but lower than July.

Present Situation Index

>50.0 = Positive



Future Expectations

Industry personnel were asked, "What is your expectation of future business conditions six months from now (positive, negative, or neutral)?"

Future Expectations Index – 69.1

Region	Feb	Mar	Apr	May	Jun	Jul	Aug	Confidence Level	Confidence Trend
North America	81.8	85.7	85.7	88.0	86.4	89.5	80.8	+	↓
Europe	52.0	76.2	88.2	82.4	78.9	93.8	76.0	+	↓
Japan	35.0	52.9	62.5	68.8	56.3	71.4	42.1	-	↓
Asia	59.3	76.2	77.8	72.7	69.2	78.3	70.4	+	↓
World	57.4	73.8	81.3	78.8	74.4	83.3	69.1	+	↓
Confidence	+	+	+	+	+	+	+		
Trend		↑	↑	↓	↓	↑	↓		

All regions are down in confidence about the future, but three of the four regions are positive about future business conditions. Japan had another dramatic drop.

Future Expectations Index

(>50.0 = Positive)

