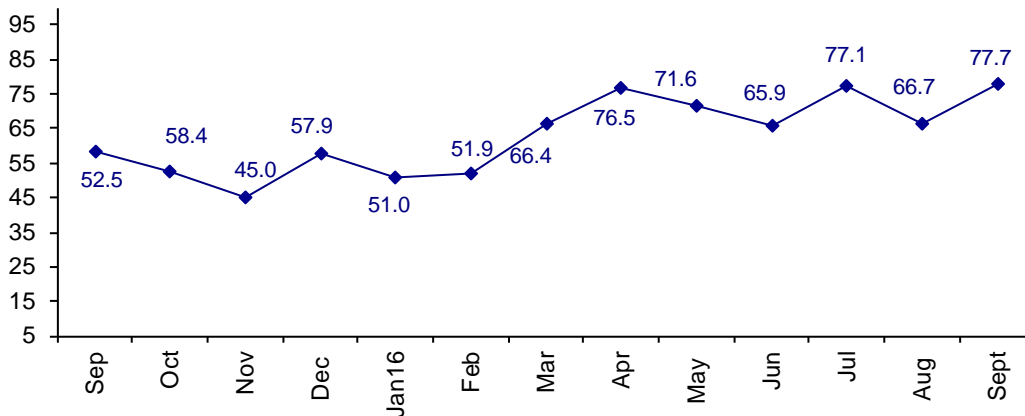


Future Confidence Rises in All Regions Expect Growth in 4th Quarter

The September Connector Confidence Index is 77.7 up from August at 66.7.

World Connector Confidence Index (WCCI)
>50.0 = Positive



The **World Connector Confidence Index (WCCI)** is the average of all responses for “present situation,” and “future expectations.”

Present Business Expectations

Industry personnel were asked, "What is your appraisal of current business conditions (positive, negative, neutral)?"

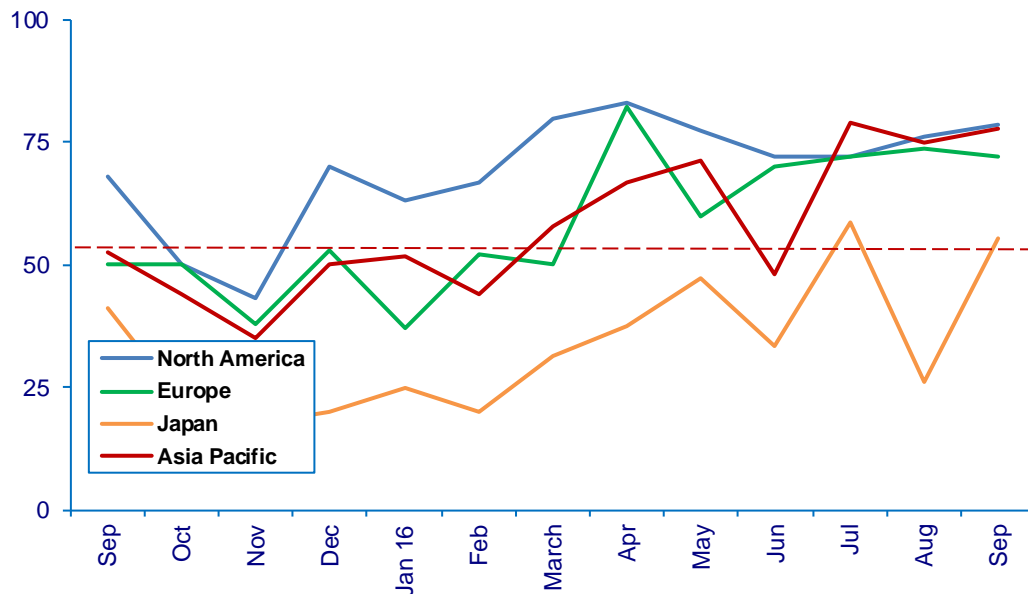
Present Situation Index – 63.9

	Mar	Apr	May	Jun	Jul	Aug	Sept	Confidence Level	Confidence Trend
North America	80.0	83.3	77.3	72.2	72.2	76.2	78.6	+	↑
Europe	50.0	82.4	60.0	70.0	72.2	73.7	72.3	+	↓
Japan	31.3	37.5	47.4	33.3	58.8	26.3	55.6	+	↑
Asia	64.7	66.7	71.4	48.0	78.9	75.0	77.8	+	↑
World	58.0	71.0	64.6	56.4	70.8	63.9	73.6	+	↑
Confidence	+	+	+	+	+	+	+		
Trend		↑	↓	↓	↑	↓	↑		

Japan move dramatically up from August. All regions are positive about present business conditions. Europe is the only region that dropped, but only slightly.

Present Situation Index

>50.0 = Positive



Future Expectations

Industry personnel were asked, "What is your expectation of future business conditions six months from now (positive, negative, or neutral)?"

Future Expectations Index – 69.1

Region	Mar	Apr	May	Jun	Jul	Aug	Sept	Confidence Level	Confidence Trend
North America	85.7	85.7	88.0	86.4	89.5	80.8	90.5	+	↑
Europe	76.2	88.2	82.4	78.9	93.8	76.0	80.0	+	↑
Japan	52.9	62.5	68.8	56.3	71.4	42.1	66.7	+	↑
Asia	76.2	77.8	72.7	69.2	78.3	70.4	90.9	+	↑
World	73.8	81.3	78.8	74.4	83.3	69.1	83.8	+	
Confidence	+	+	+	+	+	+	+		
Trend		↑	↓	↓	↑	↓	↑		

All regions are up and positive in confidence about the future. Japan had another dramatic up.

Future Expectations Index
(>50.0 = Positive)

