

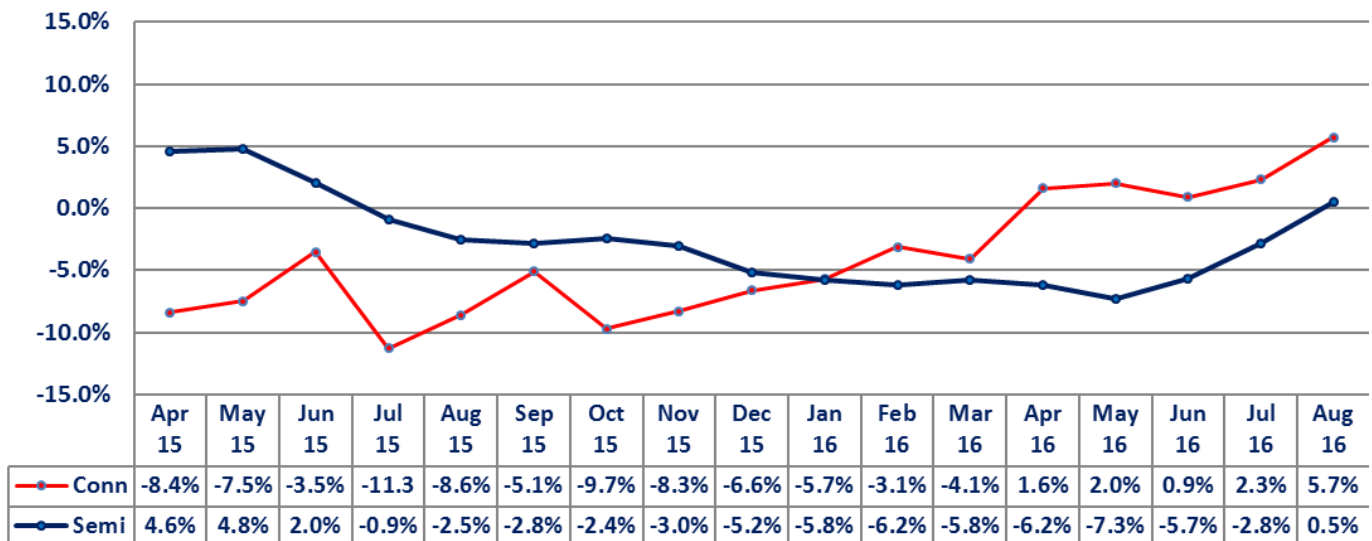
## August Semi Sales Gain +0.5% YOY Breaking Negative Streak Largest Sequential Gain Since May 2013

The Semiconductor Industry Association (SIA) reported August sales of \$28.0 billion, up +0.5% from August 2015 and up +3.5% sequentially from July. Regionally for August, the SIA reported that China grew +7.1% YOY and Japan grew +2.2%. The other regions had YOY declines in sales: -3.1% in the Americas, -3.3% in Europe and Asia Pacific/Other declined -2.7%.

The connector industry sales, measured in U.S. dollars, increased +5.7% to prior year in August and grew +12.2% sequentially. Regionally for August, YOY sales increased +5.7% in North America, +3.8% in Europe, +12.7% in China and +16.9% in ROW. YOY sales declined -3.4% in Japan and -0.3% in Asia Pacific.

The following graph compares semiconductor sales performance to the connector industry.

Monthly Sales Performance  
Year-Over-Year



- The August increase broke the 13 month run of YOY declines for semiconductors sales. Connectors contracted for 15 consecutive months before growth returned in April 2016.
- Connectors outperformed semis for the eighth straight month.

The following table displays year-to-date performance, measured in U.S. dollars, by geographic region for both components.

**Sales Performance  
August Year-To-Date**

	Semiconductors	Connectors
<b>North America</b>	<b>-13.0%</b>	<b>1.1%</b>
<b>Europe</b>	<b>-7.0%</b>	<b>3.8%</b>
<b>Japan</b>	<b>-0.5%</b>	<b>-21.6%</b>
<b>China</b>	<b>NA</b>	<b>4.6%</b>
<b>Asia Pacific*</b>	<b>-2.4%</b>	<b>-6.9%</b>
<b>World</b>	<b>-4.9%</b>	<b>-0.1%</b>

\* Including China for SIA, Source SIA & Bishop

The differences in the regional YTD numbers still do not make sense, historically speaking. The world YTD total of -4.9% for semis and -0.1% for connectors is more the normal delta between the two components. Both components are definitely showing YTD improvements in their sales performance.

Connectors are trending toward better performance since November 2015 and will likely be in positive YTD growth mode by the end of September. Semis have trended up for the last three months. Their YTD performance may turn positive by the end of 2016 if this trend continues.