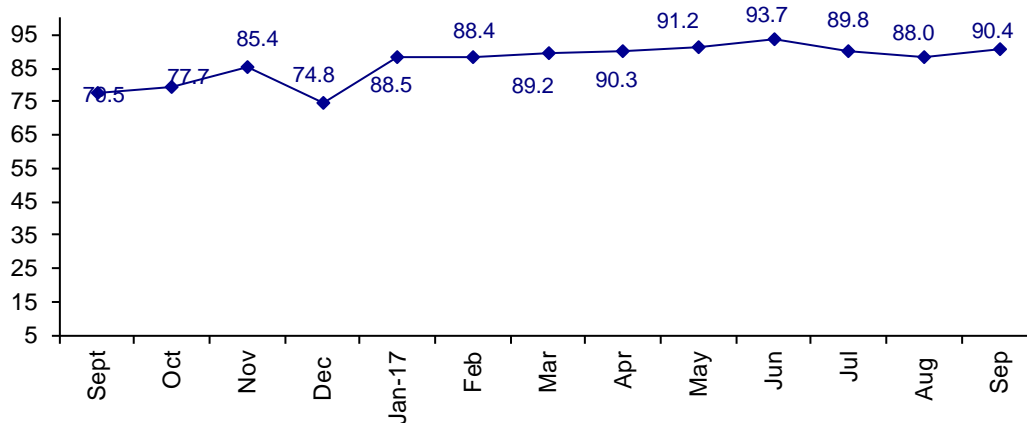


Business Is Good And Confidence is High

The September Confidence Index is 90.4 up from the August Confidence Index of 88.0. This is the first month that we have included China as a separate region.

World Connector Confidence Index (WCCI)
>50.0 = Positive



The **World Connector Confidence Index (WCCI)** is the average of all responses for “present situation,” and “future expectations.”

Present Business Expectations

Industry personnel were asked, "What is your appraisal of current business conditions (positive, negative, neutral)?"

Present Situation Index – 91.5

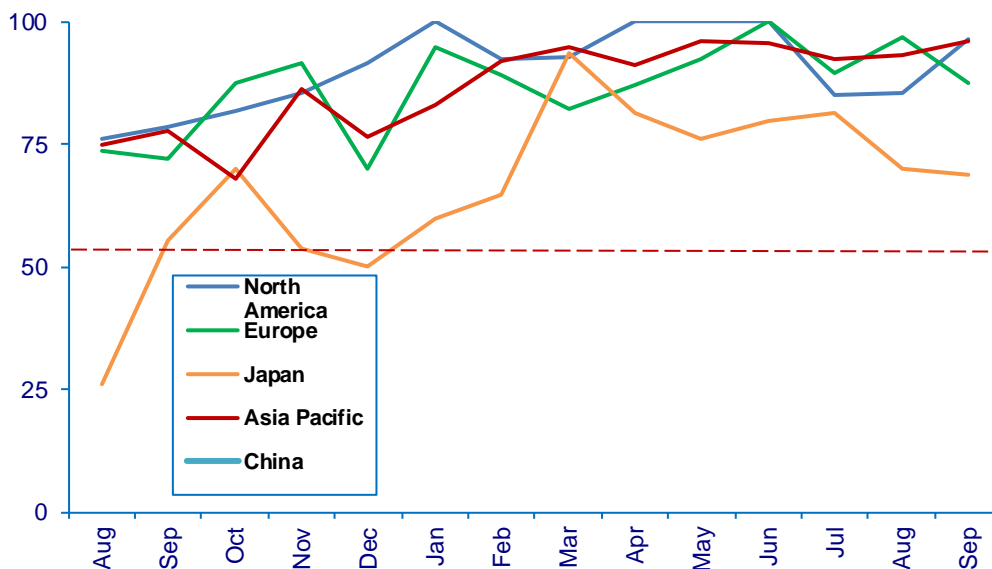
	Apr	May	Jun	Jul	Aug	Sep	Confidence Level	Confidence Trend
North America	100.0	100.0	100.0	85.2	85.7	96.6	+	↑
Europe	87.0	92.3	100.0	89.7	97.0	87.5	+	↓
Japan	89.5	76.2	80.0	81.3	70.0	68.8	+	↓
Asia	92.6	96.2	95.8	92.3	93.1	96.3	+	↑
China						100.0	+	
World	92.1	91.6	94.3	87.8	88.2	91.5	+	↑
Confidence	+	+	+	+	+	+		
Trend		↓	↑	↓	↑	↑		

Japan dropped in confidence again, and Europe after rising sharply in August, dropped in confidence.

Present Situation Index

>50.0 = Positive

Note: This is the first month for China, therefore there is no history for this region.



Future Expectations

Industry personnel were asked, "What is your expectation of future business conditions six months from now (positive, negative, or neutral)?"

Future Expectations Index – 89.2

Region	Apr	May	Jun	Jul	Aug	Sep	Confidence Level	Confidence Trend
North America	96.3	95.8	100.0	88.9	86.2	89.3	+	↑
Europe	81.0	88.5	95.7	95.8	100.0	90.3	+	↓
Japan	81.3	81.0	81.3	86.7	68.8	60.0	+	↓
Asia	91.3	96.2	95.5	95.7	86.7	95.7	+	↑
China						95.8	+	
World	88.5	90.7	93.0	92.1	87.9	89.2	+	↑
Confidence	+	+	+	+	+	+		
Trend		↑	↑	↓	↓	↑		

Japan and Europe dropped in confidence about future expectations. All regions have a positive confidence level.

