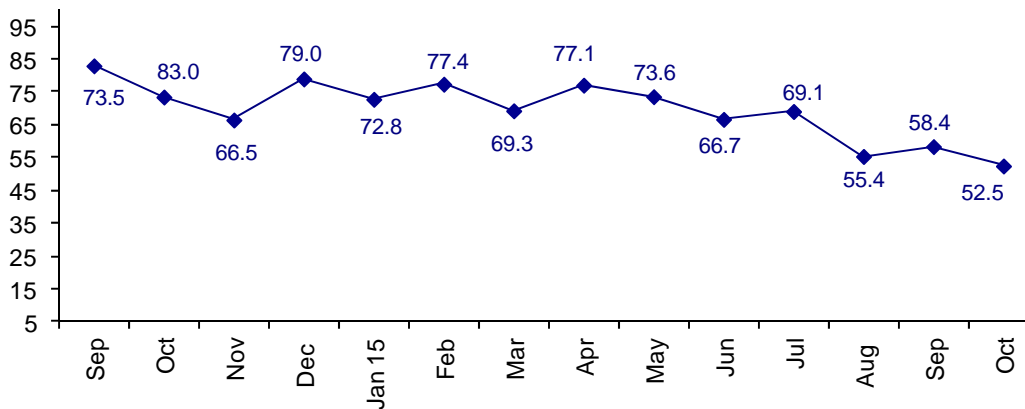


## Confidence Moves Down In October

The October Connector Confidence Index is 52.5 down from September at 58.4.

**World Connector Confidence Index (WCCI)**  
**>50.0 = Positive**



The **World Connector Confidence Index (WCCI)** is the average of all responses for “present situation,” and “future expectations.”

## Present Business Expectations

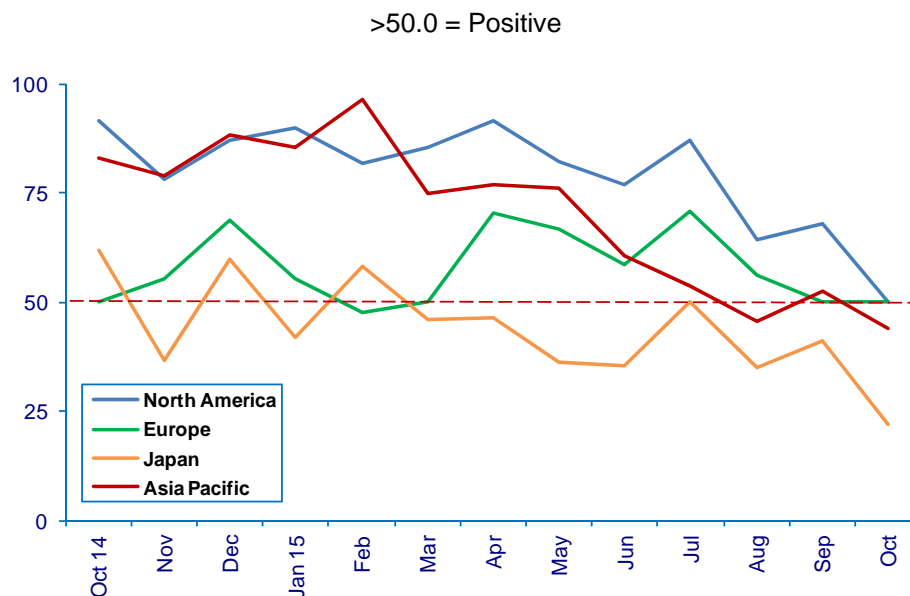
Industry personnel were asked, "What is your appraisal of current business conditions (positive, negative, neutral)?"

### Present Situation Index

Region	May	Jun	Jul	Aug	Sep	Sep	Oct	Confidence Level	Confidence Trend
North America	79.4	74.2	66.7	78.6	75.9	75.9	50.0	Neutral	↓
Europe	64.0	54.5	36.4	63.0	61.3	61.3	50.0	Neutral	↓
Japan	52.0	54.2	52.6	50.0	35.0	35.0	22.2	-	↓
Asia	83.3	76.9	67.7	62.5	36.7	36.7	44.0	-	↑
<b>World</b>	<b>71.1</b>	<b>66.1</b>	<b>55.7</b>	<b>65.0</b>	<b>53.6</b>	<b>53.6</b>	<b>43.0</b>	<b>-</b>	<b>↓</b>
<b>Confidence</b>		+	+	+	+	N	-		
<b>Trend</b>		↓	↓	↑	↓	↑	↓		

Europe and North America are at Neutral. Japan is negative and down in confidence. Asia is also negative, but up from September.

### Present Situation Index



## Future Expectations

Industry personnel were asked, "What is your expectation of future business conditions six months from now (positive, negative, or neutral)?"

### Future Expectations Index

Region	Apr	May	Jun	Jul	Aug	Sep	Oct	Confidence Level	Confidence Trend
North America	92.6	82.8	86.2	92.3	68.8	81.0	72.0	+	↓
Europe	83.3	70.8	66.7	79.2	65.8	66.7	70.4	+	↑
Japan	56.3	50.0	53.8	52.6	47.6	38.9	38.5	-	↓
Asia	77.8	87.5	73.1	61.5	46.7	63.2	57.1	+	↓
<b>World</b>	<b>80.0</b>	<b>76.4</b>	<b>72.4</b>	<b>72.6</b>	<b>58.7</b>	<b>63.2</b>	<b>62.8</b>	<b>+</b>	<b>↓</b>
<b>Confidence</b>		+	+	+	+	+	+		
<b>Trend</b>		↓	↓	↓	↓	↑	↓		

All regions are down in future expectations except Europe. All regions are positive, except Japan.

### Future Expectations Index

(>50.0 = Positive)

