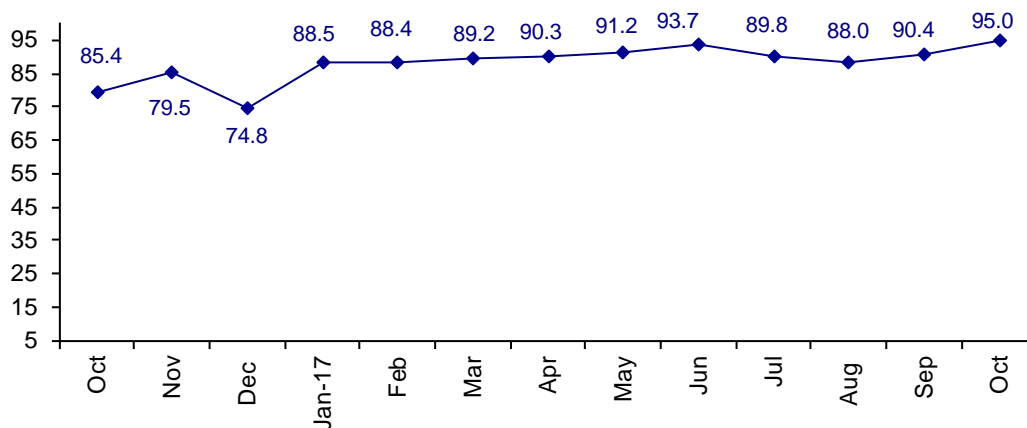


Connector Demand Strong And Confidence Rising

The October Confidence Index is 95.0 up from September at 90.4.

World Connector Confidence Index (WCCI)
>50.0 = Positive



The **World Connector Confidence Index (WCCI)** is the average of all responses for “present situation,” and “future expectations.”

Present Business Expectations

Industry personnel were asked, "What is your appraisal of current business conditions (positive, negative, neutral)?"

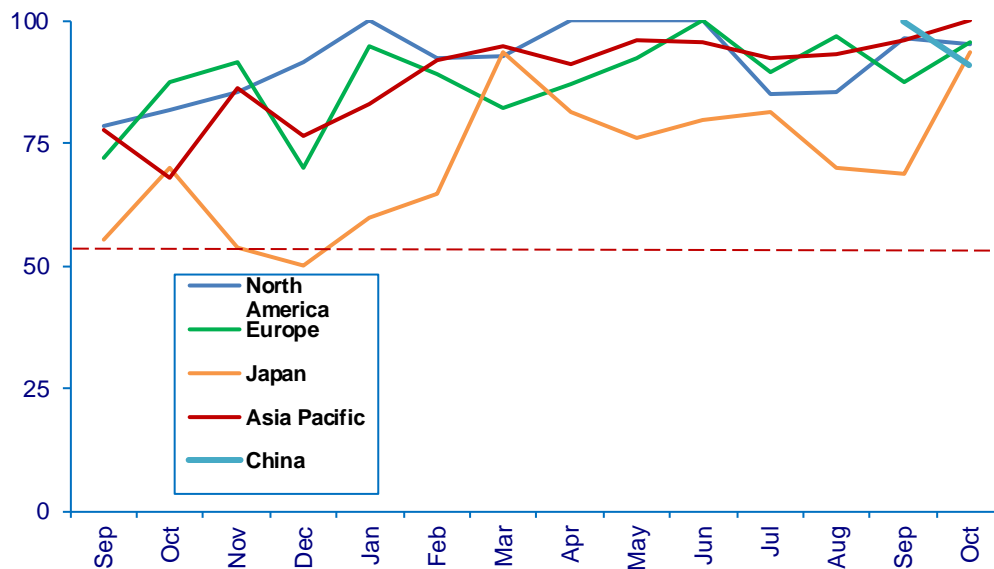
Present Situation Index – 95.2

	May	Jun	Jul	Aug	Sep	Oct	Confidence Level	Confidence Trend
North America	100.0	100.0	85.2	85.7	96.6	95.5	+	↓
Europe	92.3	100.0	89.7	97.0	87.5	95.8	+	↑
Japan	76.2	80.0	81.3	70.0	68.8	93.6	+	↑
Asia	96.2	95.8	92.3	93.1	96.3	100.0	+	↑
China					100.0	90.9	+	↓
World	91.6	94.3	87.8	88.2	91.5	95.2	+	↑
Confidence		+	+	+	+	+		
Trend		↑	↓	↑	↑	↑		

Japan rose dramatically in confidence, as China dropped in confidence. Asia is extremely confident about present conditions.

Present Situation Index

>50.0 = Positive



Future Expectations

Industry personnel were asked, "What is your expectation of future business conditions six months from now (positive, negative, or neutral)?"

Future Expectations Index – 94.8

Region	May	Jun	Jul	Aug	Sep	Oct	Confidence Level	Confidence Trend
North America	95.8	100.0	88.9	86.2	89.3	95.7	+	↑
Europe	88.5	95.7	95.8	100.0	90.3	95.8	+	↑
Japan	81.0	81.3	86.7	68.8	60.0	92.3	+	↑
Asia	96.2	95.5	95.7	86.7	95.7	100.0	+	↑
China					95.8	90.0	+	↓
World	90.7	93.0	92.1	87.9	89.2	94.8	+	↑
Confidence	+	+	+	+	+	+		
Trend		↑	↓	↓	↑	↑		

China is the only region that dropped in confidence about future expectations. All regions have a positive confidence level.

Future Expectations Index

(>50.0 = Positive)

