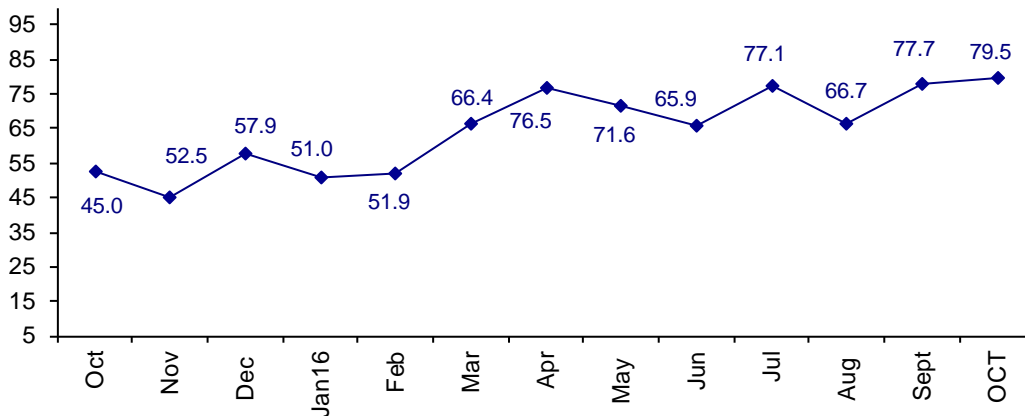


Connector Demand Improves And Confidence Increases

The October Connector Confidence Index is 79.5 up from September 77.7 and up from August at 66.7.

World Connector Confidence Index (WCCI)
>50.0 = Positive



The **World Connector Confidence Index (WCCI)** is the average of all responses for “present situation,” and “future expectations.”

Present Business Expectations

Industry personnel were asked, "What is your appraisal of current business conditions (positive, negative, neutral)?"

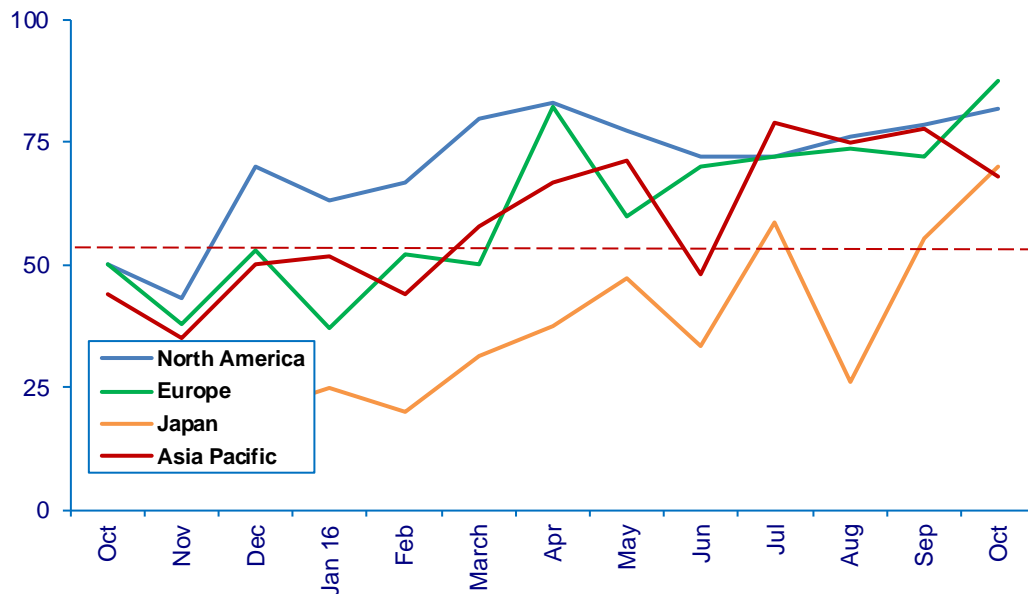
Present Situation Index – 77.1

	Apr	May	Jun	Jul	Aug	Sept	Oct	Confidence Level	Confidence Trend
North America	83.3	77.3	72.2	72.2	76.2	78.6	81.8	+	↑
Europe	82.4	60.0	70.0	72.2	73.7	72.3	87.5	+	↑
Japan	37.5	47.4	33.3	58.8	26.3	55.6	70.0	+	↑
Asia	66.7	71.4	48.0	78.9	75.0	77.8	68.2	+	↓
World	71.0	64.6	56.4	70.8	63.9	73.6	77.1	+	↑
Confidence	+	+	+	+	+	+	+		
Trend		↓	↓	↑	↓	↑	↑		

All regions are positive about present business conditions. Asia is the only region that dropped in confidence. Japan moved up dramatically in confidence in October.

Present Situation Index

>50.0 = Positive



Future Expectations

Industry personnel were asked, "What is your expectation of future business conditions six months from now (positive, negative, or neutral)?"

Future Expectations Index – 81.6

Region	Apr	May	Jun	Jul	Aug	Sept	Oct	Confidence Level	Confidence Trend
North America	85.7	88.0	86.4	89.5	80.8	90.5	90.9	+	↑
Europe	88.2	82.4	78.9	93.8	76.0	80.0	86.4	+	↑
Japan	62.5	68.8	56.3	71.4	42.1	66.7	70.0	+	↑
Asia	77.8	72.7	69.2	78.3	70.4	90.9	72.7	+	↓
World	81.3	78.8	74.4	83.3	69.1	83.8	81.6	+	↓
Confidence	+	+	+	+	+	+	+		
Trend		↓	↓	↑	↓	↑	↓		

All regions are positive about future confidence, and all regions except Asia, are up in confidence about the future.

Future Expectations Index (>50.0 = Positive)

