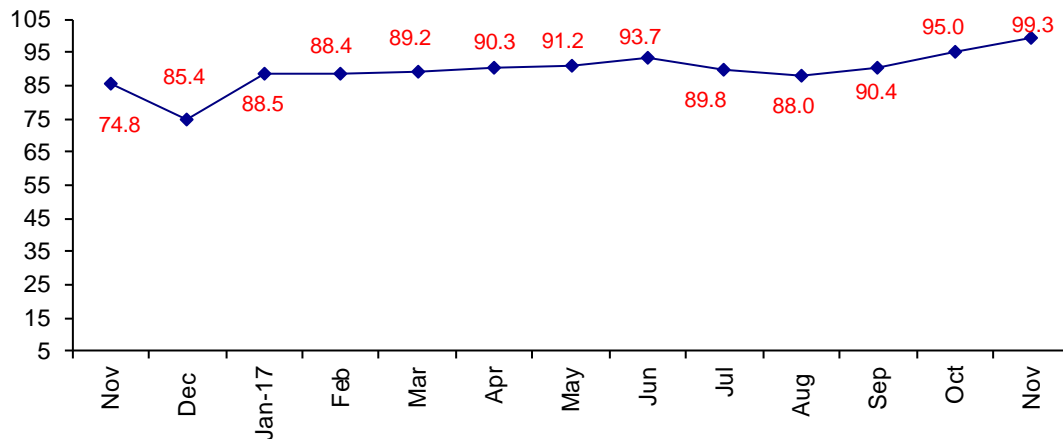


Demand is Strong, Economy Is Improving, Confidence High

The November Confidence Index is 99.3 up from October at 95.0.

World Connector Confidence Index (WCCI)
>50.0 = Positive



The **World Connector Confidence Index (WCCI)** is the average of all responses for “present situation,” and “future expectations.”

Present Business Expectations

Industry personnel were asked, "What is your appraisal of current business conditions (positive, negative, neutral)?"

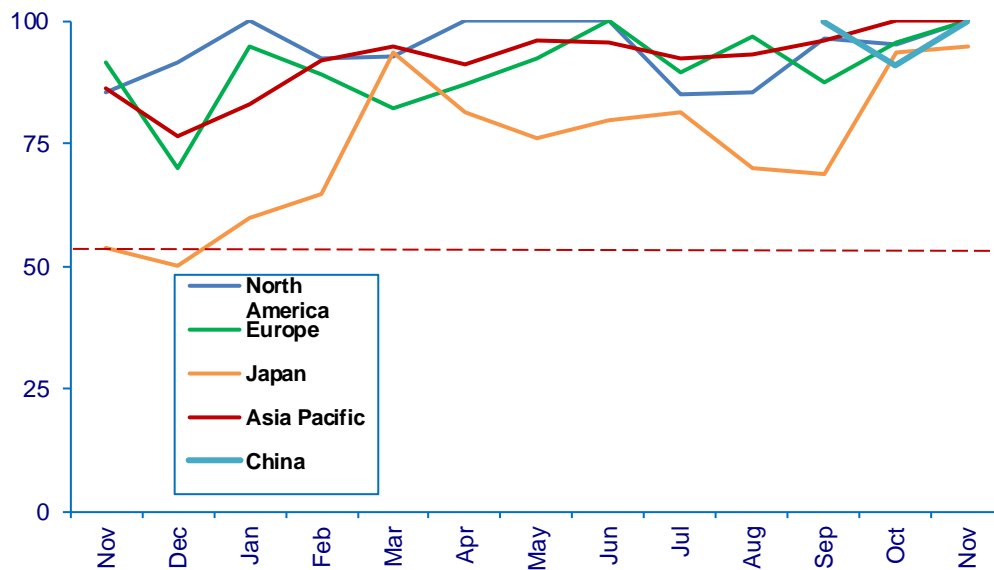
Present Situation Index – 99.3

	Jun	Jul	Aug	Sep	Oct	Nov	Confidence Level	Confidence Trend
North America	100.0	85.2	85.7	96.6	95.5	100.0	+	↑
Europe	100.0	89.7	97.0	87.5	95.8	100.0	+	↑
Japan	80.0	81.3	70.0	68.8	93.6	94.7	+	↑
Asia	95.8	92.3	93.1	96.3	100.0	100.0	+	Same
China				100.0	90.9	100.0	+	↑
World	94.3	87.8	88.2	91.5	95.2	99.3	+	↑
Confidence	+	+	+	+	+	+		
Trend		↓	↓	↑	↑	↑		

Japan is the only region not at 100%.

Present Situation Index

>50.0 = Positive



Future Expectations

Industry personnel were asked, "What is your expectation of future business conditions six months from now (positive, negative, or neutral)?"

Future Expectations Index – 99.3

Region	Jun	Jul	Aug	Sep	Oct	Nov	Confidence Level	Confidence Trend
North America	100.0	88.9	86.2	89.3	95.7	96.7	+	↑
Europe	95.7	95.8	100.0	90.3	95.8	100.0	+	↑
Japan	81.3	86.7	68.8	60.0	92.3	100.0	+	↑
Asia	95.5	95.7	86.7	95.7	100.0	97.0	+	↓
China				95.8	90.0	100.0	+	↑
World	93.0	92.1	87.9	89.2	94.8	99.3	+	↑
Confidence	+	+	+	+	+	+		
Trend		↓	↓	↑	↑	↑		

Asia is the only region that dropped in confidence about future expectations. All regions have a positive confidence level.

