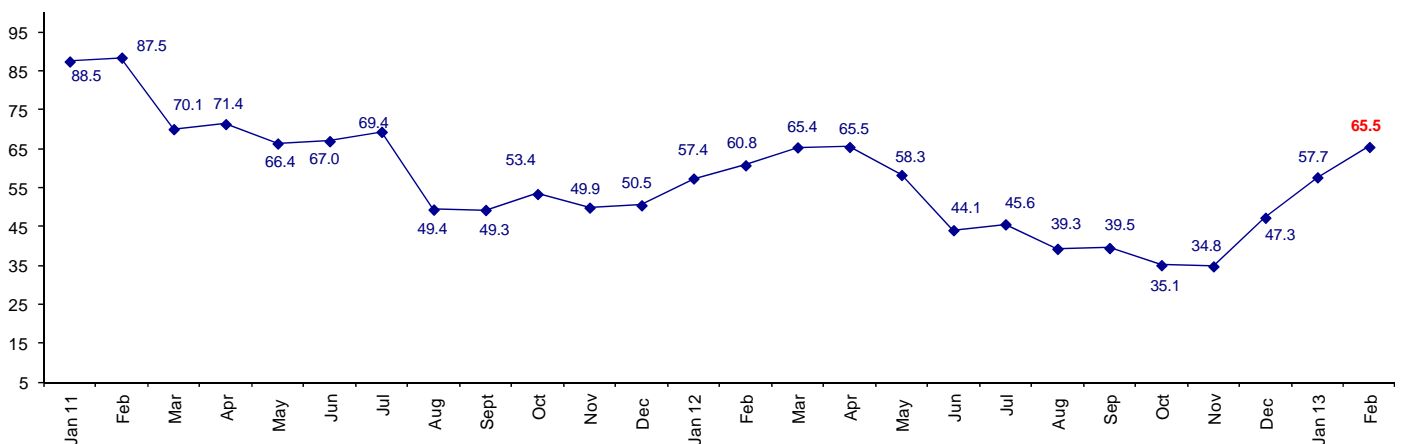


Connector Confidence in Positive Territory For Second Month

The February Connector Confidence Index is 65.5 up from at January 57.7.

World Connector Confidence Index (WCCI) >50.0 = Positive



The **World Connector Confidence Index (WCCI)** is the average of all responses for “present situation,” and “future expectations.”

Present Business Expectations

Industry personnel were asked, "What is your appraisal of current business conditions (positive, negative, neutral)?"

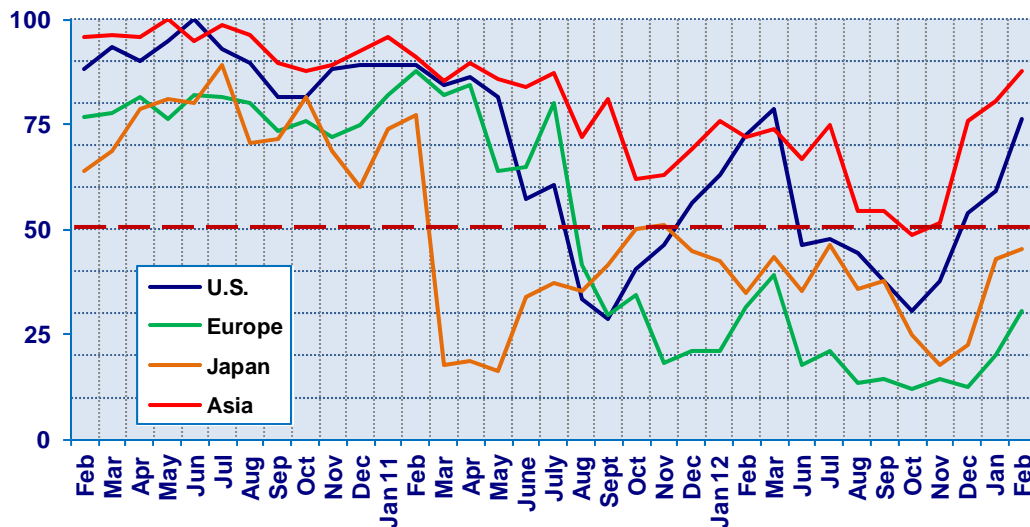
Present Situation Index

Region	2012						2013		Confidence/ Trend
	Jul	Aug	Sept	Oct	Nov	Dec	Jan	Feb	
North America	47.5	44.4	37.5	30.6	37.5	53.8	59.3	76.3	Positive - Up
Europe	21.1	13.2	14.5	12.0	14.6	12.5	20.0	30.4	Negative - Up
Japan	46.2	35.7	37.9	25.0	17.9	22.7	42.9	45.5	Negative - Up
Asia	75.0	54.3	54.2	48.5	51.4	75.9	80.6	87.5	Positive - Up
World	45.6	35.6	34.9	27.2	29.8	39.3	50.4	60.3	Positive - Up

Confidence Neg Neg Neg Neg Neg Pos Pos
Trend Down Down Down Up Up Up Up

Although Europe and Japan still are negative about the present, they moved up in confidence. The U.S. is positive about present business conditions for the third time since July 2012.

Present Situation Index >50.0 = Positive



Future Expectations

Industry personnel were asked, "What is your expectation of future business conditions six months from now (positive, negative, neutral?)

Future Expectations Index

Region	2012						2013		Confidence/ Trend
	Jul	Aug	Sept	Oct	Nov	Dec	Jan	Feb	
North America	36.6	51.1	52.2	51.3	48.9	65.4	75.0	85.0	Positive - Up
Europe	30.8	20.8	23.5	28.0	17.4	28.2	35.5	43.5	Negative - Up
Japan	53.8	41.4	43.9	33.3	34.5	44.0	58.8	64.0	Positive - Up
Asia	68.3	58.3	56.6	59.0	57.5	85.3	90.0	92.3	Positive - Up
World	45.6	42.9	44.0	42.4	39.5	54.8	65.1	70.7	Positive - Up

Confidence Neg Neg Neg Neg Pos Pos Pos
Trend Down Up Down Down Up Up Up

All regions are up in future expectations, although Europe still remains negative about the future.

Future Expectations Index

(>50.0 = Positive)

