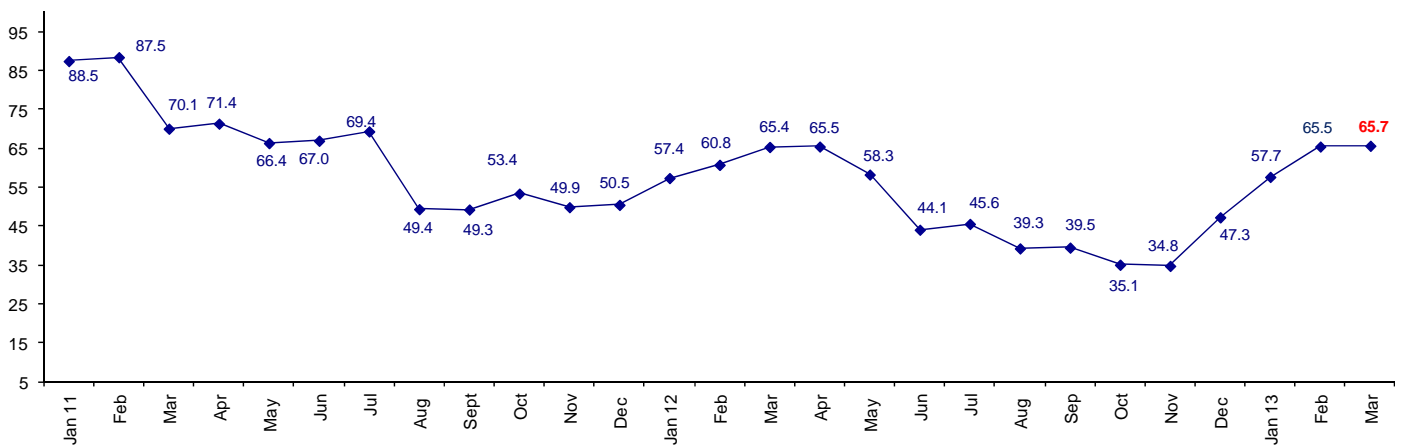


## Connector Confidence in Positive Territory Third Consecutive Month

The March Connector Confidence Index is 65.7, making the third consecutive month in positive territory, and the fifth month the confidence level has increased.

## World Connector Confidence Index (WCCI) >50.0 = Positive



The **World Connector Confidence Index (WCCI)** is the average of all responses for “present situation,” and “future expectations.”

## Present Business Expectations

Industry personnel were asked, "What is your appraisal of current business conditions (positive, negative, neutral)?"

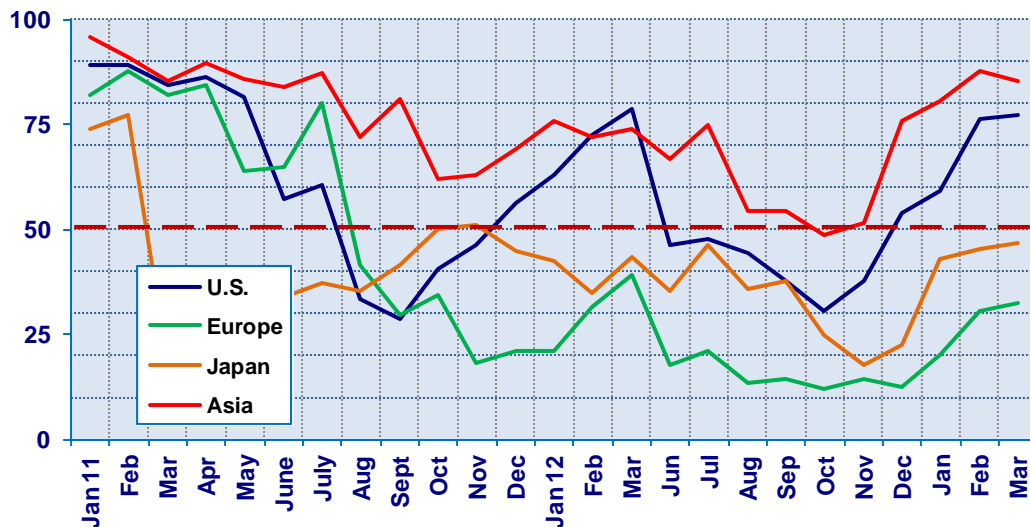
### Present Situation Index

Region	2012					2013			Confidence/ Trend
	Aug	Sept	Oct	Nov	Dec	Jan	Feb	Mar	
North America	44.4	37.5	30.6	37.5	53.8	59.3	76.3	77.4	Positive - Up
Europe	13.2	14.5	12.0	14.6	12.5	20.0	30.4	32.4	Negative - Up
Japan	35.7	37.9	25.0	17.9	22.7	42.9	45.5	46.7	Negative - Up
Asia	54.3	54.2	48.5	51.4	75.9	80.6	87.5	85.2	Positive - Dw
<b>World</b>	<b>35.6</b>	<b>34.9</b>	<b>27.2</b>	<b>29.8</b>	<b>39.3</b>	<b>50.4</b>	<b>60.3</b>	<b>60.7</b>	<b>Positive - Up</b>

Confidence                      Neg    Neg    Neg    Neg    Pos    Pos    Pos  
Trend                              Down Down Up    Up    Up    Up    Up

The U.S. and Asia are still the two regions that remain positive about present business conditions.

### Present Situation Index >50.0 = Positive



## Future Expectations

Industry personnel were asked, "What is your expectation of future business conditions six months from now (positive, negative, neutral?)"

### Future Expectations Index

Region	2012					2013			Confidence/ Trend
	Aug	Sept	Oct	Nov	Dec	Jan	Feb	Mar	
North America	51.1	52.2	51.3	48.9	65.4	75.0	85.0	83.9	Positive - Dn
Europe	20.8	23.5	28.0	17.4	28.2	35.5	43.5	37.0	Negative - Dn
Japan	41.4	43.9	33.3	34.5	44.0	58.8	64.0	71.4	Positive - Up
Asia	58.3	56.6	59.0	57.5	85.3	90.0	92.3	89.3	Positive - Dn
<b>World</b>	<b>42.9</b>	<b>44.0</b>	<b>42.4</b>	<b>39.5</b>	<b>54.8</b>	<b>65.1</b>	<b>70.7</b>	<b>71.0</b>	<b>Positive - Up</b>

Confidence Trend      Neg Up    Neg Down    Neg Down    Pos Up    Pos Up    Pos Up    Pos Up

North America, Japan and Asia are still in the positive range, but Asia and North America are slightly down from February. Europe is still negative and is slightly more negative than in February.

### Future Expectations Index

(>50.0 = Positive)

