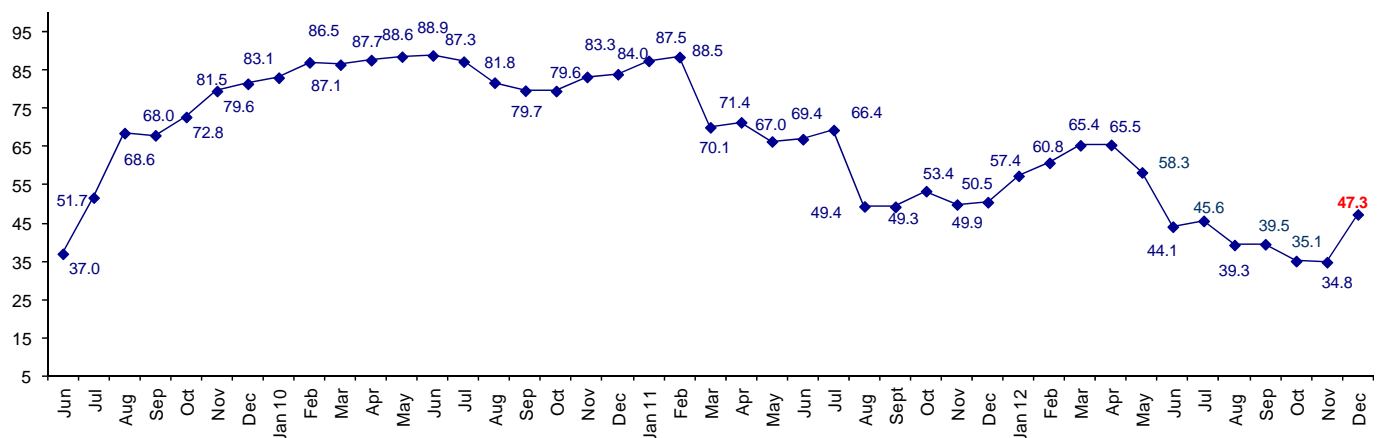


## Connector Confidence Negative For Seventh Consecutive Month

The December Connector Confidence Index is 47.3 up from November at 34.8. Confidence is positive in the U.S. and Asia. Japan and Europe are still low in confidence.

**World Connector Confidence Index (WCCI)**  
**>50.0 = Positive**



The Confidence Index has been negative for seven consecutive months.

The **World Connector Confidence Index (WCCI)** is the average of all responses for “present situation,” and “future expectations.”

## Present Business Expectations

Industry personnel were asked, "What is your appraisal of current business conditions (positive, negative, neutral)?"

### Present Situation Index

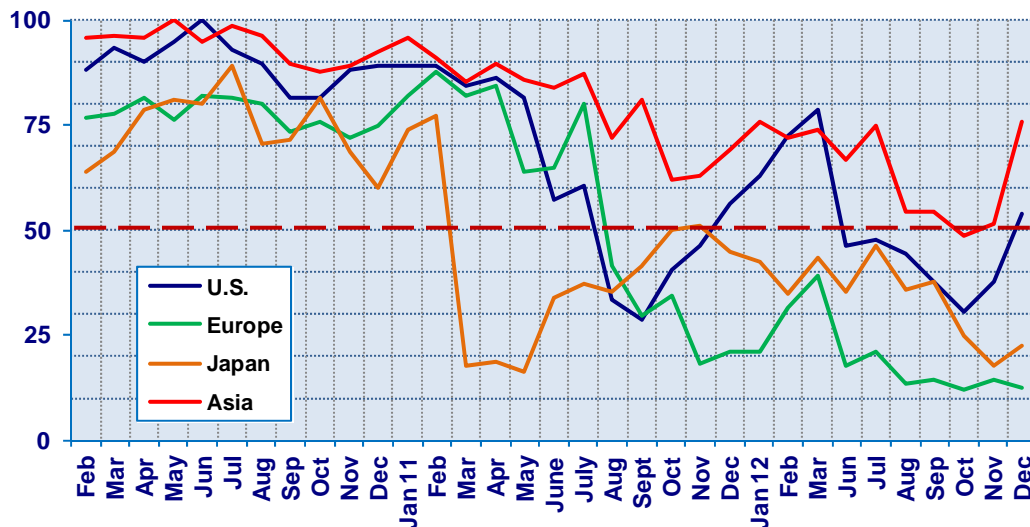
Region	2012								Confidence/ Trend
	May	Jun	Jul	Aug	Sept	Oct	Nov	Dec	
North America	65.6	46.2	47.5	44.4	37.5	30.6	37.5	53.8	Positive - Up
Europe	27.9	17.6	21.1	13.2	14.5	12.0	14.6	12.5	Negative - Down
Japan	52.3	35.3	46.2	35.7	37.9	25.0	17.9	22.7	Negative - Up
Asia	74.5	66.7	75.0	54.3	54.2	48.5	51.4	75.9	Positive - Up
<b>World</b>	<b>54.4</b>	<b>41.1</b>	<b>45.6</b>	<b>35.6</b>	<b>34.9</b>	<b>27.2</b>	<b>29.8</b>	<b>39.3</b>	<b>Negative - Up</b>

Confidence                      Neg    Neg    Neg    Neg    Neg    Neg    Neg  
Trend                                Down    Up    Down    Down    Down    Up    Up

All regions except Europe went up in confidence. The U.S. is positive about present business conditions for the first time in six months.

### Present Situation Index

>50.0 = Positive



## Future Expectations

Industry personnel were asked, "What is your expectation of future business conditions six months from now (positive, negative, neutral?)"

### Future Expectations Index

Region	May	Jun	Jul	Aug	Sept	Oct	Nov	Dec	Confidence/ Trend
North America	73.3	48.5	36.6	51.1	52.2	51.3	48.9	65.4	Positive - Up
Europe	39.4	25.0	30.8	20.8	23.5	28.0	17.4	28.2	Negative - Up
Japan	53.3	36.3	53.8	41.4	43.9	33.3	34.5	44.0	Negative - Up
Asia	81.0	72.7	68.3	58.3	56.6	59.0	57.5	85.3	Positive - Up
<b>World</b>	<b>62.1</b>	<b>46.7</b>	<b>45.6</b>	<b>42.9</b>	<b>44.0</b>	<b>42.4</b>	<b>39.5</b>	<b>54.8</b>	<b>Positive - Up</b>

Confidence                      Neg    Neg    Neg    Neg    Neg    Neg    Pos  
Trend                                Down Down Down    Up    Down Down    Up

All regions are up in future expectations. Asia and North America are positive about the future. Europe and Japan remain negative.

### Future Expectations Index

(>50.0 = Positive)

