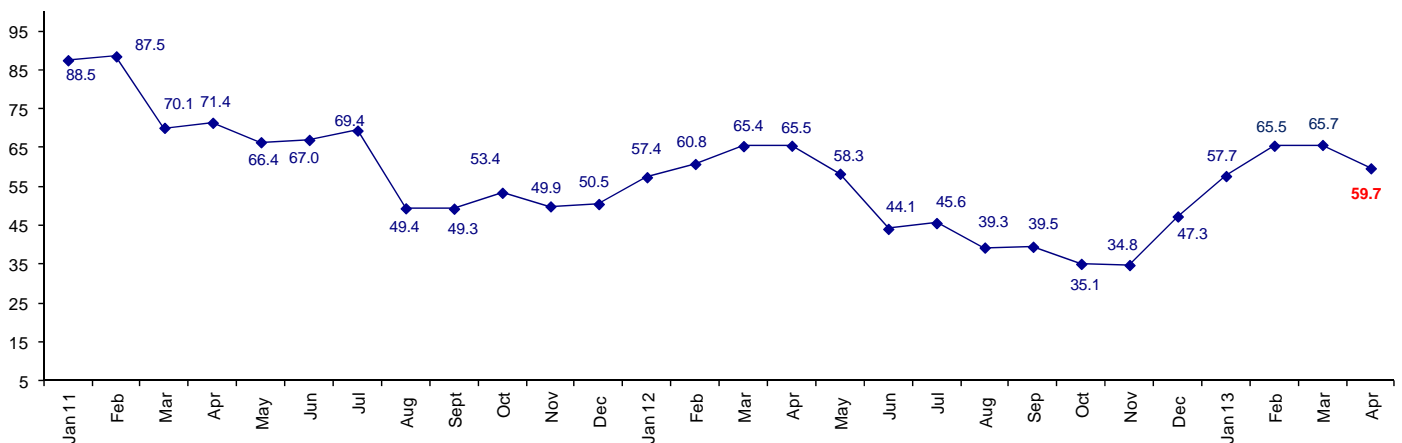


## Connector Confidence in Positive Territory Fourth Consecutive Month

The April Connector Confidence Index is 59.7. After four months in which confidence was increasing, April dropped modestly, but is still in confident territory.

## World Connector Confidence Index (WCCI) >50.0 = Positive



The **World Connector Confidence Index (WCCI)** is the average of all responses for “present situation,” and “future expectations.”

## Present Business Expectations

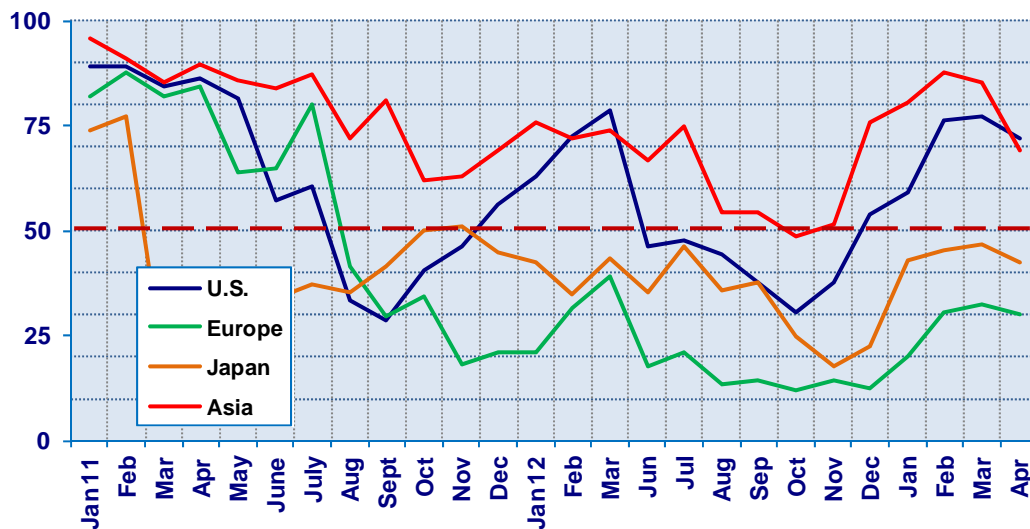
Industry personnel were asked, "What is your appraisal of current business conditions (positive, negative, neutral)?"

### Present Situation Index

Region	2012				2013				Confidence/ Trend
	Sept	Oct	Nov	Dec	Jan	Feb	Mar	Apr	
North America	37.5	30.6	37.5	53.8	59.3	76.3	77.4	72.1	Positive - Down
Europe	14.5	12.0	14.6	12.5	20.0	30.4	32.4	30.2	Negative - Down
Japan	37.9	25.0	17.9	22.7	42.9	45.5	46.7	42.3	Negative - Down
Asia	54.2	48.5	51.4	75.9	80.6	87.5	85.2	68.9	Positive - Down
<b>World</b>	<b>34.9</b>	<b>27.2</b>	<b>29.8</b>	<b>39.3</b>	<b>50.4</b>	<b>60.3</b>	<b>60.7</b>	<b>54.8</b>	<b>Positive - Down</b>
Confidence		Neg	Neg	Neg	Pos	Pos	Pos	Pos	
Trend		Down	Up	Up	Up	Up	Up	Down	

The U.S. and Asia are still the two regions that remain positive about present business conditions. Europe and Japan are in negative territory. Asia is still positive, but dropped significantly from 85.2 in March to 68.9 in April.

### Present Situation Index >50.0 = Positive



## Future Expectations

Industry personnel were asked, "What is your expectation of future business conditions six months from now (positive, negative, neutral?)

### Future Expectations Index

Region	2012				2013				Confidence/ Trend
	Sept	Oct	Nov	Dec	Jan	Feb	Mar	Apr	
North America	52.2	51.3	48.9	65.4	75.0	85.0	83.9	77.3	Positive - Down
Europe	23.5	28.0	17.4	28.2	35.5	43.5	37.0	45.0	Negative - UP
Japan	43.9	33.3	34.5	44.0	58.8	64.0	71.4	57.1	Positive - Down
Asia	56.6	59.0	57.5	85.3	90.0	92.3	89.3	73.9	Positive - Down
<b>World</b>	<b>44.0</b>	<b>42.4</b>	<b>39.5</b>	<b>54.8</b>	<b>65.1</b>	<b>70.7</b>	<b>71.0</b>	<b>64.6</b>	<b>Positive - Down</b>
Confidence		Neg	Neg	Pos	Pos	Pos	Pos	Pos	
Trend		Down	Down	Up	Up	Up	Up	Down	

North America, Japan and Asia are still in the positive range, but those regions are down from March. Europe is still negative, but is less negative than in March.

### Future Expectations Index

(>50.0 = Positive)

