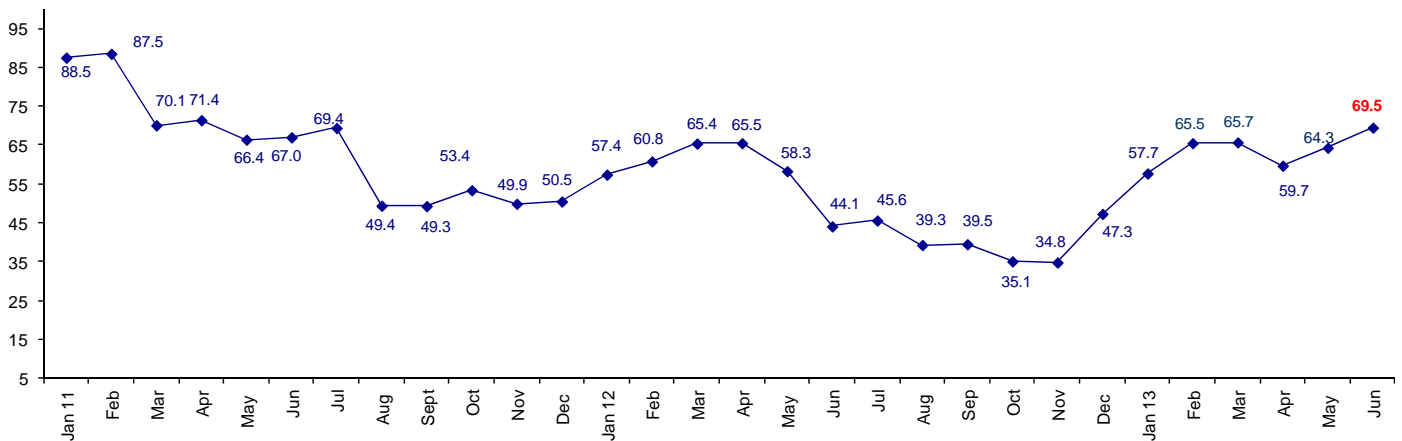


## Confidence in Business Conditions Continues to Slowly Improve

The June Connector Confidence Index is 69.5 up from May at 64.3.

### World Connector Confidence Index (WCCI) >50.0 = Positive



The **World Connector Confidence Index (WCCI)** is the average of all responses for “present situation,” and “future expectations.”

## Present Business Expectations

Industry personnel were asked, "What is your appraisal of current business conditions (positive, negative, neutral)?"

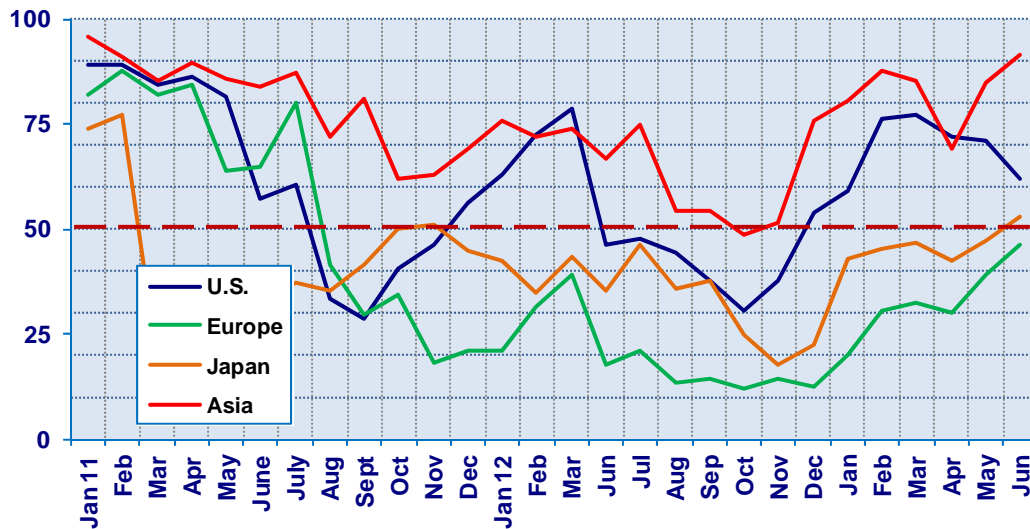
### Present Situation Index

Region	2012			2013						Confidence/ Trend
	Oct	Nov	Dec	Jan	Feb	Mar	Apr	May	Jun	
North America	30.6	37.5	53.8	59.3	76.3	77.4	72.1	70.8	61.9	Positive - Down
Europe	12.0	14.6	12.5	20.0	30.4	32.4	30.2	39.3	46.3	Negative - Up
Japan	25.0	17.9	22.7	42.9	45.5	46.7	42.3	47.1	52.9	Positive - Up
Asia	48.5	51.4	75.9	80.6	87.5	85.2	68.9	84.6	91.3	Positive - Up
<b>World</b>	<b>27.2</b>	<b>29.8</b>	<b>39.3</b>	<b>50.4</b>	<b>60.3</b>	<b>60.7</b>	<b>54.8</b>	<b>61.1</b>	<b>62.9</b>	<b>Positive - Up</b>
Confidence		Neg	Neg	Pos	Pos	Pos	Pos	Pos	Pos	
Trend		Up	Up	Up	Up	Up	Down	Up	Up	

Only Europe is in negative territory. North America is still positive, but declined 8 points between May and June.

### Present Situation Index

>50.0 = Positive



## Future Expectations

Industry personnel were asked, "What is your expectation of future business conditions six months from now (positive, negative, neutral?)"

### Future Expectations Index

Region	Oct	Nov	Dec	2013						Confidence/ Trend
				Jan	Feb	Mar	Apr	May	Jun	
North America	51.3	48.9	65.4	75.0	85.0	83.9	77.3	71.4	82.1	Positive - Up
Europe	28.0	17.4	28.2	35.5	43.5	37.0	45.0	46.4	64.3	Positive - Up
Japan	33.3	34.5	44.0	58.8	64.0	71.4	57.1	66.7	68.4	Positive - Up
Asia	59.0	57.5	85.3	90.0	92.3	89.3	73.9	85.2	84.6	Positive - Down
<b>World</b>	<b>42.4</b>	<b>39.5</b>	<b>54.8</b>	<b>65.1</b>	<b>70.7</b>	<b>71.0</b>	<b>64.6</b>	<b>67.3</b>	<b>75.2</b>	<b>Positive - Up</b>
Confidence		Neg	Pos	Pos	Pos	Pos	Pos	Pos	Pos	
Trend		Down	Up	Up	Up	Up	Down	Up	Up	

All regions are positive about future business conditions, even Europe. March 2012 was the last time Europe was in positive territory.

### Future Expectations Index

(>50.0 = Positive)

