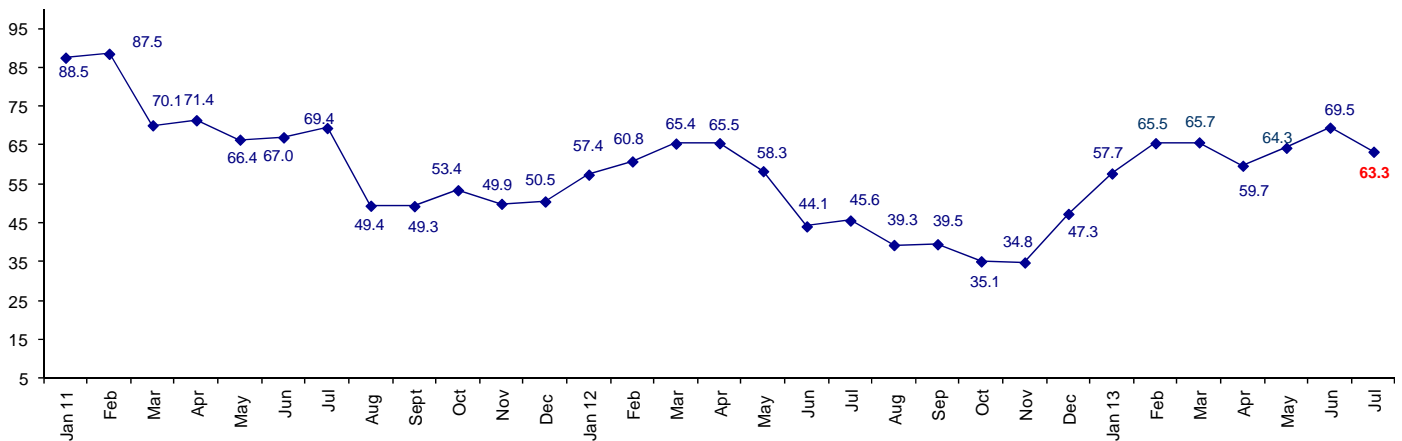


Confidence Dropped in July But Still Positive

The July Connector Confidence Index is 63.3 down from June at 69.5 and from May at 64.3.

World Connector Confidence Index (WCCI) >50.0 = Positive



The **World Connector Confidence Index (WCCI)** is the average of all responses for “present situation,” and “future expectations.”

Present Business Expectations

Industry personnel were asked, "What is your appraisal of current business conditions (positive, negative, neutral)?"

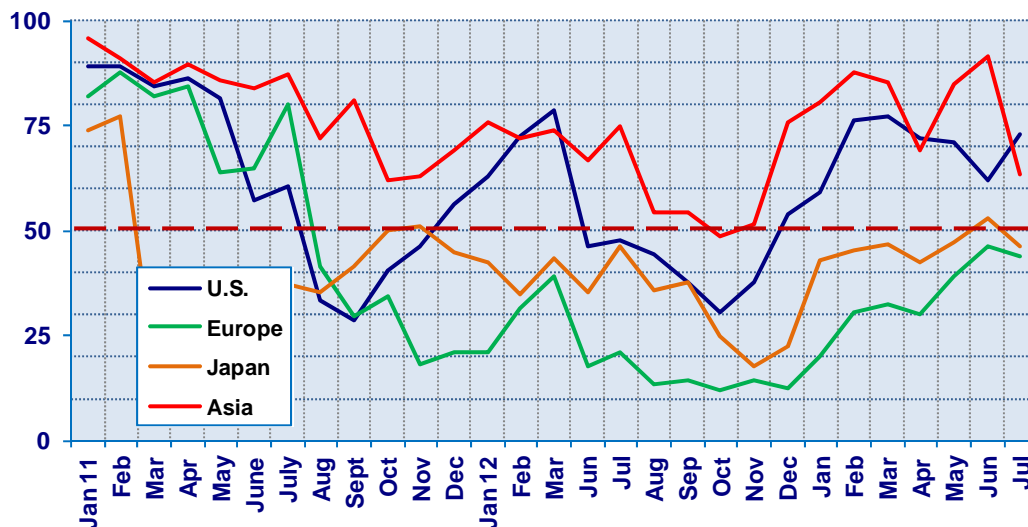
Present Situation Index

Region	2012		2013							Confidence/ Trend
	Nov	Dec	Jan	Feb	Mar	Apr	May	Jun	Jul	
North America	37.5	53.8	59.3	76.3	77.4	72.1	70.8	61.9	73.0	Positive - Up
Europe	14.6	12.5	20.0	30.4	32.4	30.2	39.3	46.3	43.9	Negative - Down
Japan	17.9	22.7	42.9	45.5	46.7	42.3	47.1	52.9	46.2	Negative - Down
Asia	51.4	75.9	80.6	87.5	85.2	68.9	84.6	91.3	63.2	Positive - Down
World	29.8	39.3	50.4	60.3	60.7	54.8	61.1	62.9	57.0	Positive - Down
Confidence		Neg	Pos	Pos	Pos	Pos	Pos	Pos	Pos	
Trend		Up	Up	Up	Up	Down	Up	Up	Down	

Europe and Japan are in negative territory. North America is positive, and Asia, although still positive, had a significant drop in confidence from 91.3 in June to 63.2 in July. Only time will tell if this large drop in confidence is an anomaly or the beginning of a down turn in Asian sales.

Present Situation Index

>50.0 = Positive



Future Expectations

Industry personnel were asked, "What is your expectation of future business conditions six months from now (positive, negative, neutral?)"

Future Expectations Index

Region	2012		2013							Confidence/ Trend
	Nov	Dec	Jan	Feb	Mar	Apr	May	Jun	Jul	
North America	48.9	65.4	75.0	85.0	83.9	77.3	71.4	82.1	85.0	Positive - Up
Europe	17.4	28.2	35.5	43.5	37.0	45.0	46.4	64.3	58.5	Positive - Down
Japan	34.5	44.0	58.8	64.0	71.4	57.1	66.7	68.4	58.3	Positive - Down
Asia	57.5	85.3	90.0	92.3	89.3	73.9	85.2	84.6	72.2	Positive - Down
World	39.5	54.8	65.1	70.7	71.0	64.6	67.3	75.2	69.5	Positive - Down
Confidence		Pos	Pos	Pos	Pos	Pos	Pos	Pos	Pos	
Trend		Up	Up	Up	Up	Down	Up	Up	Down	

All regions are positive about future business conditions; North America is the only region that moved up in confidence about future business conditions.

Future Expectations Index

(>50.0 = Positive)

