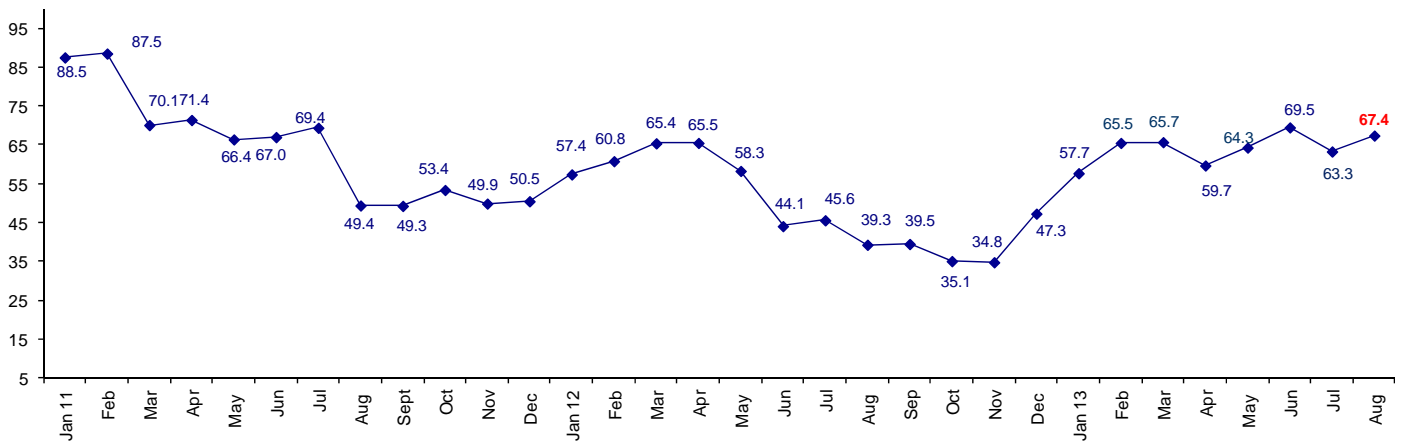


Confidence Up in August

The August Connector Confidence Index is 67.4 up from July at 63.3. The industry became more confident in January 2013, and has stayed in positive territory all year.

World Connector Confidence Index (WCCI)
>50.0 = Positive



The **World Connector Confidence Index (WCCI)** is the average of all responses for “present situation,” and “future expectations.”

Present Business Expectations

Industry personnel were asked, "What is your appraisal of current business conditions (positive, negative, neutral)?"

Present Situation Index

Region	2012		2013								Confidence/ Trend
	Nov	Dec	Jan	Feb	Mar	Apr	May	Jun	Jul	Aug	
North America	37.5	53.8	59.3	76.3	77.4	72.1	70.8	61.9	73.0	87.5	Positive - Up
Europe	14.6	12.5	20.0	30.4	32.4	30.2	39.3	46.3	43.9	41.9	Negative - Down
Japan	17.9	22.7	42.9	45.5	46.7	42.3	47.1	52.9	46.2	39.1	Negative - Down
Asia	51.4	75.9	80.6	87.5	85.2	68.9	84.6	91.3	63.2	81.3	Positive - Up
World	29.8	39.3	50.4	60.3	60.7	54.8	61.1	62.9	57.0	62.7	Positive - Up

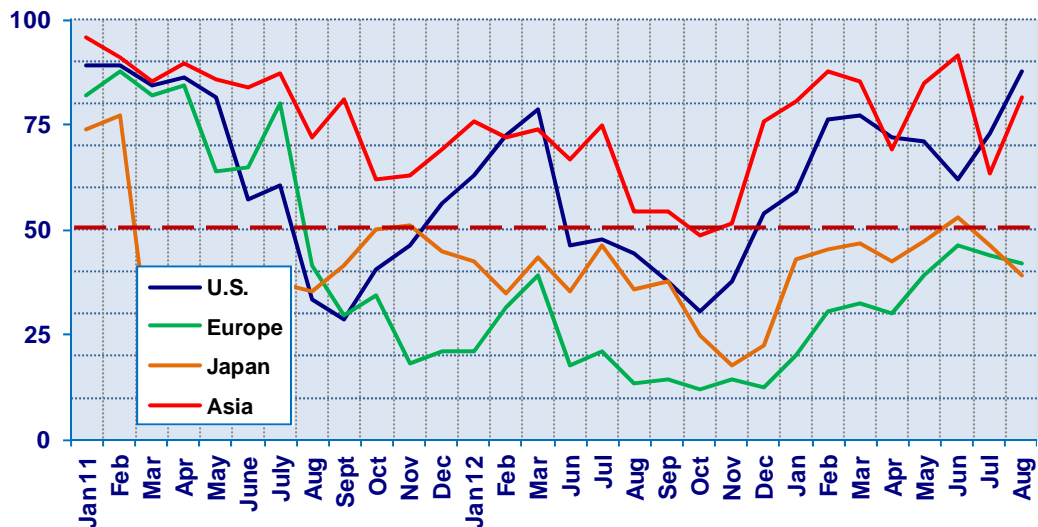
Confidence
Trend

	Neg	Pos	Pos	Pos	Pos	Pos	Pos	Pos	Pos	Pos
	Up	Up	Up	Up	Down	Up	Up	Down	Up	

Europe and Japan are still mired in negative territory. North America has remained positive, and Asia has improved significantly from last month.

Present Situation Index

>50.0 = Positive



Future Expectations

Industry personnel were asked, "What is your expectation of future business conditions six months from now (positive, negative, neutral?)

Future Expectations Index

Region	2012		2013								Confidence/ Trend
	Nov	Dec	Jan	Feb	Mar	Apr	May	Jun	Jul	Aug	
North America	48.9	65.4	75.0	85.0	83.9	77.3	71.4	82.1	85.0	90.3	Positive - Up
Europe	17.4	28.2	35.5	43.5	37.0	45.0	46.4	64.3	58.5	61.8	Positive - Up
Japan	34.5	44.0	58.8	64.0	71.4	57.1	66.7	68.4	58.3	48.0	Negative - Down
Asia	57.5	85.3	90.0	92.3	89.3	73.9	85.2	84.6	72.2	80.6	Positive - Up
World	39.5	54.8	65.1	70.7	71.0	64.6	67.3	75.2	69.5	67.4	Positive - Down
Confidence		Pos	Pos	Pos	Pos	Pos	Pos	Pos	Pos	Pos	
Trend		Up	Up	Up	Up	Down	Up	Up	Down	Down	

All regions are positive and have moved up in confidence about future business, except Japan. North America is extremely positive about the future.

Future Expectations Index

(>50.0 = Positive)

