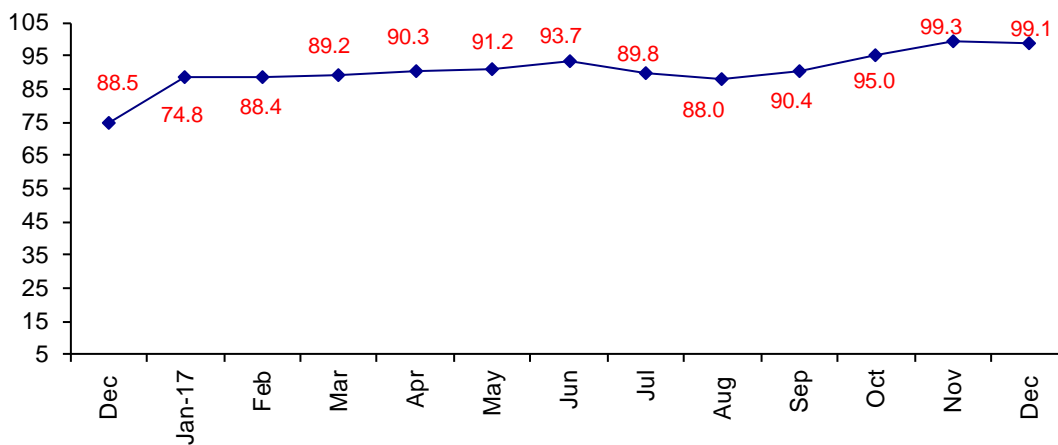


**Business is Excellent and  
Confidence is High about the Future**

The December Confidence Index is 99.1 about the same as November at 99.3.

**World Connector Confidence Index (WCCI)  
>50.0 = Positive**



The **World Connector Confidence Index (WCCI)** is the average of all responses for “present situation,” and “future expectations.”

## Present Business Expectations

Industry personnel were asked, "What is your appraisal of current business conditions (positive, negative, neutral)?"

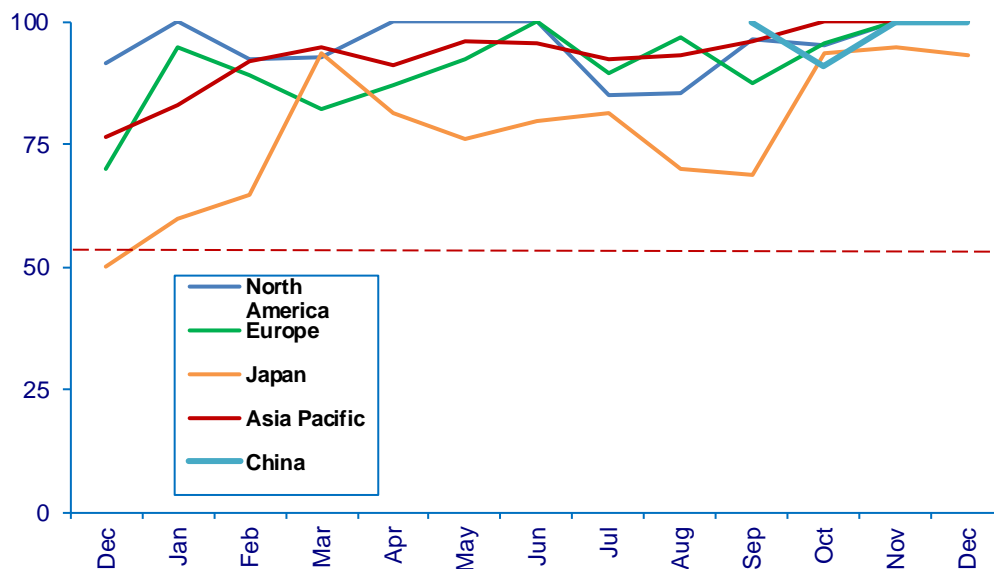
### Present Situation Index – 99.1

	Jul	Aug	Sep	Oct	Nov	Dec	Confidence Level	Confidence Trend
North America	85.2	85.7	96.6	95.5	100.0	100.0	+	Same
Europe	89.7	97.0	87.5	95.8	100.0	100.0	+	Same
Japan	81.3	70.0	68.8	93.6	94.7	93.7	+	↓
Asia	92.3	93.1	96.3	100.0	100.0	100.0	+	Same
China			100.0	90.9	100.0	100.0	+	Same
<b>World</b>	<b>87.8</b>	<b>88.2</b>	<b>91.5</b>	<b>95.2</b>	<b>99.3</b>	<b>99.1</b>	<b>+</b>	<b>↓</b>
<b>Confidence</b>	<b>+</b>	<b>+</b>	<b>+</b>	<b>+</b>	<b>+</b>	<b>+</b>		
<b>Trend</b>		↑	↑	↑	↑	↓		

Japan is the only region not at 100%.

### Present Situation Index

>50.0 = Positive



## Future Expectations

Industry personnel were asked, "What is your expectation of future business conditions six months from now (positive, negative, or neutral)?"

### Future Expectations Index – 99.0

Region	Jul	Aug	Sep	Oct	Nov	Dec	Confidence Level	Confidence Trend
North America	88.9	86.2	89.3	95.7	96.7	100.0	+	↑
Europe	95.8	100.0	90.3	95.8	100.0	100.0	+	Same
Japan	86.7	68.8	60.0	92.3	100.0	100.0	+	Same
Asia	95.7	86.7	95.7	100.0	97.0	100.0	+	↑
China			95.8	90.0	100.0	100.0	+	Same
<b>World</b>	<b>92.1</b>	<b>87.9</b>	<b>89.2</b>	<b>94.8</b>	<b>99.3</b>	<b>99.0</b>	<b>+</b>	<b>↑</b>
<b>Confidence</b>	<b>+</b>	<b>+</b>	<b>+</b>	<b>+</b>	<b>+</b>	<b>+</b>		
<b>Trend</b>		↓	↑	↑	↑	↓		

All regions are at 100%.

