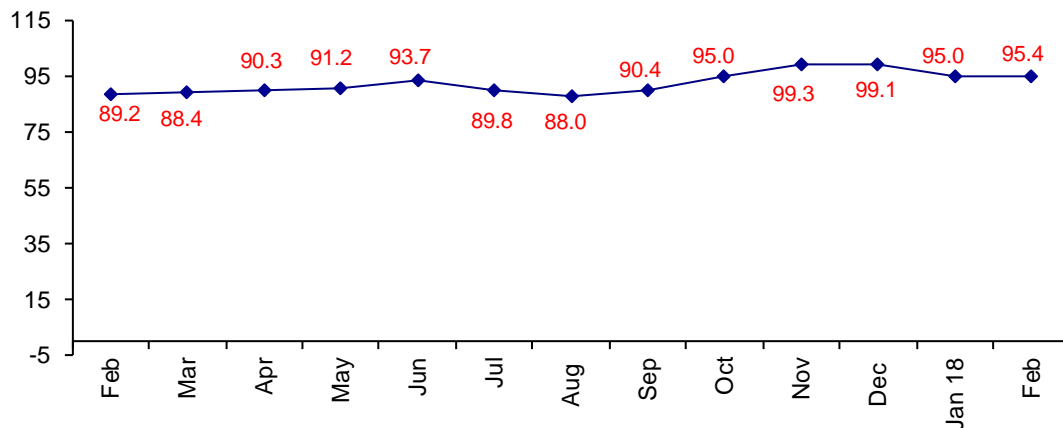


We Are in a Great Business Environment

The February Confidence Index is 95.4 up slightly from January at 95.0.

World Connector Confidence Index (WCCI)
>50.0 = Positive



The **World Connector Confidence Index (WCCI)** is the average of all responses for “present situation,” and “future expectations.”

Present Business Expectations

Industry personnel were asked, "What is your appraisal of current business conditions (positive, negative, neutral)?"

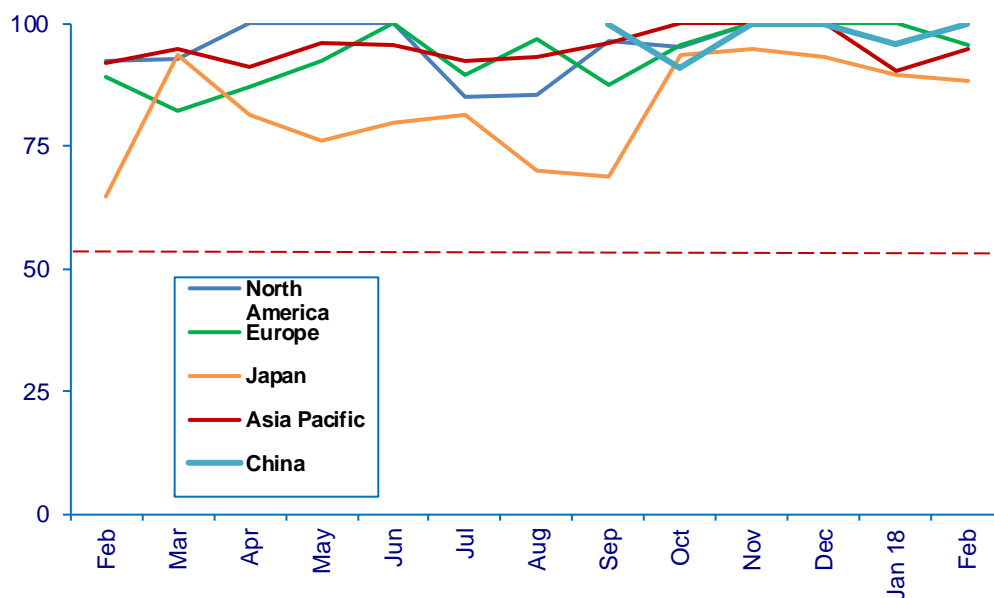
Present Situation Index – 96.0

	Sep	Oct	Nov	Dec	Jan	Feb	Confidence Level	Confidence Trend
North America	96.6	95.5	100.0	100.0	95.7	100.0	+	↑
Europe	87.5	95.8	100.0	100.0	100.0	95.7	+	↓
Japan	68.8	93.6	94.7	93.7	89.5	88.2	+	↓
Asia	96.3	100.0	100.0	100.0	90.5	95.0	+	↑
China	100.0	90.9	100.0	100.0	95.8	100.0	+	↑
World	91.5	95.2	99.3	99.1	94.7	96.0	+	↑
Confidence	+	+	+	+	+	+		
Trend		↑	↑	↓	↑	↑		

All regions are positive, but Europe and Japan dropped in confidence. North America and China are at 100%.

Present Situation Index

>50.0 = Positive



Future Expectations

Industry personnel were asked, "What is your expectation of future business conditions six months from now (positive, negative, or neutral)?"

Future Expectations Index – 94.7

Region	Sep	Oct	Nov	Dec	Jan	Feb	Confidence Level	Confidence Trend
North America	89.3	95.7	96.7	100.0	96.0	100.0	+	↑
Europe	90.3	95.8	100.0	100.0	95.7	95.5	+	↓
Japan	60.0	92.3	100.0	100.0	86.7	81.3	+	↓
Asia	95.7	100.0	97.0	100.0	100.0	94.4	+	↓
China	95.8	90.0	100.0	100.0	95.8	100.0	+	↑
World	89.2	94.8	99.3	99.0	95.3	94.7	+	↓
Confidence	+	+	+	+	+	+		
Trend		↑	↑	↑	↓	↓		

North America and China are at 100%.

Future Expectations Index

