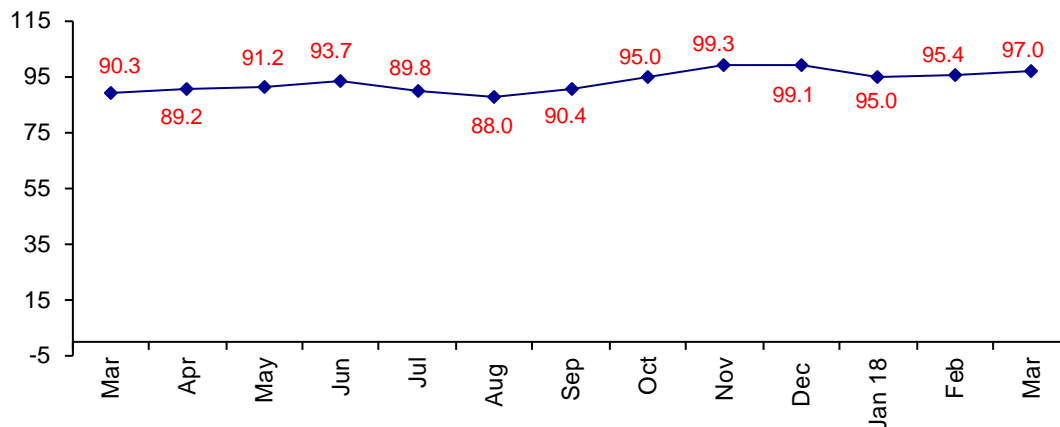


## Confidence in the Connector Business Is Very High

The March Confidence Index is 97.0 up from February at .95.4.

**World Connector Confidence Index (WCCI)**  
**>50.0 = Positive**



The **World Connector Confidence Index (WCCI)** is the average of all responses for “present situation,” and “future expectations.”

## Present Business Expectations

Industry personnel were asked, "What is your appraisal of current business conditions (positive, negative, neutral)?"

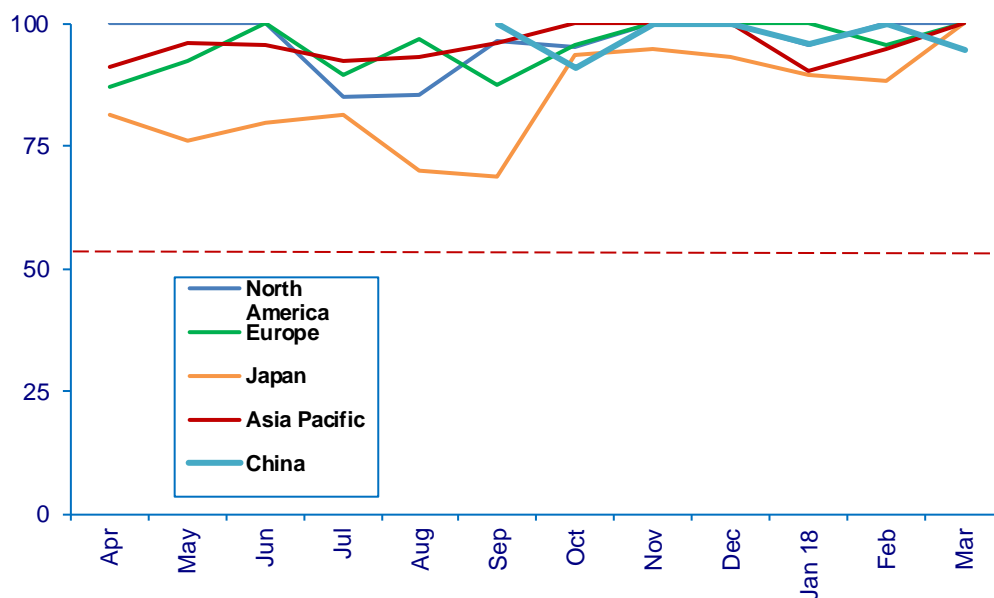
### Present Situation Index – 99.0

	Oct	Nov	Dec	Jan	Feb	Mar	Confidence Level	Confidence Trend
North America	95.5	100.0	100.0	95.7	100.0	100.0	+	Same
Europe	95.8	100.0	100.0	100.0	95.7	100.0	+	↑
Japan	93.6	94.7	93.7	89.5	88.2	100.0	+	↑
Asia	100.0	100.0	100.0	90.5	95.0	100.0	+	↑
China	90.9	100.0	100.0	95.8	100.0	94.7	+	↓
<b>World</b>	<b>95.2</b>	<b>99.3</b>	<b>99.1</b>	<b>94.7</b>	<b>96.0</b>	<b>99.0</b>	<b>+</b>	<b>↑</b>
<b>Confidence</b>	<b>+</b>	<b>+</b>	<b>+</b>	<b>+</b>	<b>+</b>	<b>+</b>		
<b>Trend</b>		<b>↑</b>	<b>↑</b>	<b>↓</b>	<b>↑</b>	<b>↑</b>		

All regions are positive, and all regions except China are at 100%. In February China was the only region at 100%.

### Present Situation Index

>50.0 = Positive



## Future Expectations

Industry personnel were asked, "What is your expectation of future business conditions six months from now (positive, negative, or neutral)?"

### Future Expectations Index – 94.8

Region	Oct	Nov	Dec	Jan	Feb	Mar	Confidence Level	Confidence Trend
North America	95.7	96.7	100.0	96.0	100.0	94.7	+	↓
Europe	95.8	100.0	100.0	95.7	95.5	95.8	+	↑
Japan	92.3	100.0	100.0	86.7	81.3	93.3	+	↑
Asia	100.0	97.0	100.0	100.0	94.4	95.0	+	↑
China	90.0	100.0	100.0	95.8	100.0	94.7	+	↓
<b>World</b>	<b>94.8</b>	<b>99.3</b>	<b>99.0</b>	<b>95.3</b>	<b>94.7</b>	<b>94.8</b>	<b>+</b>	<b>↑</b>
<b>Confidence</b>	<b>+</b>	<b>+</b>	<b>+</b>	<b>+</b>	<b>+</b>	<b>+</b>		
<b>Trend</b>		<b>↑</b>	<b>↓</b>	<b>↓</b>	<b>↓</b>	<b>↑</b>		

North America and China are down from February at 100%. Japan is up and Europe and Asia are up slightly.

### Future Expectations Index

