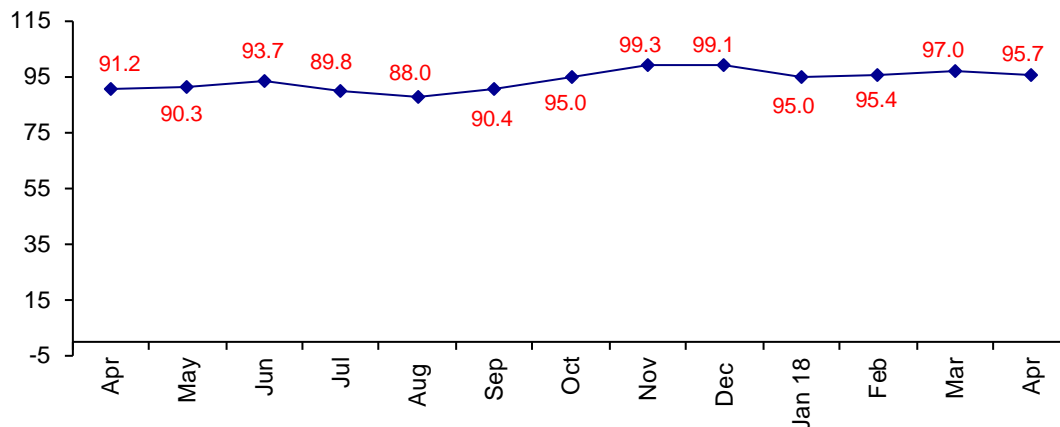


Connector Demand Strong and Confidence Is High

The April Confidence Index is 95.7 slightly down from March at 97.0.

World Connector Confidence Index (WCCI)
>50.0 = Positive



The **World Connector Confidence Index (WCCI)** is the average of all responses for “present situation,” and “future expectations.”

Present Business Expectations

Industry personnel were asked, "What is your appraisal of current business conditions (positive, negative, neutral)?"

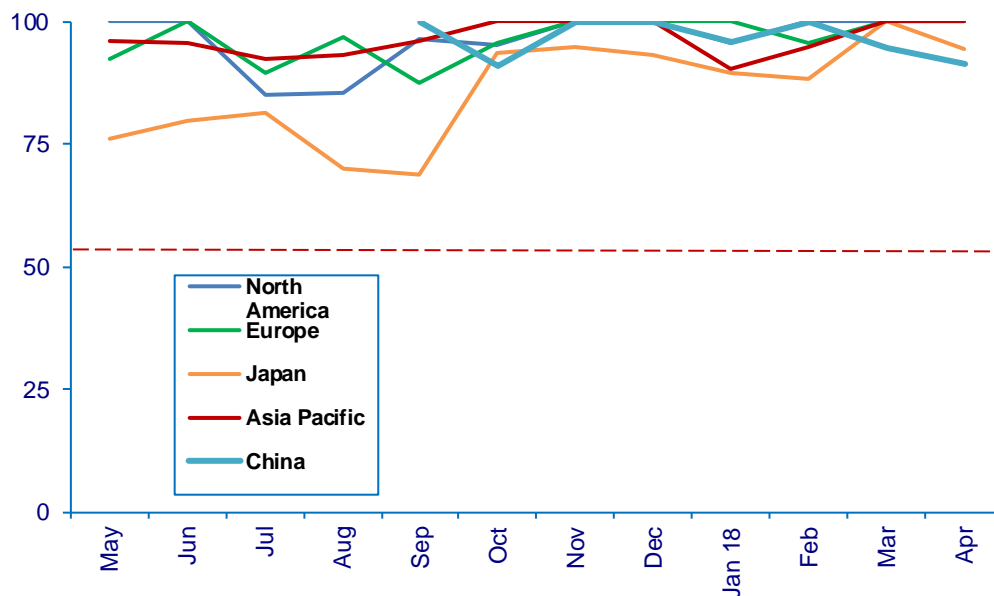
Present Situation Index – 97.4

	Nov	Dec	Jan	Feb	Mar	Apr	Confidence Level	Confidence Trend
North America	100.0	100.0	95.7	100.0	100.0	100.0	+	Same
Europe	100.0	100.0	100.0	95.7	100.0	100.0	+	Same
Japan	94.7	93.7	89.5	88.2	100.0	94.4	+	↓
Asia	100.0	100.0	90.5	95.0	100.0	100.0	+	Same
China	100.0	100.0	95.8	100.0	94.7	91.3	+	↓
World	99.3	99.1	94.7	96.0	99.0	97.4	+	↓
Confidence	+	+	+	+	+	+		
Trend		↓	↓	↑	↑	↓		

All regions are positive. North America, Europe and Asia remain at 100%. Japan and China dropped in confidence in present business conditions.

Present Situation Index

>50.0 = Positive



Future Expectations

Industry personnel were asked, "What is your expectation of future business conditions six months from now (positive, negative, or neutral)?"

Future Expectations Index – 93.9

Region	Nov	Dec	Jan	Feb	Mar	Apr	Confidence Level	Confidence Trend
North America	96.7	100.0	96.0	100.0	94.7	96.6	+	↑
Europe	100.0	100.0	95.7	95.5	95.8	89.3	+	↓
Japan	100.0	100.0	86.7	81.3	93.3	93.8	+	↑
Asia	97.0	100.0	100.0	94.4	95.0	95.5	+	↑
China	100.0	100.0	95.8	100.0	94.7	95.0	+	↑
World	99.3	99.0	95.3	94.7	94.8	93.9	+	↓
Confidence	+	+	+	+	+	+		
Trend		↓	↓	↓	↑	↓		

Europe is the only region that dropped in confidence.

Future Expectations Index

