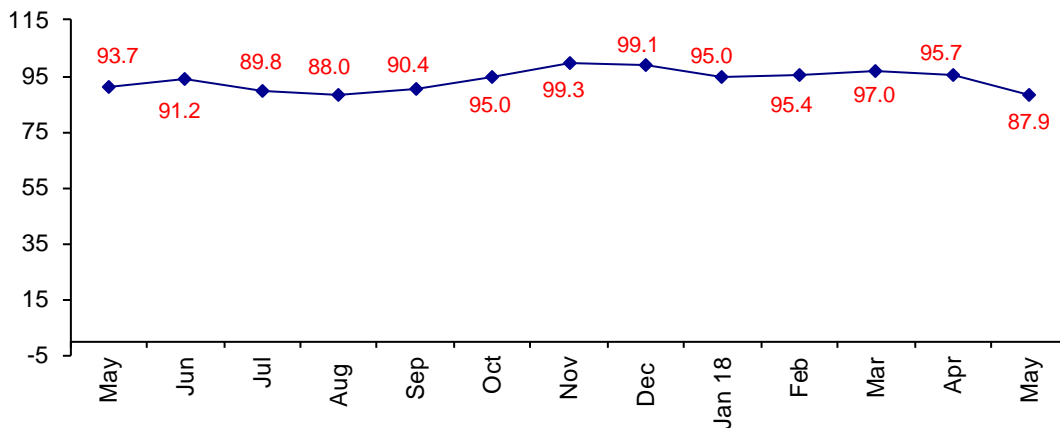


News Brief No-25-18
June 4, 2018

Confidence Down Slightly But Industry Still Positive About the Future

The May Confidence Index is 87.9 down from April at 95.7.

World Connector Confidence Index (WCCI)
>50.0 = Positive



The **World Connector Confidence Index (WCCI)** is the average of all responses for “present situation,” and “future expectations.”

Present Business Expectations

Industry personnel were asked, "What is your appraisal of current business conditions (positive, negative, neutral)?"

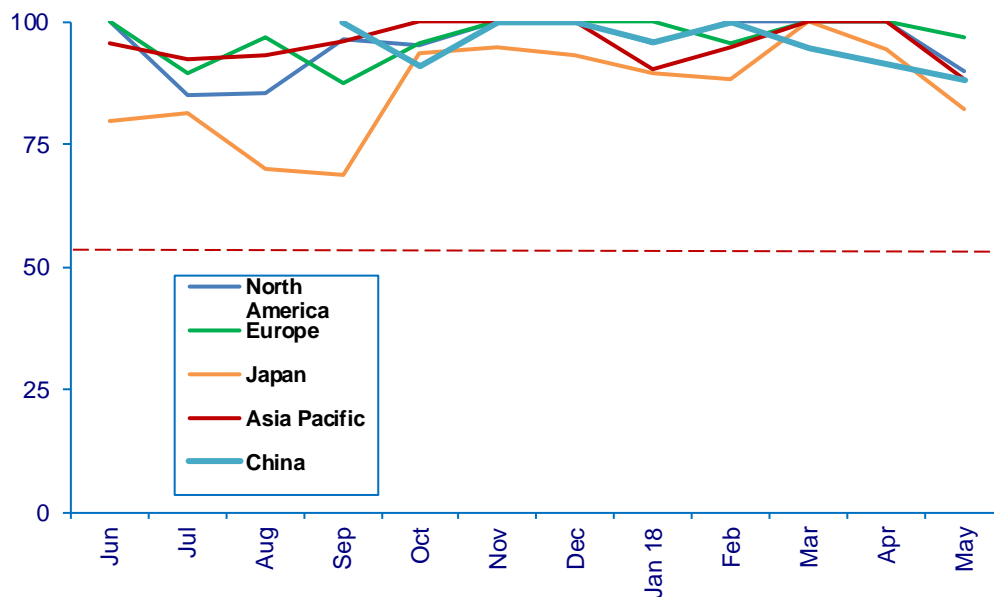
Present Situation Index – 90.0

	Dec	Jan	Feb	Mar	Apr	May	Confidence Level	Confidence Trend
North America	100.0	95.7	100.0	100.0	100.0	90.0	+	↓
Europe	100.0	100.0	95.7	100.0	100.0	96.9	+	↓
Japan	93.7	89.5	88.2	100.0	94.4	82.4	+	↓
Asia	100.0	90.5	95.0	100.0	100.0	88.5	+	↓
China	100.0	95.8	100.0	94.7	91.3	88.0	+	↓
World	99.1	94.7	96.0	99.0	97.4	90.0	+	↓
Confidence	+	+	+	+	+	+		
Trend		↓	↑	↑	↓	↓		

All regions remain positive, and all regions have dropped in confidence in present business conditions.

Present Situation Index

>50.0 = Positive



Future Expectations

Industry personnel were asked, “What is your expectation of future business conditions six months from now (positive, negative, or neutral)?”

Future Expectations Index – 85.6

Region	Dec	Jan	Feb	Mar	Apr	May	Confidence Level	Confidence Trend
North America	100.0	96.0	100.0	94.7	96.6	89.3	+	↓
Europe	100.0	95.7	95.5	95.8	89.3	92.3	+	↑
Japan	100.0	86.7	81.3	93.3	93.8	72.2	+	↓
Asia	100.0	100.0	94.4	95.0	95.5	86.4	+	↓
China	100.0	95.8	100.0	94.7	95.0	83.3	+	↓
World	99.0	95.3	94.7	94.8	93.9	85.6	+	↓
Confidence	+	+	+	+	+	+		
Trend		↓	↓	↓	↓	↓		

Europe is the only region that didn't drop in confidence. Japan dropped significantly.

Future Expectations Index

