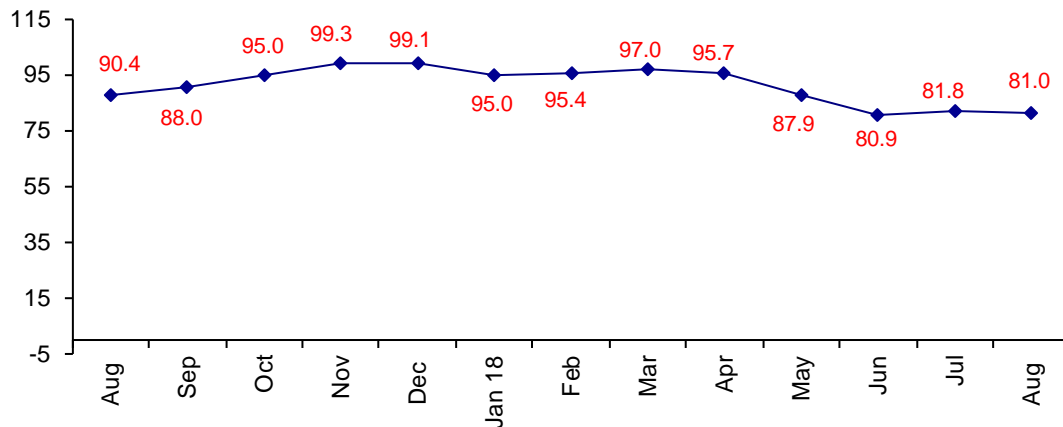


## Great Business Environment Confidence Excellent

The August Confidence Index is 81.0 about the same as July at 81.8.

### World Connector Confidence Index (WCCI) >50.0 = Positive



The **World Connector Confidence Index (WCCI)** is the average of all responses for “present situation,” and “future expectations.”

## Present Business Expectations

Industry personnel were asked, "What is your appraisal of current business conditions (positive, negative, neutral)?"

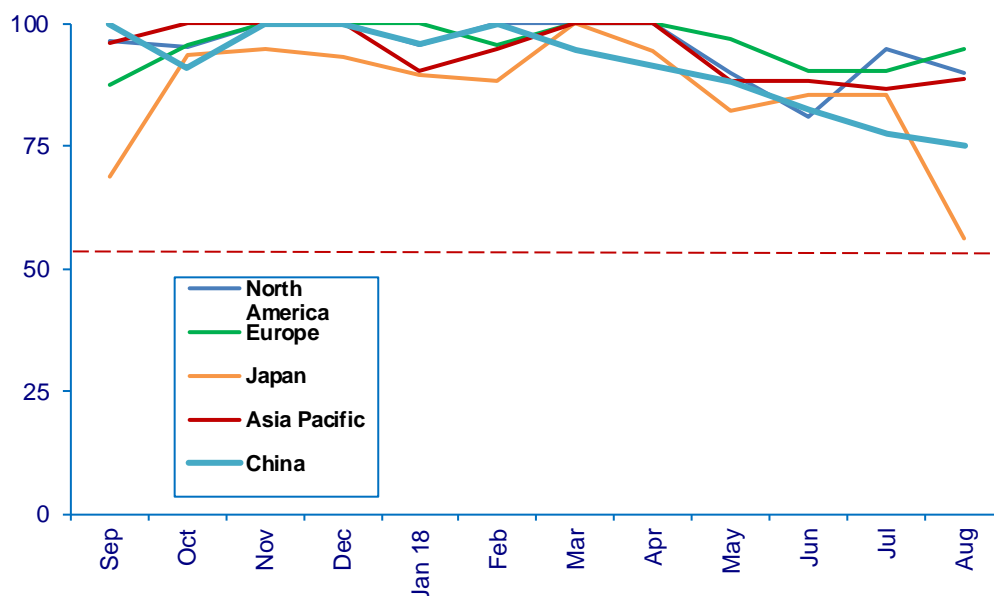
### Present Situation Index – 82.2

	Mar	Apr	May	Jun	Jul	Aug	Confidence Level	Confidence Trend
North America	100.0	100.0	90.0	81.0	95.0	90.0	+	↓
Europe	100.0	100.0	96.9	90.5	90.5	95.0	+	↑
Japan	100.0	94.4	82.4	85.7	85.7	56.3	+	↓
Asia	100.0	100.0	88.5	88.2	86.7	88.9	+	↑
China	94.7	91.3	88.0	82.4	77.8	75.0	+	↓
<b>World</b>	<b>99.0</b>	<b>97.4</b>	<b>90.0</b>	<b>85.6</b>	<b>87.5</b>	<b>82.2</b>	<b>+</b>	<b>↓</b>
<b>Confidence</b>	<b>+</b>	<b>+</b>	<b>+</b>	<b>+</b>	<b>+</b>	<b>+</b>		
<b>Trend</b>		↓	↓	↓	↑	↓		

Japan dropped significantly. North America and China also dropped, but only slightly. Europe and Asia were up in confidence.

### Present Situation Index

>50.0 = Positive



## Future Expectations

Industry personnel were asked, "What is your expectation of future business conditions six months from now (positive, negative, or neutral)?"

### Future Expectations Index – 79.8

Region	Mar	Apr	May	Jun	Jul	Aug	Confidence Level	Confidence Trend
North America	94.7	96.6	89.3	76.2	76.2	88.9	+	↑
Europe	95.8	89.3	92.3	77.8	86.7	81.0	+	↓
Japan	93.3	93.8	72.2	75.0	76.9	54.5	+	↓
Asia	95.0	95.5	86.4	80.0	80.0	88.2	+	↑
China	94.7	95.0	83.3	70.6	61.1	76.5	+	↑
<b>World</b>	<b>94.8</b>	<b>93.9</b>	<b>85.6</b>	<b>75.9</b>	<b>75.6</b>	<b>79.8</b>	<b>+</b>	<b>↑</b>
<b>Confidence</b>	<b>+</b>	<b>+</b>	<b>+</b>	<b>+</b>	<b>+</b>	<b>+</b>		
<b>Trend</b>		↓	↓	↓	↓	↑		

China, Asia and North America rose in confidence about future expectations. Japan dropped sharply.

### Future Expectations Index

