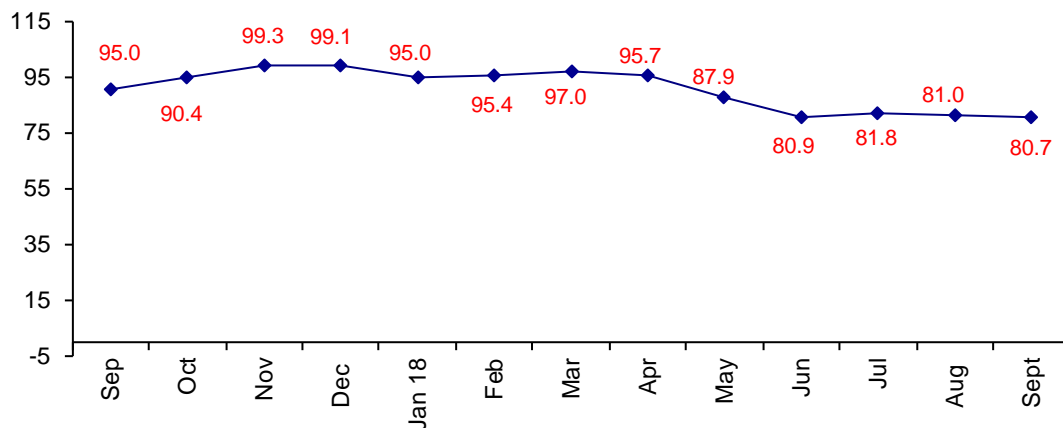


Confidence in China Drops

The September Confidence Index is 80.7 almost the same as August at 81.0.

World Connector Confidence Index (WCCI)
>50.0 = Positive



The **World Connector Confidence Index (WCCI)** is the average of all responses for “present situation,” and “future expectations.”

Present Business Expectations

Industry personnel were asked, "What is your appraisal of current business conditions (positive, negative, neutral)?"

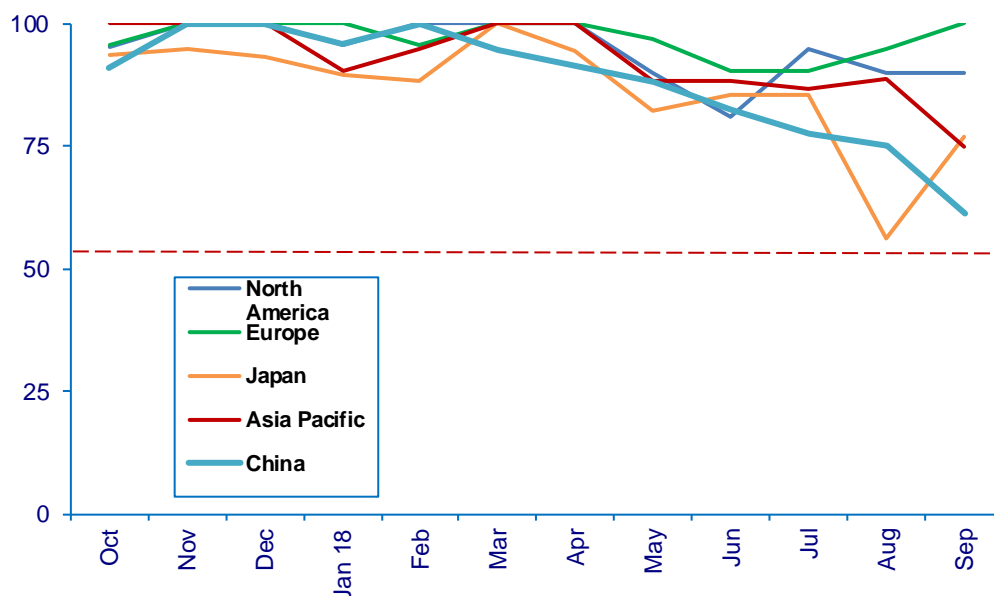
Present Situation Index – 81.1

	Apr	May	Jun	Jul	Aug	Sep	Confidence Level	Confidence Trend
North America	100.0	90.0	81.0	95.0	90.0	90.0	+	Same
Europe	100.0	96.9	90.5	90.5	95.0	100.0	+	↑
Japan	94.4	82.4	85.7	85.7	56.3	76.9	+	↑
Asia	100.0	88.5	88.2	86.7	88.9	75.0	+	↓
China	91.3	88.0	82.4	77.8	75.0	61.2	+	↓
World	97.4	90.0	85.6	87.5	82.2	81.1	+	↓
Confidence	+	+	+	+	+	+		
Trend		↓	↓	↑	↓	↓		

North America and Europe are up in confidence, with Europe at 100. Asia and China are both down in present confidence.

Present Situation Index

>50.0 = Positive



Future Expectations

Industry personnel were asked, "What is your expectation of future business conditions six months from now (positive, negative, or neutral)?"

Future Expectations Index – 80.3

Region	Apr	May	Jun	Jul	Aug	Sep	Confidence Level	Confidence Trend
North America	96.6	89.3	76.2	76.2	88.9	86.7	+	↓
Europe	89.3	92.3	77.8	86.7	81.0	94.1	+	↑
Japan	93.8	72.2	75.0	76.9	54.5	80.0	+	↑
Asia	95.5	86.4	80.0	80.0	88.2	82.4	+	↓
China	95.0	83.3	70.6	61.1	76.5	58.8	+	↓
World	93.9	85.6	75.9	75.6	79.8	80.3	+	↑
Confidence	+	+	+	+	+	+		
Trend		↓	↓	↓	↑	↑		

Europe and Japan rose in confidence about future expectations. Japan rose sharply from August. North America and Asia dropped slightly in future expectations.

Future Expectations Index

