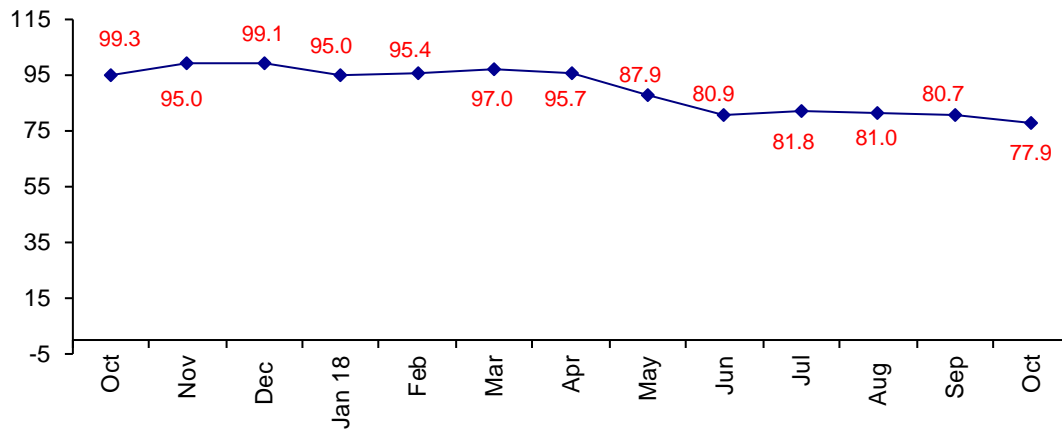


North American Confidence Highest in World

The October Confidence Index is 77.9.

World Connector Confidence Index (WCCI) >50.0 = Positive



The **World Connector Confidence Index (WCCI)** is the average of all responses for “present situation,” and “future expectations.”

Present Business Expectations

Industry personnel were asked, "What is your appraisal of current business conditions (positive, negative, neutral)?"

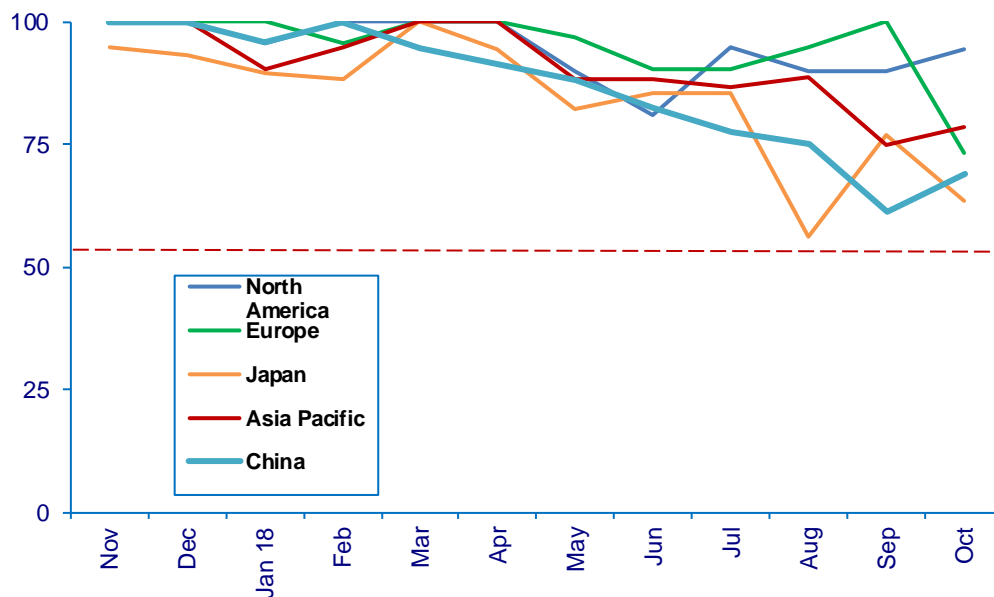
Present Situation Index – 77.5

	May	Jun	Jul	Aug	Sep	Oct	Confidence Level	Confidence Trend
North America	90.0	81.0	95.0	90.0	90.0	94.4	+	↑
Europe	96.9	90.5	90.5	95.0	100.0	73.3	+	↓
Japan	82.4	85.7	85.7	56.3	76.9	63.6	+	↓
Asia	88.5	88.2	86.7	88.9	75.0	78.6	+	↑
China	88.0	82.4	77.8	75.0	61.2	69.2	+	↑
World	90.0	85.6	87.5	82.2	81.1	77.5	+	↓
Confidence	+	+	+	+	+	+		
Trend		↓	↑	↑	↓	↓		

North America, Asia and China are up in confidence. Europe dropped dramatically, and Japan also dropped in confidence.

Present Situation Index

>50.0 = Positive



Future Expectations

Industry personnel were asked, "What is your expectation of future business conditions six months from now (positive, negative, or neutral)?"

Future Expectations Index – 78.3

Region	May	Jun	Jul	Aug	Sep	Oct	Confidence Level	Confidence Trend
North America	89.3	76.2	76.2	88.9	86.7	87.5	+	↑
Europe	92.3	77.8	86.7	81.0	94.1	83.3	+	↓
Japan	72.2	75.0	76.9	54.5	80.0	54.5	+	↓
Asia	86.4	80.0	80.0	88.2	82.4	87.5	+	↑
China	83.3	70.6	61.1	76.5	58.8	71.4	+	↑
World	85.6	75.9	75.6	79.8	80.3	78.3	+	↓
Confidence	+	+	+	+	+	+		
Trend		↓	↓	↑	↑	↓		

Europe and Japan dropped about future expectations. North America, Japan and China rose in confidence.

Future Expectations Index

