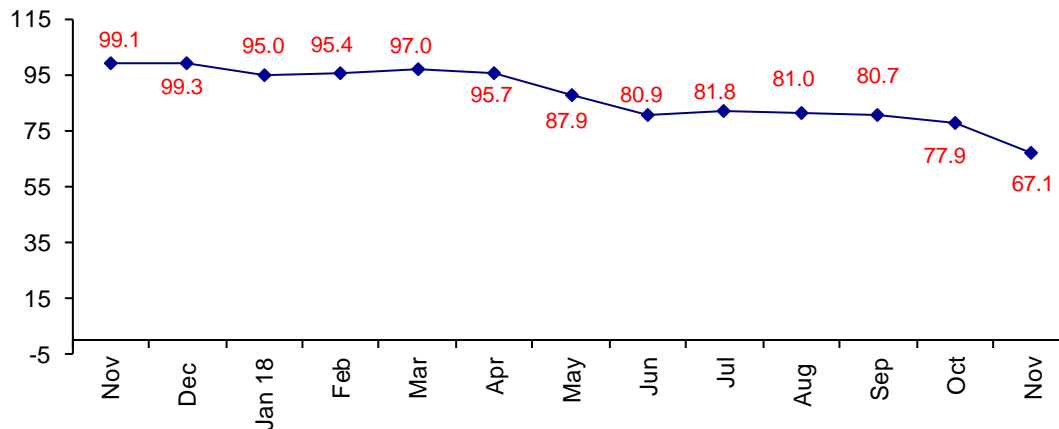


## Slowdown in Growth Triggers Drop in Confidence

The November Confidence Index is 67.1.

**World Connector Confidence Index (WCCI)**  
**>50.0 = Positive**



The **World Connector Confidence Index (WCCI)** is the average of all responses for “present situation,” and “future expectations.”

## Present Business Expectations

Industry personnel were asked, "What is your appraisal of current business conditions (positive, negative, neutral)?"

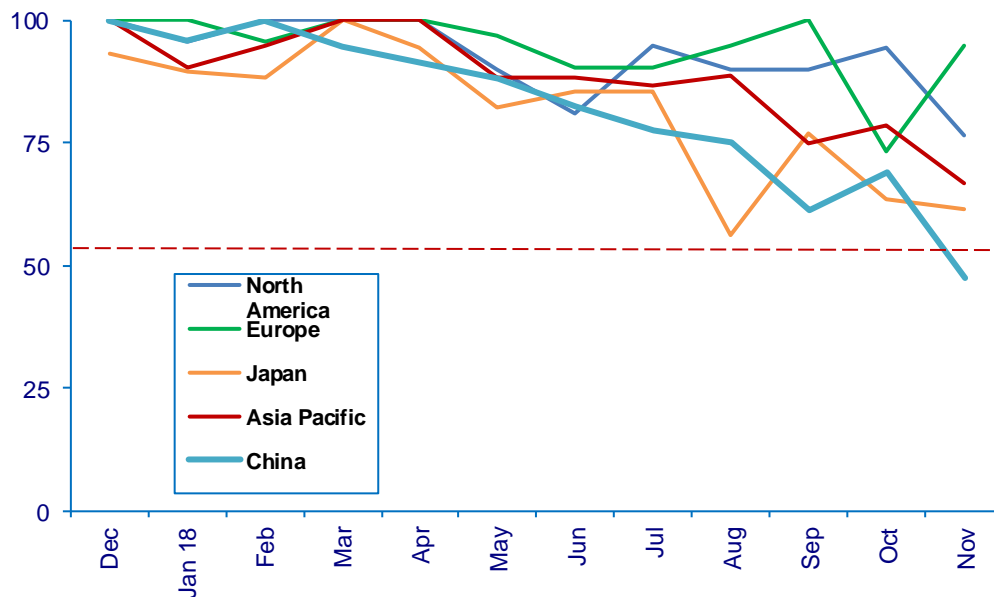
### Present Situation Index – 69.3

|               | Jun         | Jul         | Aug         | Sep         | Oct         | Nov         | Confidence Level | Confidence Trend |
|---------------|-------------|-------------|-------------|-------------|-------------|-------------|------------------|------------------|
| North America | 81.0        | 95.0        | 90.0        | 90.0        | 94.4        | 76.5        | +                | ↓                |
| Europe        | 90.5        | 90.5        | 95.0        | 100.0       | 73.3        | 94.7        | +                | ↑                |
| Japan         | 85.7        | 85.7        | 56.3        | 76.9        | 63.6        | 61.5        | +                | ↓                |
| Asia          | 88.2        | 86.7        | 88.9        | 75.0        | 78.6        | 66.7        | +                | ↓                |
| China         | 82.4        | 77.8        | 75.0        | 61.2        | 69.2        | 47.6        | -                | ↓                |
| <b>World</b>  | <b>85.6</b> | <b>87.5</b> | <b>82.2</b> | <b>81.1</b> | <b>77.5</b> | <b>69.3</b> | <b>+</b>         | <b>↓</b>         |

Although European confidence soared, we suspect this is an aberration and not representative of actual conditions. European growth is clearly slowing down. China dropped to 47.6 which is negative.

### Present Situation Index

>50.0 = Positive



## Future Expectations

Industry personnel were asked, “What is your expectation of future business conditions six months from now (positive, negative, or neutral)?”

### Future Expectations Index – 64.5

| Region            | Jun         | Jul         | Aug         | Sep         | Oct         | Nov         | Confidence Level | Confidence Trend |
|-------------------|-------------|-------------|-------------|-------------|-------------|-------------|------------------|------------------|
| North America     | 76.2        | 76.2        | 88.9        | 86.7        | 87.5        | 64.3        | +                | ↓                |
| Europe            | 77.8        | 86.7        | 81.0        | 94.1        | 83.3        | 81.3        | +                | ↓                |
| Japan             | 75.0        | 76.9        | 54.5        | 80.0        | 54.5        | 54.5        | +                | Same             |
| Asia              | 80.0        | 80.0        | 88.2        | 82.4        | 87.5        | 72.2        | +                | ↓                |
| China             | 70.6        | 61.1        | 76.5        | 58.8        | 71.4        | 47.1        | +                | ↓                |
| <b>World</b>      | <b>85.6</b> | <b>75.9</b> | <b>75.6</b> | <b>79.8</b> | <b>80.3</b> | <b>64.5</b> | <b>+</b>         | <b>↓</b>         |
| <b>Confidence</b> | <b>+</b>    | <b>+</b>    | <b>+</b>    | <b>+</b>    | <b>+</b>    | <b>+</b>    |                  |                  |
| <b>Trend</b>      |             | ↓           | ↓           | ↑           | ↑           | ↓           |                  |                  |

All regions have dropped in confidence, except Japan which stayed the same as October. The world confidence drop is directly related to a slow down in growth. China reached negative confidence for the first time in years.

### Future Expectations Index

