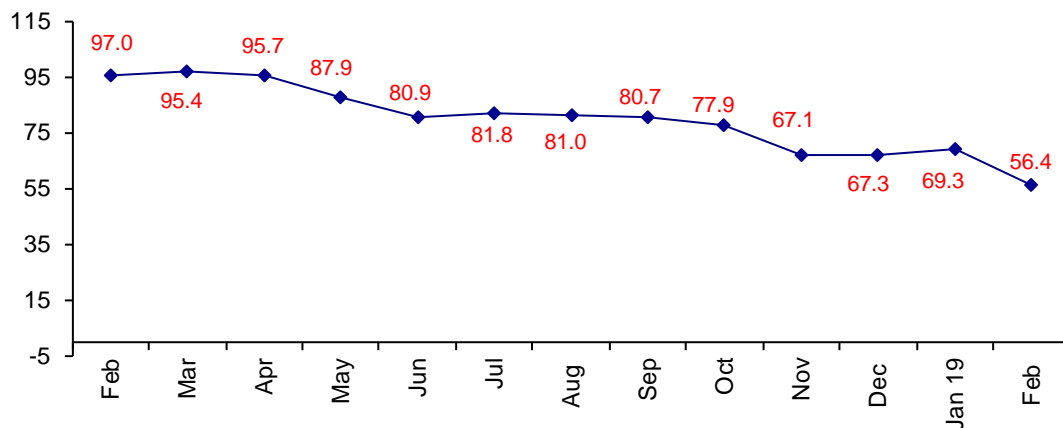


World GDP Slows And Confidence Drops Significantly

The February Confidence Index is 56.4 down from January at 69.3.

World Connector Confidence Index (WCCI)
>50.0 = Positive



The **World Connector Confidence Index (WCCI)** is the average of all responses for “present situation,” and “future expectations.”

Present Business Expectations

Industry personnel were asked, "What is your appraisal of current business conditions (positive, negative, neutral)?"

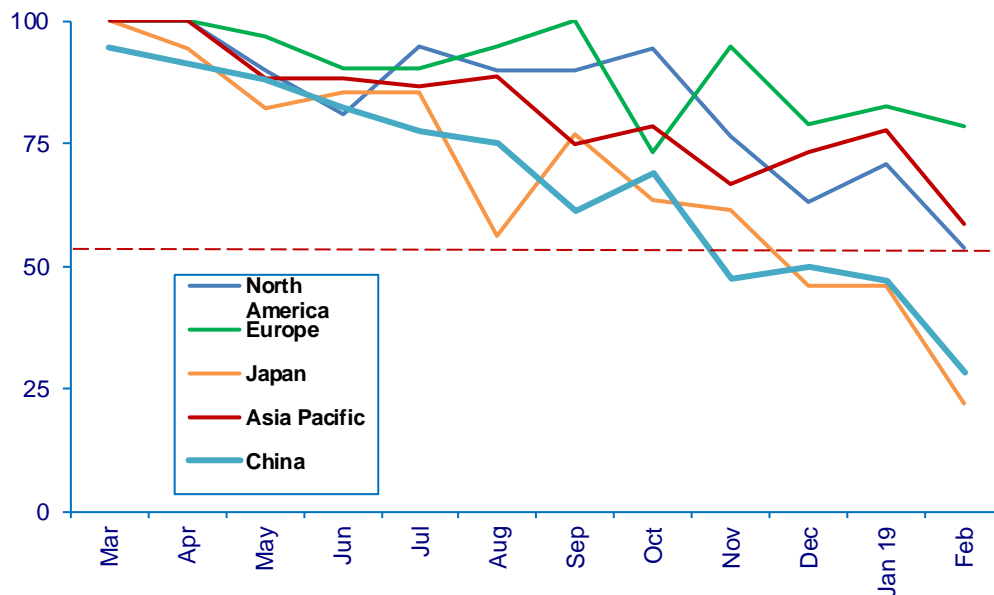
Present Situation Index – 50.7

	Sep	Oct	Nov	Dec	Jan	Feb	Confidence Level	Confidence Trend
North America	90.0	94.4	76.5	63.2	70.8	53.8	+	↓
Europe	100.0	73.3	94.7	78.9	82.6	78.6	+	↓
Japan	76.9	63.6	61.5	46.2	46.2	22.2	-	↓
Asia	75.0	78.6	66.7	73.3	77.8	58.8	+	↓
China	61.2	69.2	47.6	50.0	47.1	28.6	-	↓
World	81.1	77.5	69.3	63.8	67.4	50.7	+	↓
Confidence	+	+	+	+	+	+		
Trend		↓	↓	↓	↑	↓		

All regions dropped in confidence. Japan and China are very low in confidence.

Present Situation Index

>50.0 = Positive



Future Expectations

Industry personnel were asked, "What is your expectation of future business conditions six months from now (positive, negative, or neutral)?"

Future Expectations Index – 61.6

Region	Sep	Oct	Nov	Dec	Jan	Feb	Confidence Level	Confidence Trend
North America	86.7	87.5	64.3	68.8	72.2	62.5	+	↓
Europe	94.1	83.3	81.3	75.0	78.9	62.5	+	↓
Japan	80.0	54.5	54.5	66.7	66.7	57.1	+	↓
Asia	82.4	87.5	72.2	81.3	75.0	70.6	+	↓
China	58.8	71.4	47.1	61.5	60.0	52.9	+	↓
World	79.8	80.3	64.5	71.2	71.4	61.6	+	↓
Confidence	+	+	+	+	+	+		
Trend		↑	↓	↑	↑	↓		

All regions dropped for future business expectations.

Future Expectations Index

(>50.0 = Positive)

