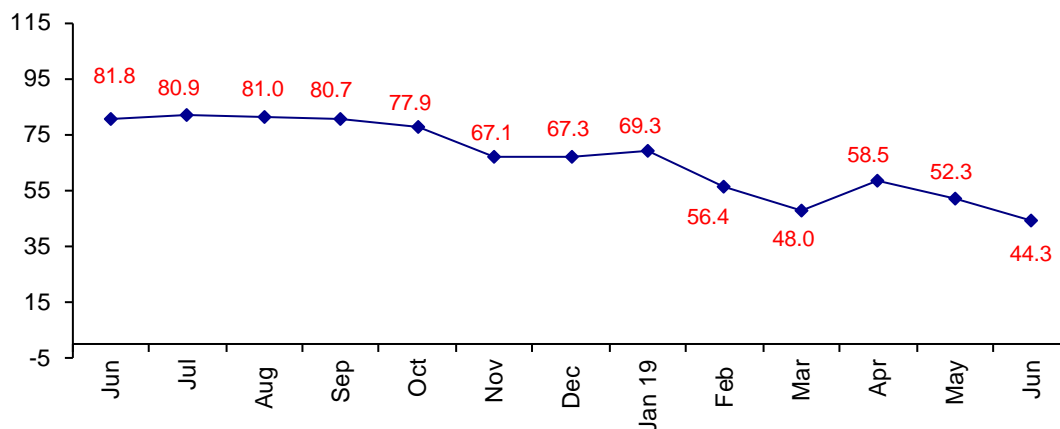


Confidence Drops to Negative for the First Time in Years

The June Confidence Index is 44.3 down from May at 52.3. World GDP slows, connector sales slow and confidence in business conditions drops below 50.0 for the first time in years.

World Connector Confidence Index (WCCI)
>50.0 = Positive



The **World Connector Confidence Index (WCCI)** is the average of all responses for “present situation,” and “future expectations.”

Present Business Expectations

Industry personnel were asked, "What is your appraisal of current business conditions (positive, negative, neutral)?"

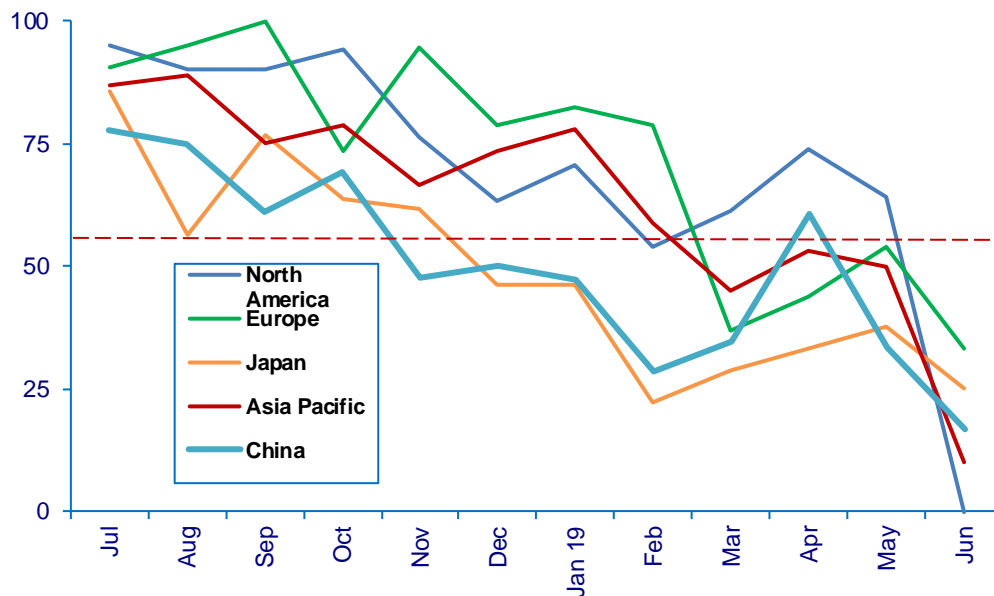
Present Situation Index – 32.8

	Jan	Feb	Mar	Apr	May	Jun	Confidence Level	Confidence Trend
North America	70.8	53.8	61.1	73.7	64.3	62.5	+	↓
Europe	82.6	78.6	36.8	43.8	53.8	33.3	-	↓
Japan	46.2	22.2	28.6	33.3	37.5	25.0	-	↓
Asia	77.8	58.8	45.0	53.3	50.0	10.0	-	↓
China	47.1	28.6	34.8	60.7	33.3	16.7	-	↓
World	67.4	50.7	41.5	54.8	48.4	32.8	-	↓
Confidence	+	+	-	+	-	-		
Trend		↓	↓	↑	↓	↓		

All regions are down and in negative territory except, North America.

Present Situation Index

>50.0 = Positive



Future Expectations

Industry personnel were asked, "What is your expectation of future business conditions six months from now (positive, negative, or neutral)?"

Future Expectations Index – 54.2

Region	Jan	Feb	Mar	Apr	May	Jun	Confidence Level	Confidence Trend
North America	72.2	62.5	60.0	69.6	60.0	63.6	+	↑
Europe	78.9	62.5	50.0	44.4	64.3	66.7	+	↑
Japan	66.7	57.1	53.3	58.3	40.0	44.4	-	↑
Asia	75.0	70.6	58.8	73.7	64.3	53.8	+	↓
China	60.0	52.9	50.0	60.9	44.4	42.9	-	↓
World	71.4	61.6	54.1	62.1	56.1	54.2	+	↓
Confidence	+	+	+	+	+	+		
Trend		↑	↓	↑	↓	↓		

Japan and China are negative about future business conditions.

Future Expectations Index

(>50.0 = Positive)

