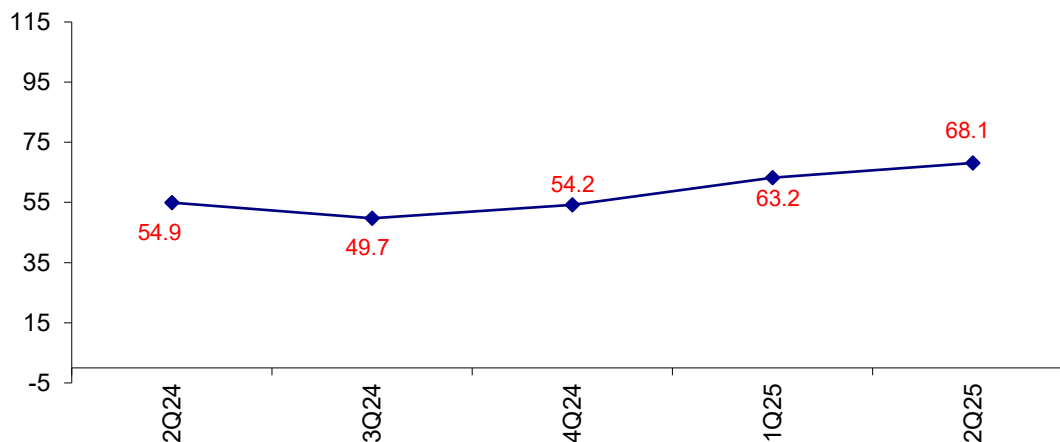


News Brief No 23-2025  
July 23, 2025

## **Business Conditions Positive Except Europe**

The Connector Confidence Index for the 2<sup>nd</sup> quarter is 68.1 up from 63.2 for 1<sup>st</sup> quarter of 2025.

### **World Connector Confidence Index (WCCI) >50.0 = Positive**



The **World Connector Confidence Index (WCCI)** is the average of all responses for “present situation,” and “future expectations.”

No part of this article may be used without the written permission of Bishop & Associates Inc. If you would like to receive additional news about the connector industry, [register here](#). You may also contact us at [bishop@bishopinc.com](mailto:bishop@bishopinc.com) or by calling 630.443.2702.

## Present Business Expectations

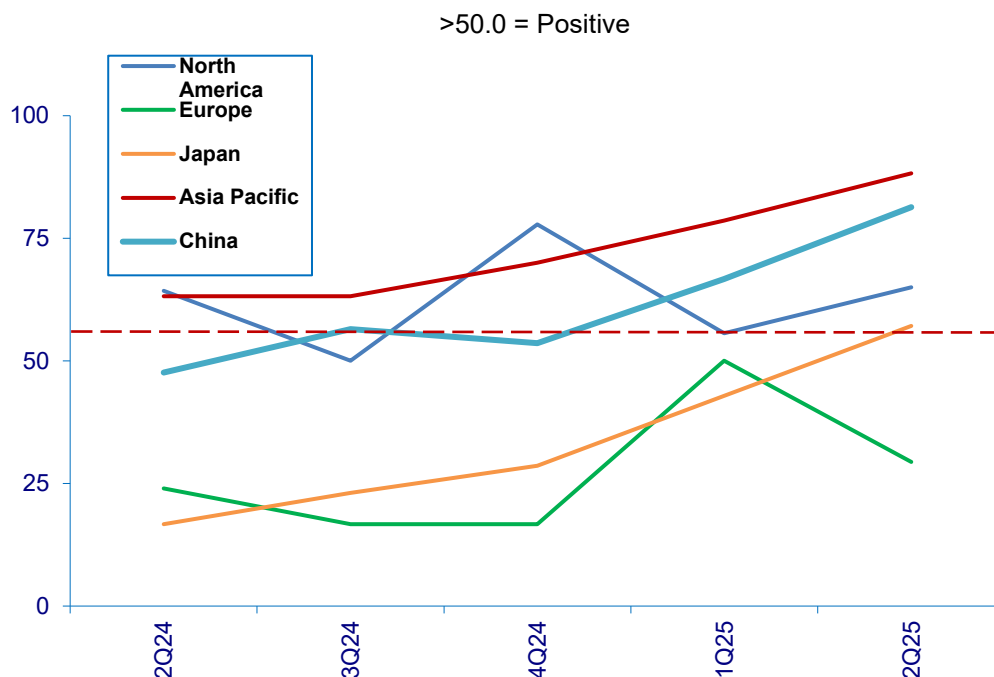
Industry personnel were asked, "What is your appraisal of current business conditions (positive, negative, neutral)?"

### Present Situation Index – 64.3

	2Q24	3Q24	4Q24	1Q25	2Q25	Confidence Level	Confidence Trend
North America	64.3	50.0	77.8	55.6	65.0	+	↑
Europe	24.0	16.7	16.7	50.0	29.4	-	↓
Japan	16.7	23.1	28.6	42.9	57.1	+	↑
Asia	63.2	63.2	70.0	78.6	88.2	+	↑
China	47.6	56.5	53.6	66.7	81.3	+	↑
<b>World</b>	<b>41.2</b>	<b>43.7</b>	<b>44.7</b>	<b>58.4</b>	<b>64.3</b>	<b>+</b>	<b>↑</b>
<b>Confidence</b>	<b>-</b>	<b>-</b>	<b>-</b>	<b>+</b>	<b>+</b>		
<b>Trend</b>		↑	↑	↑	↑		

The present confidence level is positive at 64.3. Europe has dropped dramatically in the 2<sup>nd</sup> quarter.

### Present Situation Index



## Future Expectations

Industry personnel were asked, "What is your expectation of future business conditions six months from now (positive, negative, or neutral)?"

### Future Expectations Index – 72.2

	2Q24	3Q24	4Q24	1Q25	2Q25	Confidence Level	Confidence Trend
North America	81.8	61.5	76.9	62.5	73.7	+	↑
Europe	59.1	37.5	50.0	62.5	46.7	-	↓
Japan	57.1	44.4	57.9	60.0	61.5	+	↑
Asia	84.2	77.8	81.8	81.3	100.0	+	↑
China	57.9	54.5	55.2	73.3	75.0	+	↑
<b>World</b>	<b>68.8</b>	<b>56.5</b>	<b>63.5</b>	<b>67.9</b>	<b>72.2</b>	<b>+</b>	<b>↑</b>
<b>Confidence</b>	<b>+</b>	<b>+</b>	<b>+</b>	<b>+</b>	<b>+</b>		
<b>Trend</b>		↓	↑	↑	↑		

All regions rose in future confidence from last quarter except Europe. Asia is extremely positive about future business conditions.

### Future Expectations Index

(>50.0 = Positive)

